

Bridge to Beach License with Richmond

San Francisco Bay Trail

March 4, 2025 Board of Directors Meeting

Land Acquisition Department | Acquisition, Stewardship, and Development Division

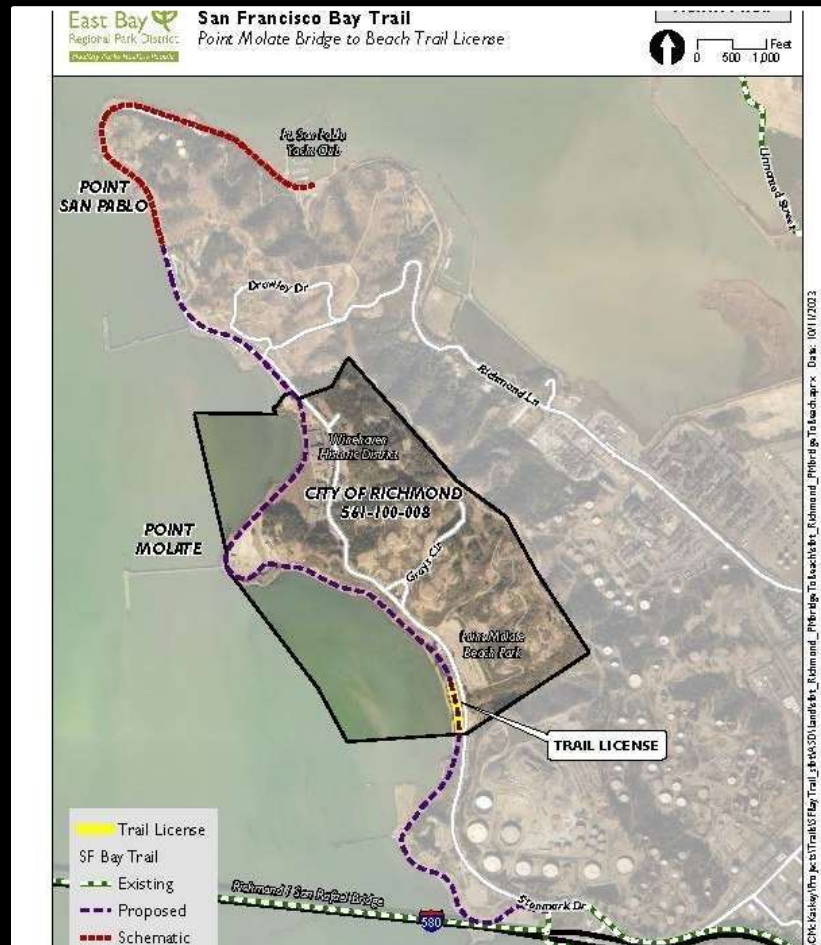


Bridge to Beach License with Richmond

San Francisco Bay Trail

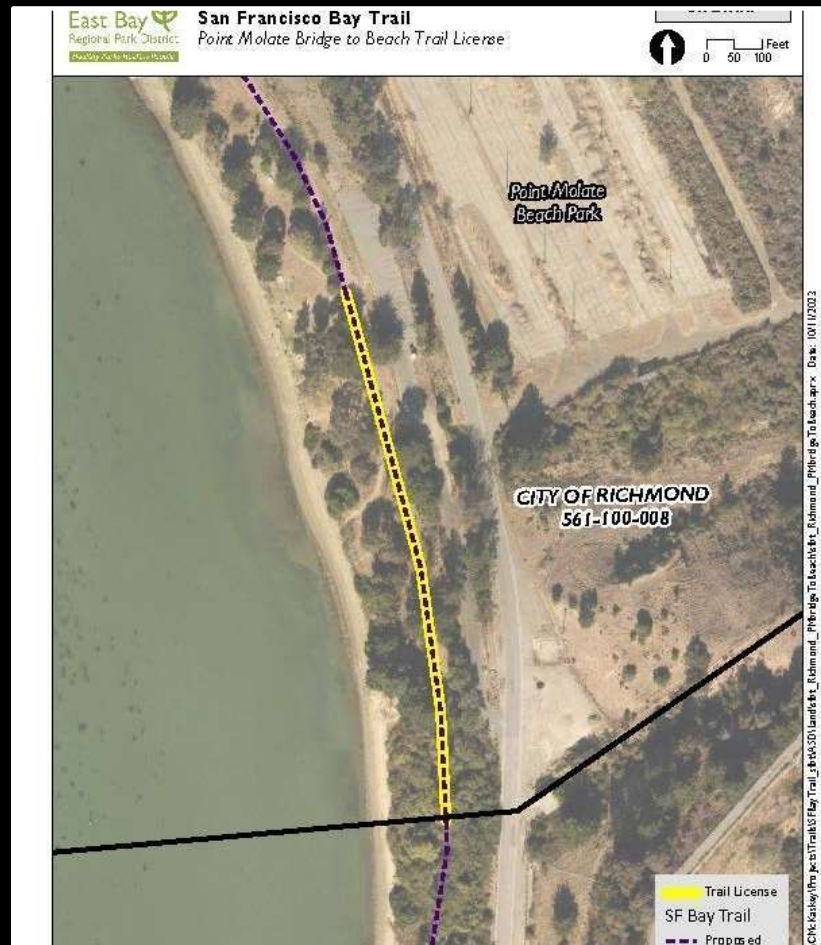
March 4, 2025 Board of Directors Meeting

Land Acquisition Department | Acquisition, Stewardship, and Development Division



San Francisco Bay Trail

Land Acquisition Department | Acquisition, Stewardship, and Development Division



Bridge to Beach License with Richmond

San Francisco Bay Trail

March 4, 2025 Board of Directors Meeting

Land Acquisition Department | Acquisition, Stewardship, and Development Division

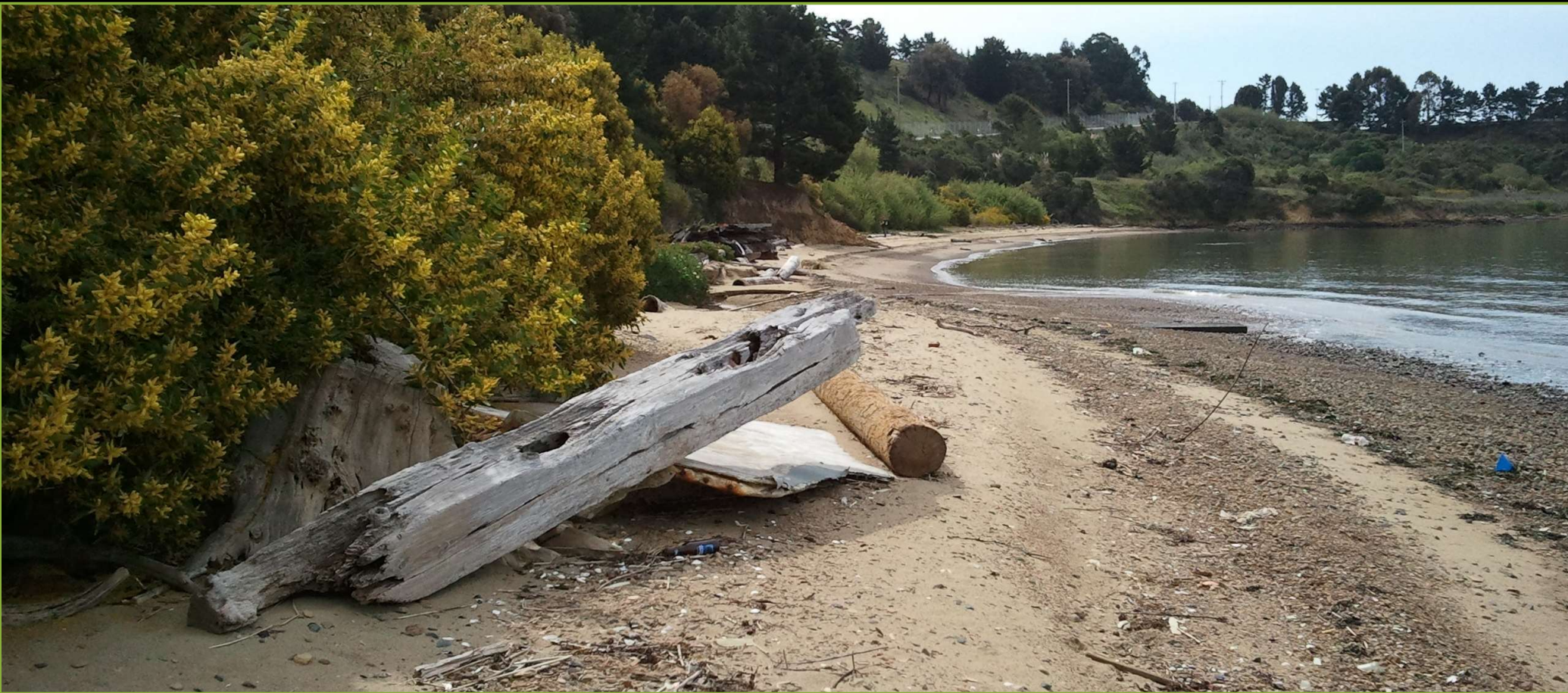


Bridge to Beach License with Richmond

San Francisco Bay Trail

March 4, 2025 Board of Directors Meeting

Land Acquisition Department | Acquisition, Stewardship, and Development Division



Bridge to Beach License with Richmond

San Francisco Bay Trail

March 4, 2025 Board of Directors Meeting

Land Acquisition Department | Acquisition, Stewardship, and Development Division



Bridge to Beach License with Richmond

San Francisco Bay Trail

March 4, 2025 Board of Directors Meeting

Land Acquisition Department | Acquisition, Stewardship, and Development Division



Bridge to Beach License with Richmond

San Francisco Bay Trail

March 4, 2025 Board of Directors Meeting
Land Acquisition Department | Acquisition, Stewardship, and Development Division



Bridge to Beach License

- ☐ Covers a short distance from the Chevron property line to Point Molate Beach Park
- ☐ Includes construction staging area
- ☐ Connects trail ROW south to Richmond-San Rafael Bridge toll plaza
- ☐ License term is for 25 years
- ☐ Construction expected to begin in summer 2025



Bridge to Beach License with Richmond

San Francisco Bay Trail

March 4, 2025 Board of Directors Meeting

Land Acquisition Department | Acquisition, Stewardship, and Development Division



Questions?

