

Special Use Agreements
for
Public Archery Ranges

Redwood Bowman, Inc.
at Roberts Regional
Recreation Area

&

Briones Archers, Inc.
at Briones Regional Park



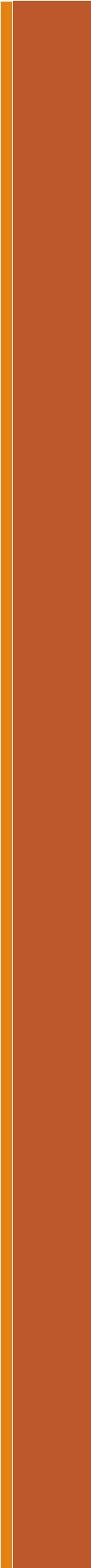
BOARD OPERATIONS COMMITTEE
MARCH 19, 2025

Tiffany Margulici, Business Services Manager

STAFF RECOMMENDATION SUMMARY

Staff recommends that the Board Operations Committee recommend to the full Board execution of Special Use Agreements to maintain and operate public archery ranges:

	REDWOOD BOWMAN, INC.	BRIONES ARCHERS, INC.
Location	Roberts Regional Recreation Area	Briones Regional Park
Annual Fee	\$1,200	\$1200
Recommended Term Length	5 years with 5-year option	5 years with 5-year option
Term End	12/31/2035	4/6/2035
Approx Acreage	26 acres	30.5 acres
Estimated Members	100	50



PRESENTATION OVERVIEW

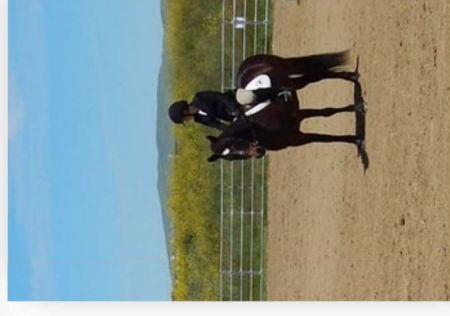
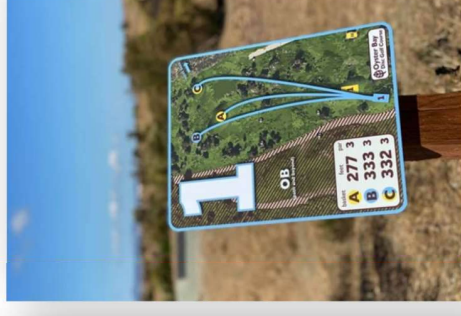
- Special Use Agreements
- Policy Framework
- Backgrounds
- Annual Payment
- Locations
- Staff Recommendations (x2)



SPECIAL USE REVIEW PROCESS BOARD OPERATING GUIDELINES

Reviewed by the Board Operations Committee and then recommended to the full Board of Directors for approval

Currently 28 Special Use Agreements



SPECIAL USE REVIEW PROCESS

(RESOLUTION 1994-10-262)

Special Use Agreements

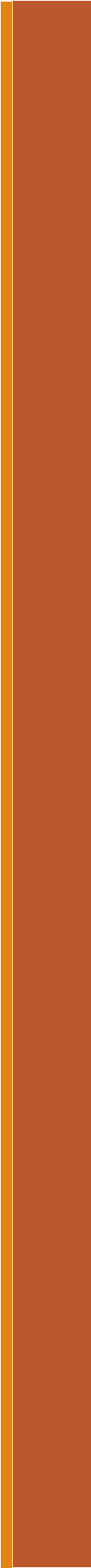
- Must meet the “District objectives, with appropriate public benefit and priority”
- Defined as any on-going recreational development, activity, service, or land use that is provided for group and general public benefit
- Provided by clubs, associations, or similar non-profit entities
- Use is either exclusive to a geographic area and/or allows a use otherwise not allowed under Ordinance 38
- Membership must be open to the public

SPECIAL USE - ELEMENTS OF FEE STRUCTURE

HIGHER FEES	LOWER FEES
Exclusive Use	
Use is otherwise not allowed	
Onsite Building/Major Infrastructure	
Overall Size of Use Area	
Onsite Storage	No Onsite Storage
Vehicle Access beyond Public Access	No Vehicle Access
Parks in Non-Public Area	Parks in Public Area
	Significant Maintenance Responsibilities
	District Staff Involvement Insignificant

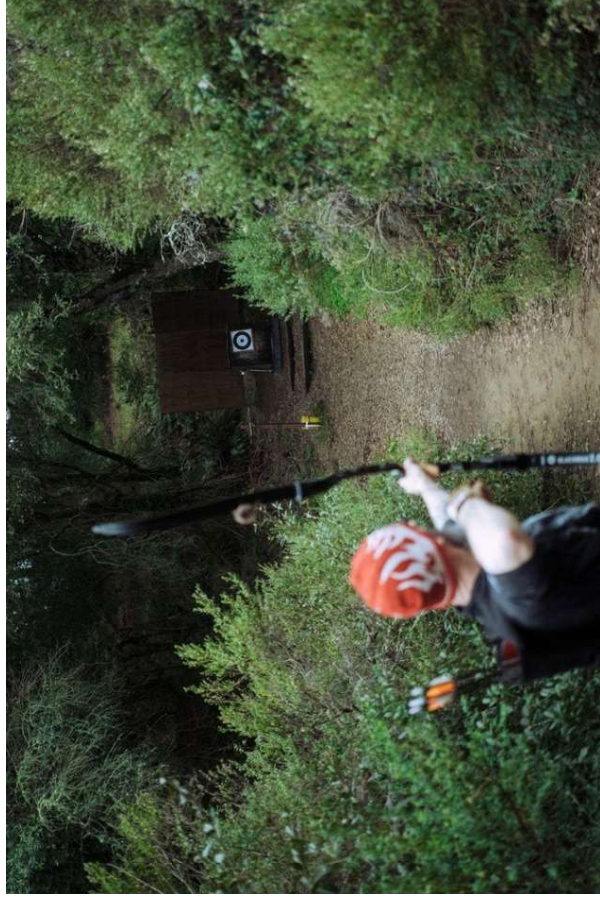
28 Special Use Agreements Fees Breakdown

2 -	District Pays (both located at Ardenwood)
4 -	\$0 Fee
9 -	<\$1,000/year
8 -	\$1,000-\$2000/year
5 -	\$2,000/year or more



ARCHERY AS A SPECIAL USE

- Park District Ordinance 38 Section 403.2 allows the Board to designate areas for use of bows and arrows, which are otherwise generally prohibited throughout the Park District.
- Long-standing Archery Ranges at Briones and Roberts.
- Occasional archery as part of the Little Hills Event Concession Agreement



BACKGROUND

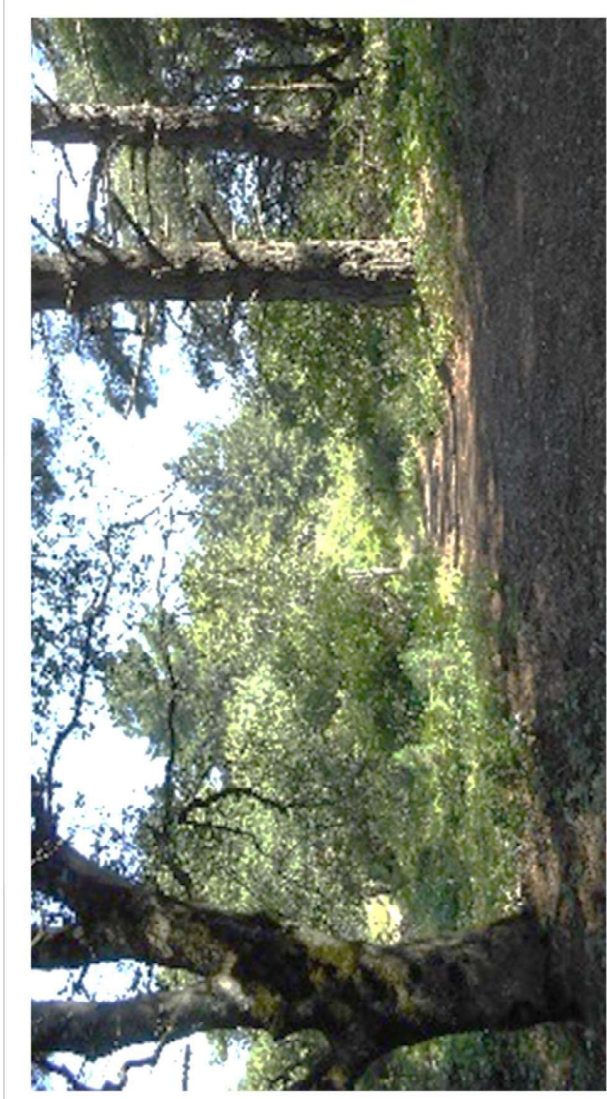
Briones Archers, Inc. and Redwood Bowman, Inc.

- Agreements with the District since 1970's
- Nonprofit volunteer organizations
- Ranges are FREE and open to the public
- National Field Archery Association standards
- Both Clubs maintain their entire sites and have additional storage containers for equipment
- Significant in-kind labor provided by the club
- Park staff report that they have utilized the facility cooperatively and responsively.

BACKGROUND

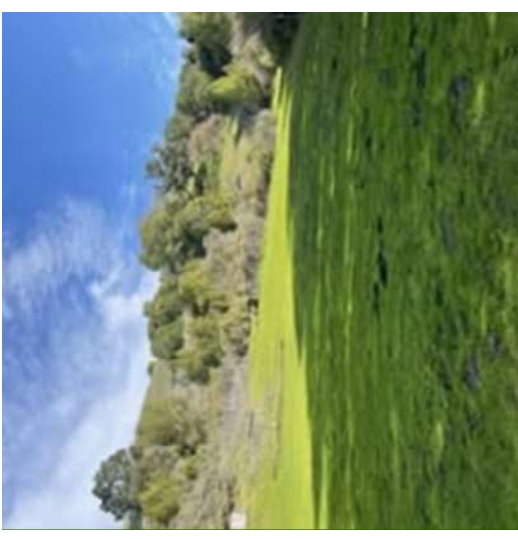
Briones Archers, Inc. and Redwood Bowman, Inc.

- Clubs hold shoots at the range about once a month as well as work parties
- Clubs are required to obtain a Park District Special Event Permit for larger events
- Clubs supplies all the targets, target bales, and other equipment needed on the range

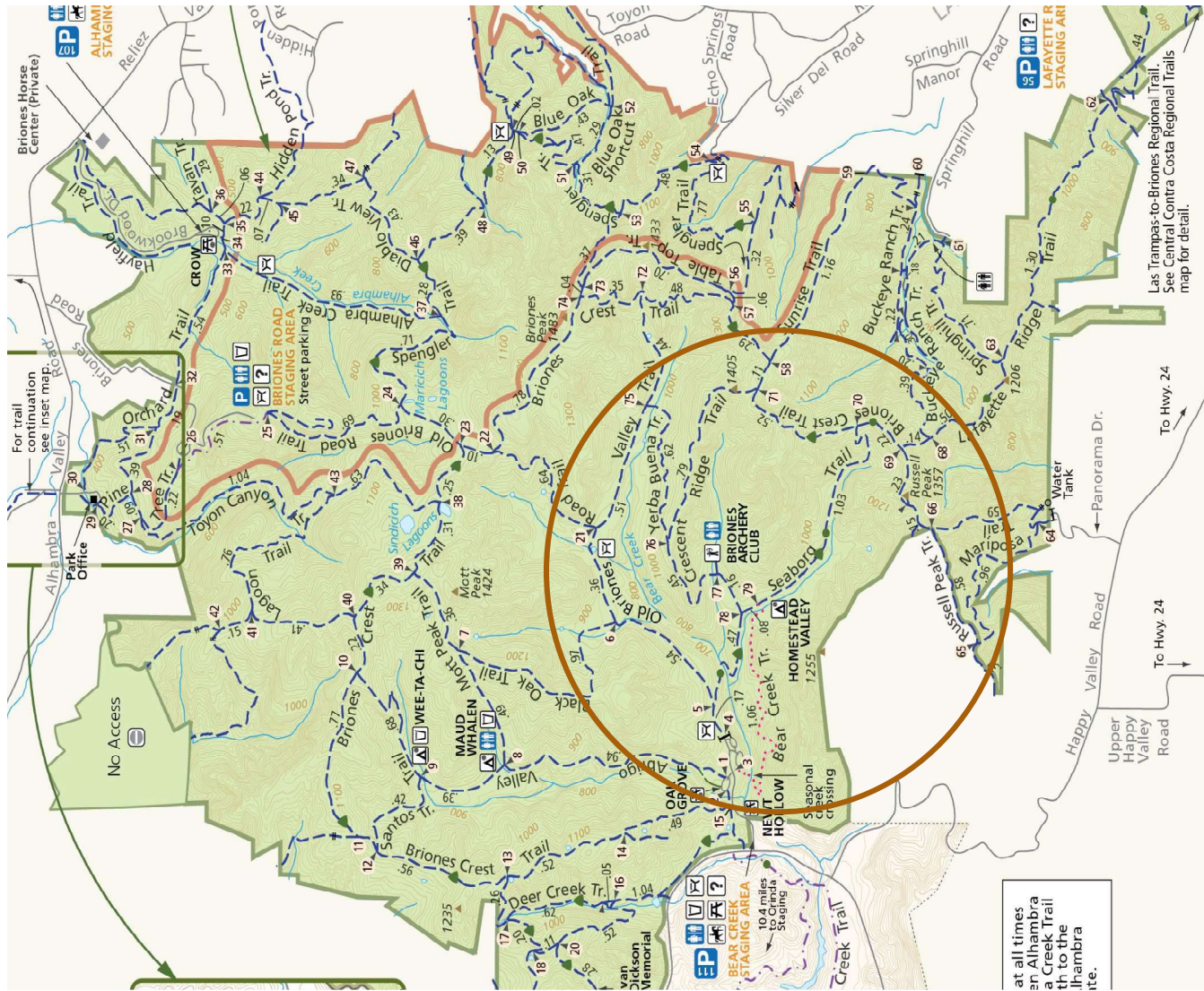




BRIONES ARCHERS, INC.



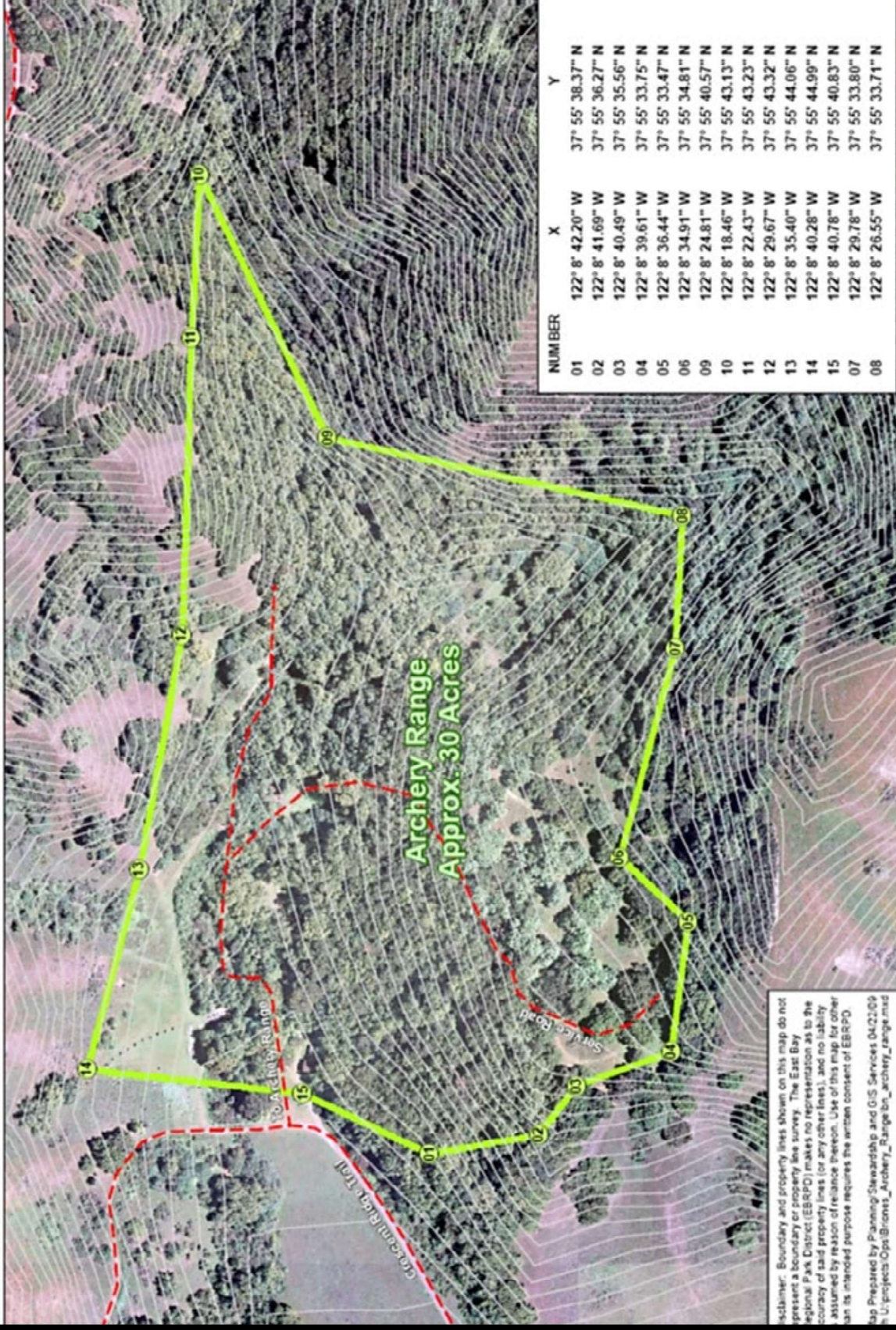
The Briones Archers archery range is accessible off the Seaborg/Crescent Ridge Trail approximately three quarters of a mile east from Briones' west-side Bear Creek Road entrance.





Briones Archery Range East Bay Regional Park District

1:3,000 1 inch = 250 Feet
0 100 200 400 Feet
District Trails
10' Contours
Archery Range

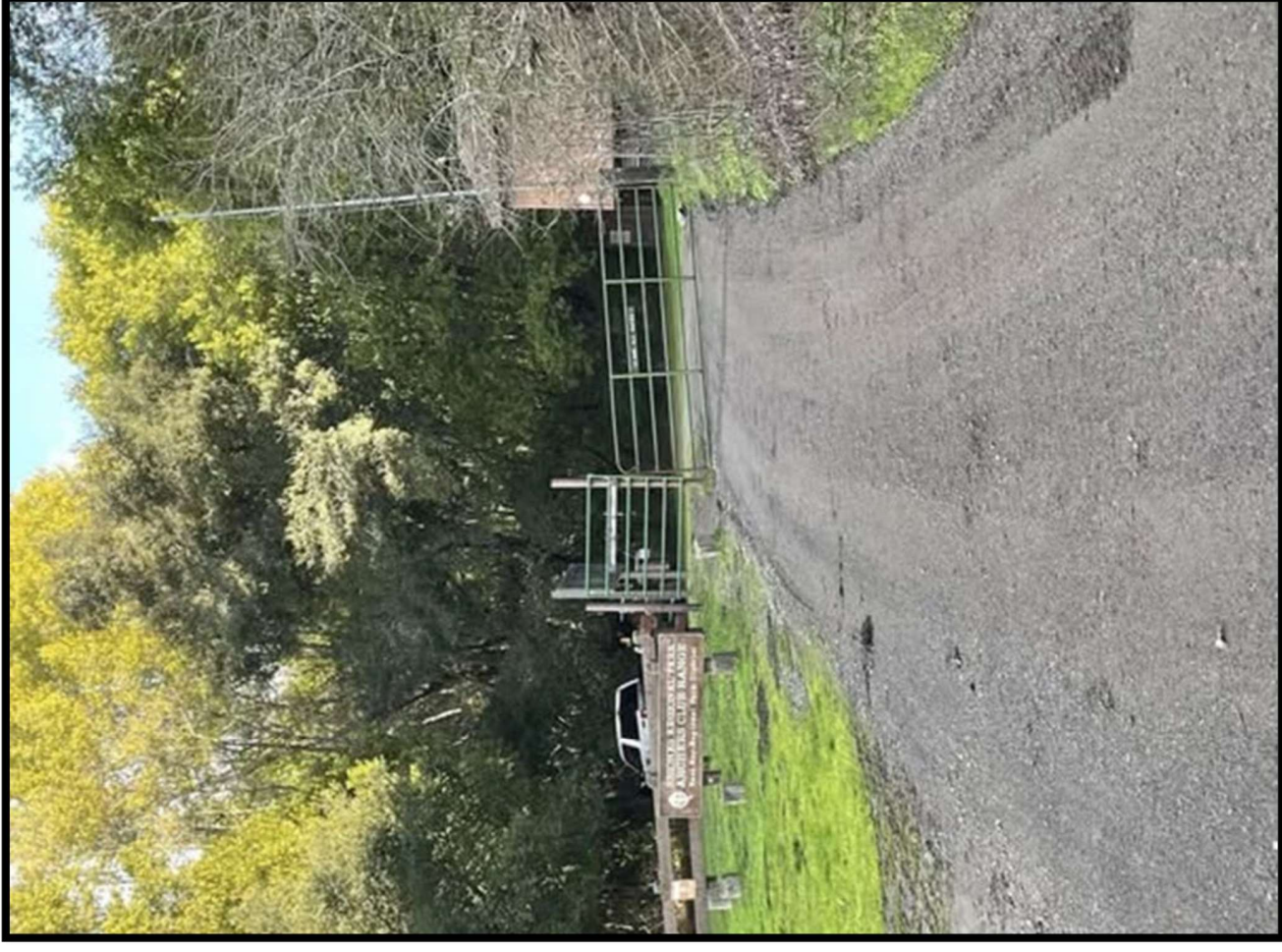


Satellite view Briones Location

BACKGROUND

BRIONES ARCHERS

- Current agreement ends April 6, 2025.
- 30.5 acres and consists a “static” (practice) range in addition to 3 separate 14-target field rounds in a wilderness setting.



East Bay
Regional Park District

BRIONES ARCHERS

- Club members pay an annual membership fee of \$100
- Club currently has approximately 50 members
- New applicants are required to complete at least four club maintenance days (16 hours minimum) within a one-year period
- The Club wishes to continue their agreement and park staff report that they have utilized the facility cooperatively and responsively



REDWOOD BOWMAN, INC. ROBERTS REGIONAL RECREATION AREA





ROBERTS - LOCATION



BIRDS EYE VIEW OF THE ARCHERY RANGE AND CHABOT SCIENCE CENTER

REDWOOD BOWMAN OCCUPYING APPROXIMATELY 26 ACRES



Upper & Lower Course Map

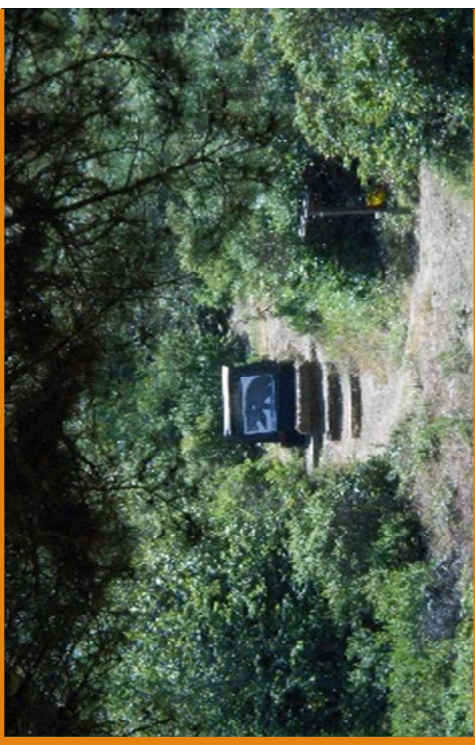
Archery & Archery Equipment Only

- No Smoking
- No Alcohol
- No Guns, BB Guns, Crossbows, Thrown Weapons or Broadheads
- No Hiking, Jogging, or Offroad Dogs
- No Handphones or Loud Music

BACKGROUND

REDWOOD BOWMAN

- Current agreement ends December 31, 2025.
- Range is open to the public and is slightly over 26 acres
- The Club built and owns the clubhouse
- Club built the Ranges and maintains them with help from the Park District for mowing and pump out sewer service of two portable restrooms



BACKGROUND

REDWOOD BOWMAN

- Redwood Bowmen (Club) provides lessons through the Recreation Services Unit as well as offering instruction to Veterans, Scouts, and other groups
- Day camp groups and the general public use the ranges on a daily basis



REDWOOD BOWMAN

- Club members pay an annual membership fee of \$110 and \$125 for a family.
- New applicants are required to participate in one regular Club meeting, one work party, a regular Club shoot and pay an initiation fee of \$50
- Club currently has 100 members
- The Club wishes to continue their relationship with the Park District under similar terms and conditions of the 2015 SUA





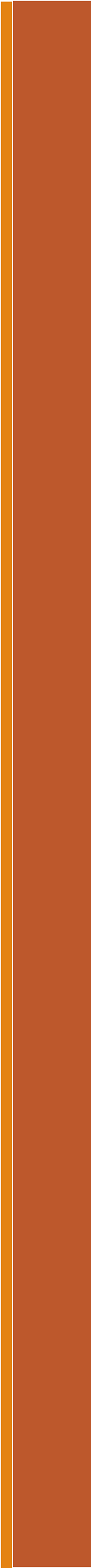
PAYMENT

Clubs will continue to pay \$1,200 annually for a License Fee.

STAFF RECOMMENDATION SUMMARY

Staff recommends that the Board Operations Committee recommend to the full Board execution of Special Use Agreements to maintain and operate public archery ranges:

	REDWOOD BOWMAN, INC.	BRIONES ARCHERS, INC.
Location	Roberts Regional Recreation Area	Briones Regional Park
Annual Fee	\$1,200	\$1,200
Recommended Term Length	5 years with 5-year option	5 years with 5-year option
Term End	12/31/2035	4/6/2035
Approx. Acreage	26 acres	30.5 acres
Estimated Members	100	50





STAFF RECOMMENDATION

Staff recommends that the Board Operations Committee review this report and direct staff to prepare the information for acceptance by the Board of Directors the execution of a Special Use Agreement with the Redwood Bowmen Association, Inc., a non-profit corporation, for a five-year term beginning on April 7, 2025 with a 5-year renewal to be agreed by both parties for a license which will allow the club use of land at Roberts Regional Recreation Area to continue to operate and maintain the existing public archery range with an annual payment of \$1,200.





STAFF RECOMMENDATION

Staff recommends that the Board Operations Committee review this report and direct staff to prepare the information for acceptance by the Board of Directors the execution of a Special Use Agreement with the Briones Archers, Inc., a non-profit corporation, for a five-year term beginning on April 7, 2025 with a 5-year renewal to be agreed by both parties for a license which will allow the club use of land at Briones Regional Park to continue to operate and maintain the existing public archery range with an annual payment of \$1,200.



QUESTIONS?

