

LIGHTING AND LANDSCAPING ASSESSMENT

Two County Trails (ACC-I) and Six Zones of Benefit (ZOB)
FY 2025-2026

ACTION PLAN FOR TODAY

(1) Public Hearing and Report Approval

- Receive public comments regarding Engineer's Report
- Approve Engineer's Report for FY 2025-2026

(2) Assessment Confirmation & Levy Authorization

- Adopt resolution confirming diagram and assessment
- Order maintenance and improvements
- Levy the ACC-I annual assessment for FY 2025-2026

ACTION PLAN FOR TODAY

(3) Funding Appropriations Approval

- \$50,000 – Five Canyons Zone of Benefit
- \$20,000 – Sibley Volcanic Zone of Benefit

(4) Adopt Resolution Overruling Protests

- Only if protests are filed

ACC-I LLD – AT A GLANCE

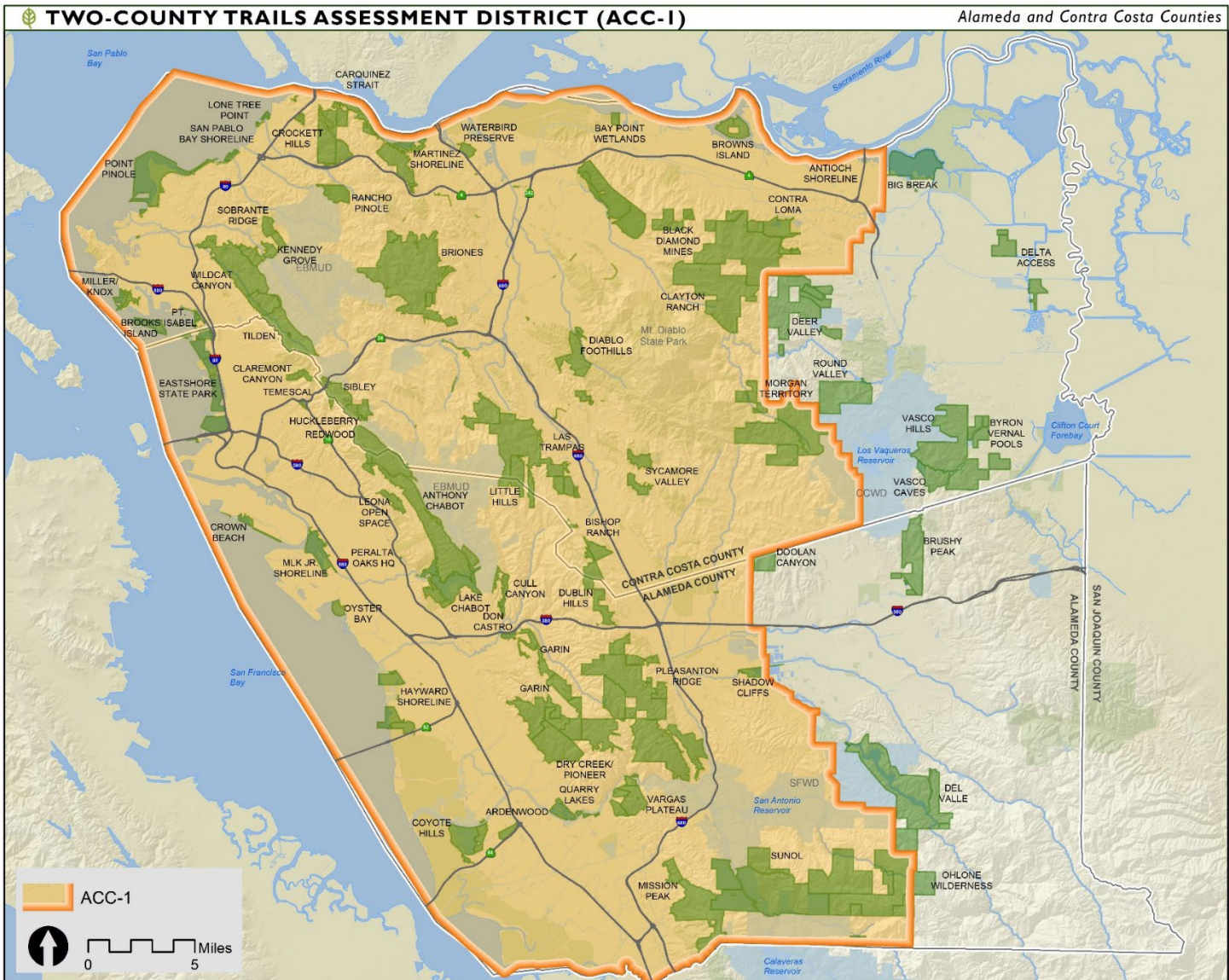
- Formed in **1993** to support maintenance of the growing regional trail system in Alameda and Contra Costa Counties
- Established after Measure AA to address expanding trail infrastructure needs
- Assessment unchanged since inception:
 - **\$5.44** per single-family parcel
 - **\$2.72** per unit for multi-unit parcels (added in 1995)
- Reaffirmed by voters in 1996 with **78.5% approval** under Proposition 218

ACC-I LLD – ASSESSMENT OVERVIEW

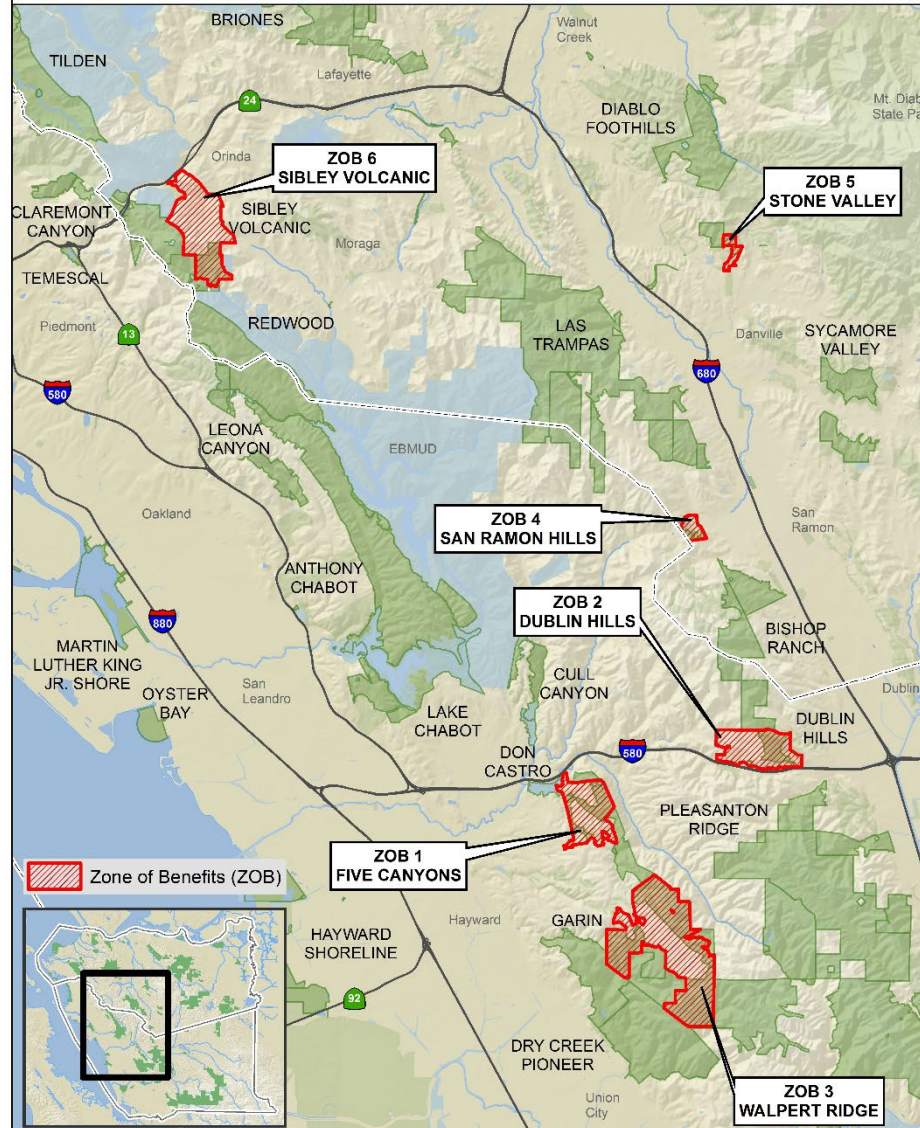
- **Coverage:** Applies throughout both counties, **except** for:
 - Murray Township (Eastern Alameda County)
 - Liberty Union High School District (Eastern Contra Costa County)
- **Exemptions:** Public utility and church-owned properties
- **Senior Discount Program:** Seniors with annual income below the poverty level are entitled to a 50% assessment reduction

ACC-I LLD – ASSESSMENT OVERVIEW

- **Use of Funds:** Supports the maintenance, improvement, and servicing of parklands, trails, and related access, including:
 - Both existing and future paved/unpaved trails in Park District lands
 - Regional trails outlined in the current Master Plan
- **Staffing Impact:** Helps fund ~34 full-time staff, including:
 - Roads & Trails Crew
 - Alameda County Trails Crew
 - Contra Costa Trails Crew



O:\GIS\CMcKasey\Projects_2018\Financials\ACC1\ACC.mxd Date: 6/28/2018



C:\GIS\CM\Projects\2018\Finance\ZOB\ERPD_DistrictZones_Bpdx11.mxd Date: 6/29/2018

SIX ZONES OF BENEFIT

- Established in the late 1990s and early 2000s as part of a **mitigation strategy** for housing developments
- Parklands and trails were dedicated in each ZOB, with ongoing **maintenance managed by the Park District**
- ZOB assessment rates are **adjusted annually** based on the Consumer Price Index (CPI)

ZONES OF BENEFIT

Rates & Number of Assessable Units FY25-26

FIVE CANYONS (ZB-1)

1,089 parcels | \$59.08/unit

SAN RAMON HILLS (ZB-4)

140 parcels | \$53.45/unit

DUBLIN HILLS (ZB-2)

663 parcels | \$42.76/unit

STONE VALLEY (ZB-5)

39 parcels | \$222.41/unit

WALPERT RIDGE (ZB-3)

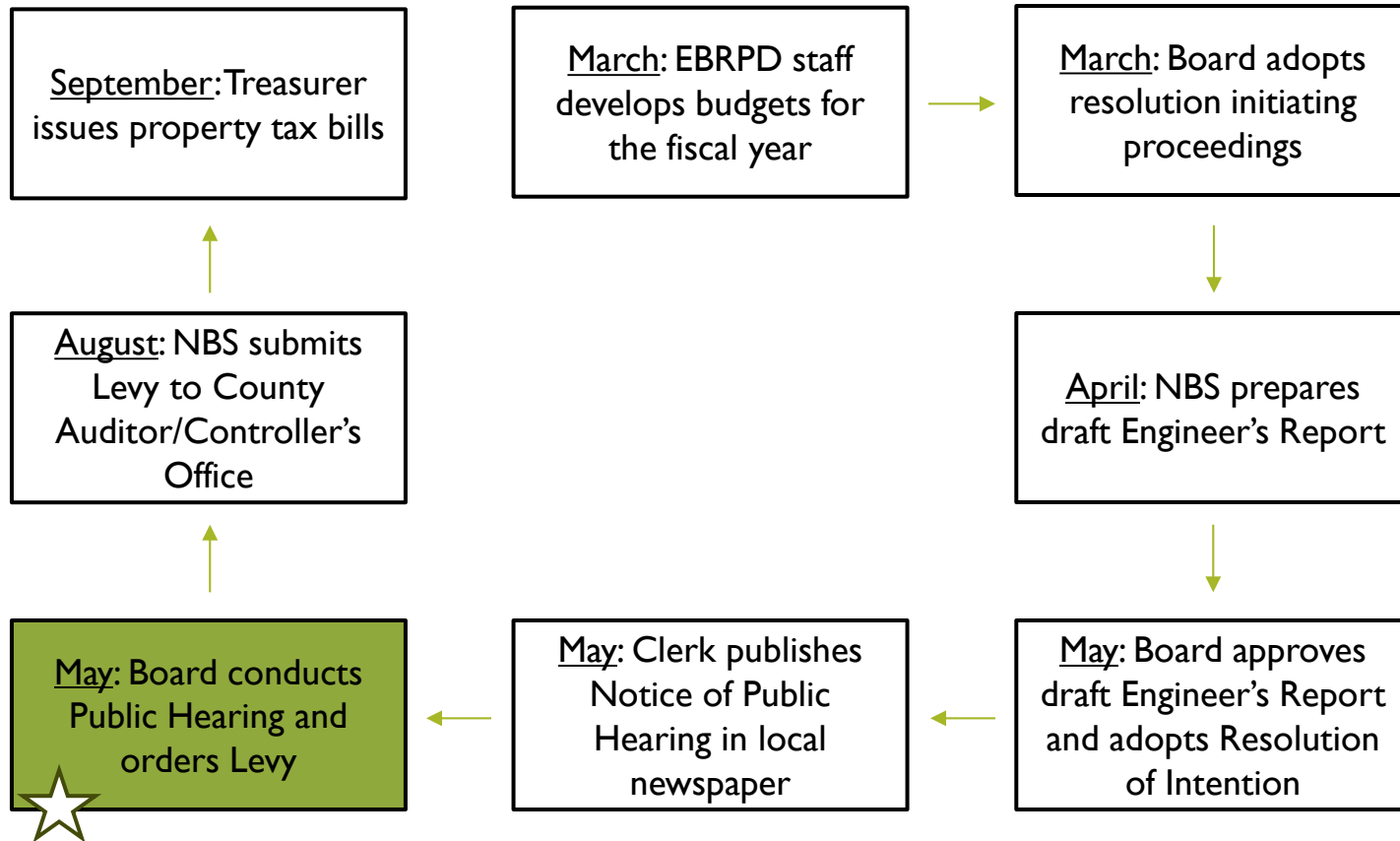
765 parcels | \$190.66/unit

SIBLEY VOLCANIC (ZB-6)

245 parcels | \$132.31/unit

ANNUAL APPROVAL PROCESS

ACC-I & ZOBs



SUMMARY OF ASSESSMENTS

Zone	FY25-26 Proposed Assessment
ACC-I (General Zone)	\$4,506,108.40
Five Canyons (ZB-1)	\$64,338.12
Dublin Hills (ZB-2)	\$28,349.88
Walpert Ridge (ZB-3)	\$145,854.90
San Ramon Hills (ZB-4)	\$7,481.60
Stone Valley (ZB-5)	\$8,673.60
Sibley Volcanic (ZB-6)	\$32,413.50
Total	\$4,793,220

SUMMARY OF ACTION PLAN

- (1) Public Hearing and Report Approval
- (2) Assessment Confirmation & Levy Authorization
- (3) Funding Appropriations Approval
- (4) Adopt Resolution Overruling Protests *(if needed)*

QUESTIONS/COMMENTS?

Thank you!