

# Conservation as Recreation: *A Unified Vision for an Equitable and Thriving Second Century*

October 28, 2024

Park Advisory Committee

Tammy Lim and Natalie Reeder, Stewardship Wildlife Unit



# A Unified Mission

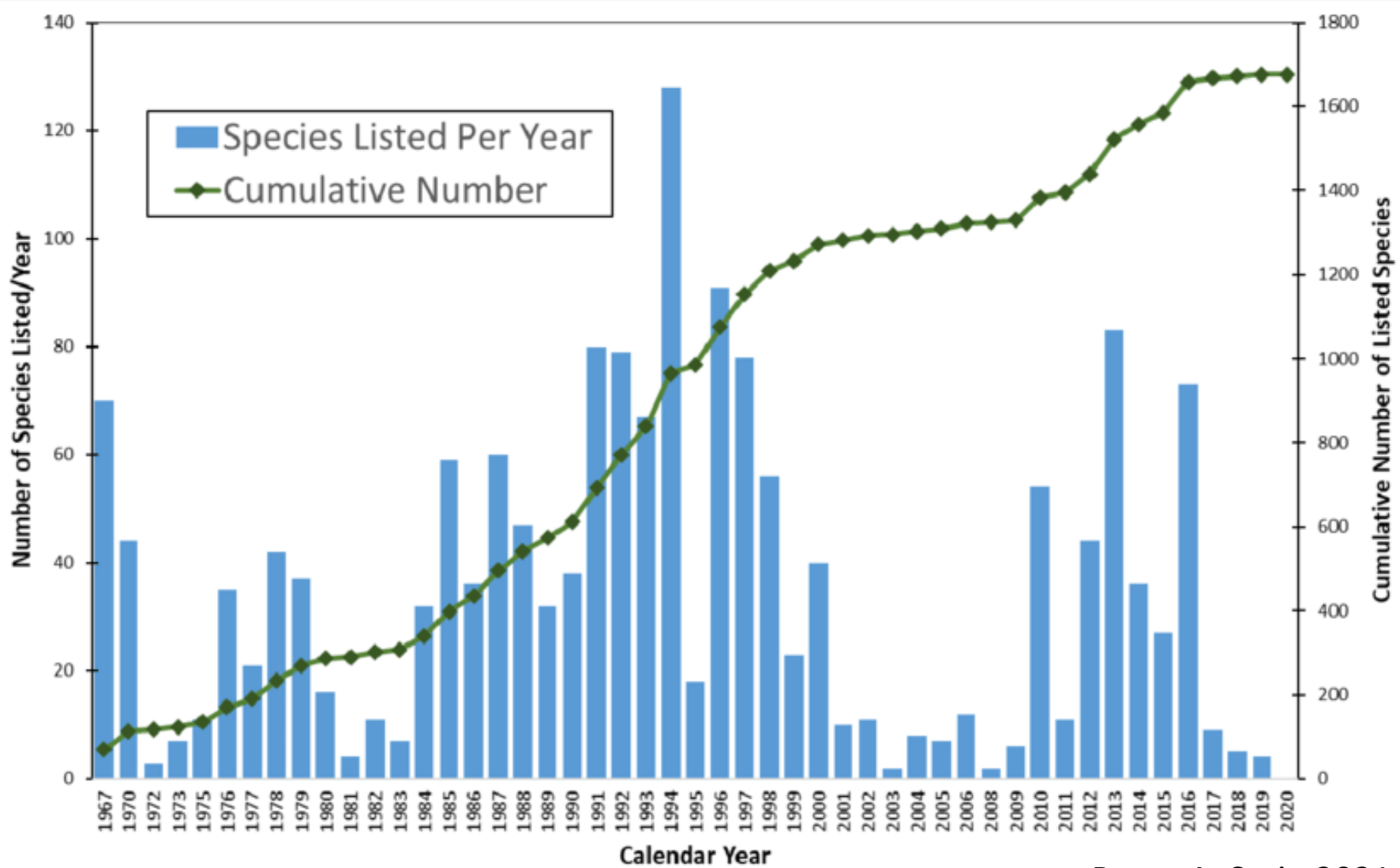
*EBRPD... “preserves a rich heritage of natural and cultural resources and provides open space, parks, trails, safe and healthful recreation and environmental education. An environmental ethic guides the District in all of its activities.”*







# Endangered Species



Bruce A. Stein 2021



# Endangered Species

Calherps.com, Western Spadefoot Toad



© Patrick Briggs



Western Burrowing Owl, Mary Malec



Crotch's bumblebee, Xerces



Western Pond Turtle



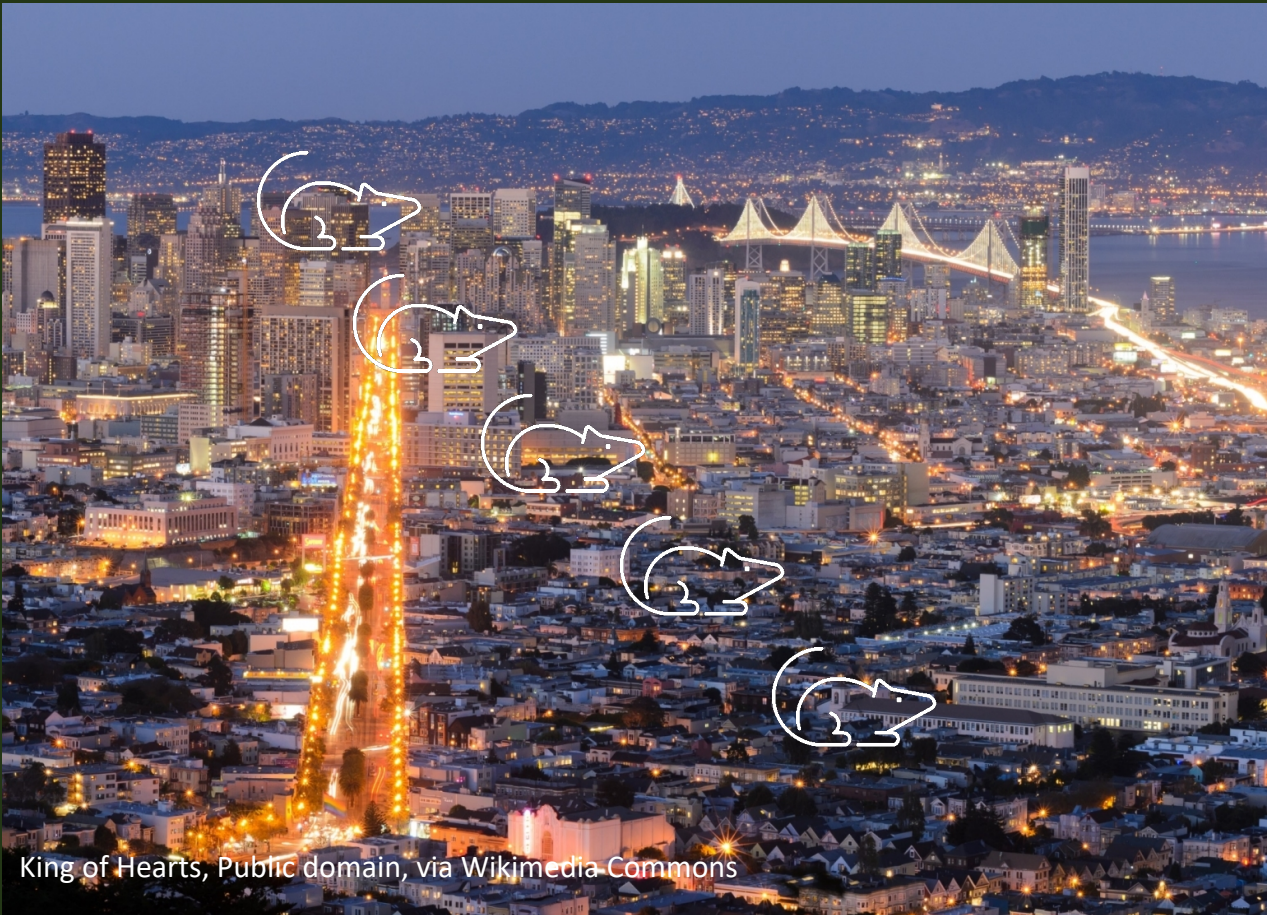
Foothill yellow-legged frog



Mountain lion cubs, Pleasanton Ridge RP

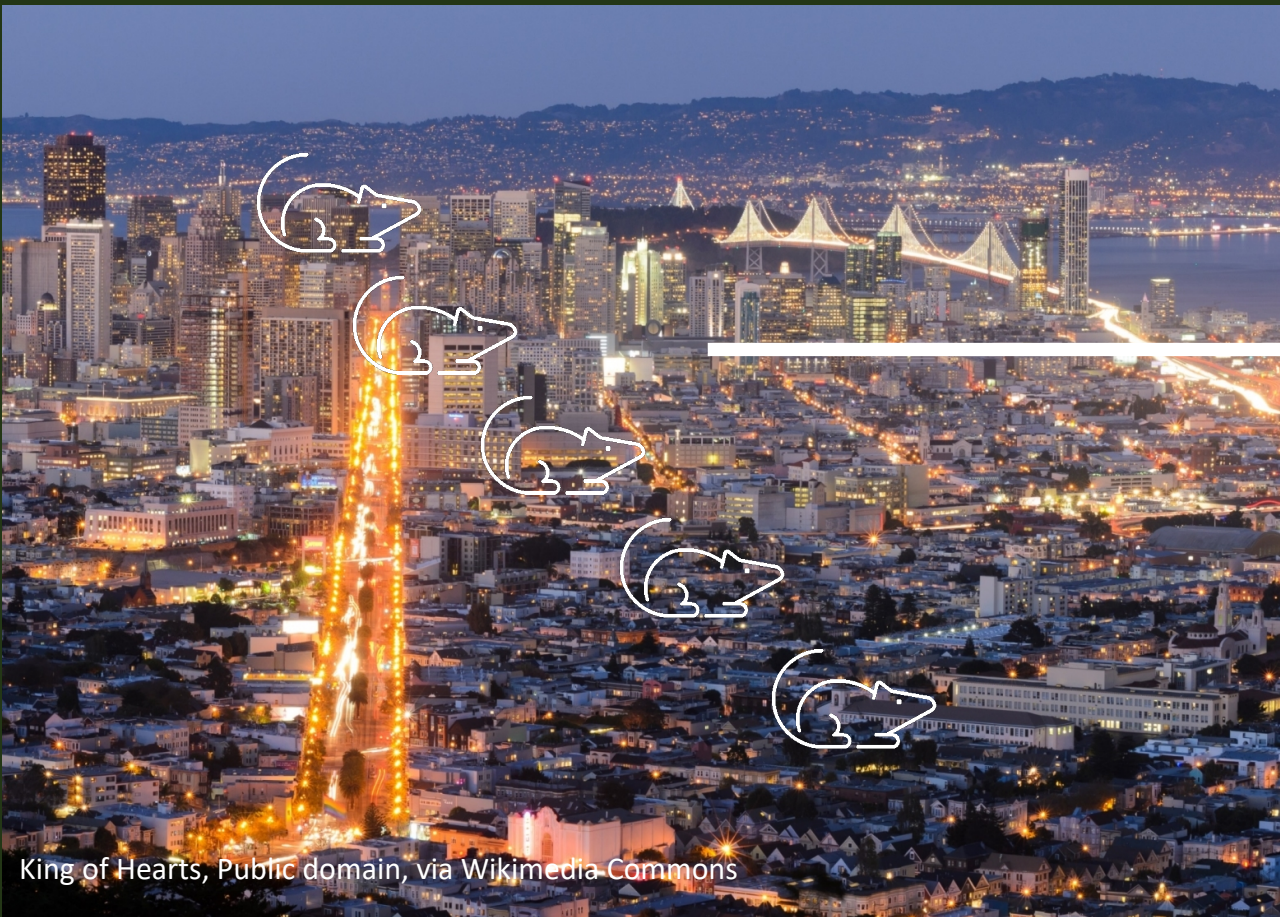


# Urban vs. Wild





# Urban *is* Wild



King of Hearts, Public domain, via Wikimedia Commons



Carol M. Highsmith, Public domain, via Wikimedia Commons



# A Continuum

---





# Urban Ecology







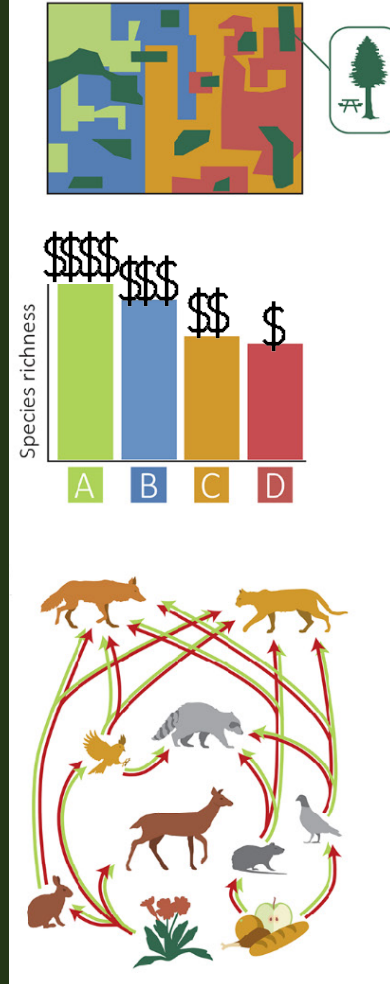
# An Equity Issue

## More Equitable City

Green space more evenly spread

More species in all areas

More intact and functional ecosystems for all!

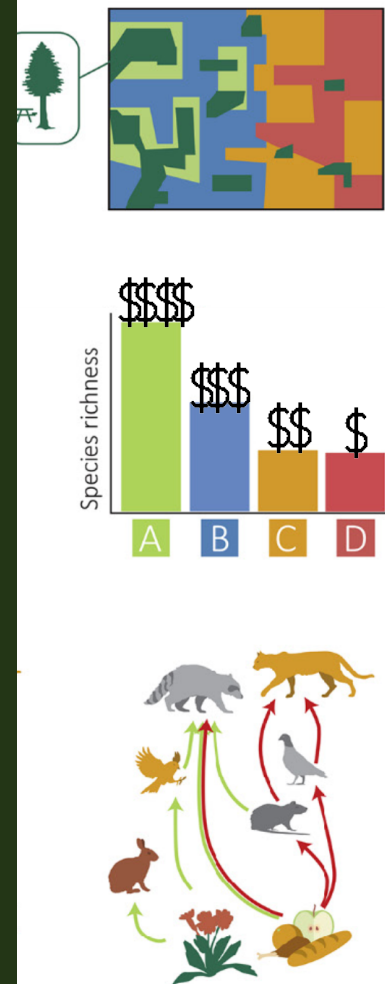


## Less Equitable City

Green space mostly in affluent neighborhoods

Fewer species in lower income areas

Degraded/less functional ecosystems for all

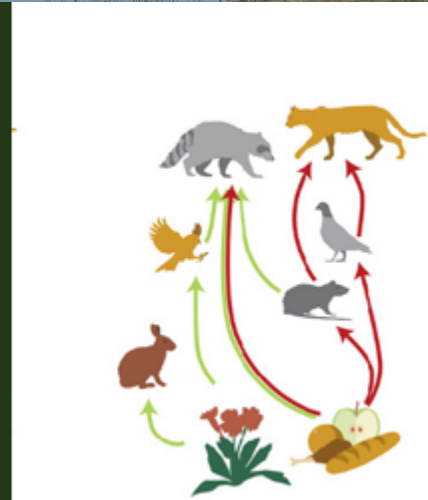
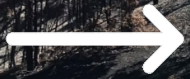




# Park Restoration



2022



2024



to invest in our area, and so I try to let my more optimistic self imagine the possibilities the future holds for this portion of parkland.... we, out here in our little community at the edge of the county, **have a reason to be hopeful.**”— Lindsey Pannell, *Crockett Signal*





## A Continuum



Disturbance

Noise

Dogs

Presence

## Core Conservation Areas

Wildcat Canyon

Tilden Nature Area

Trail Density

Value



Protect what's  
left to preserve  
the rest



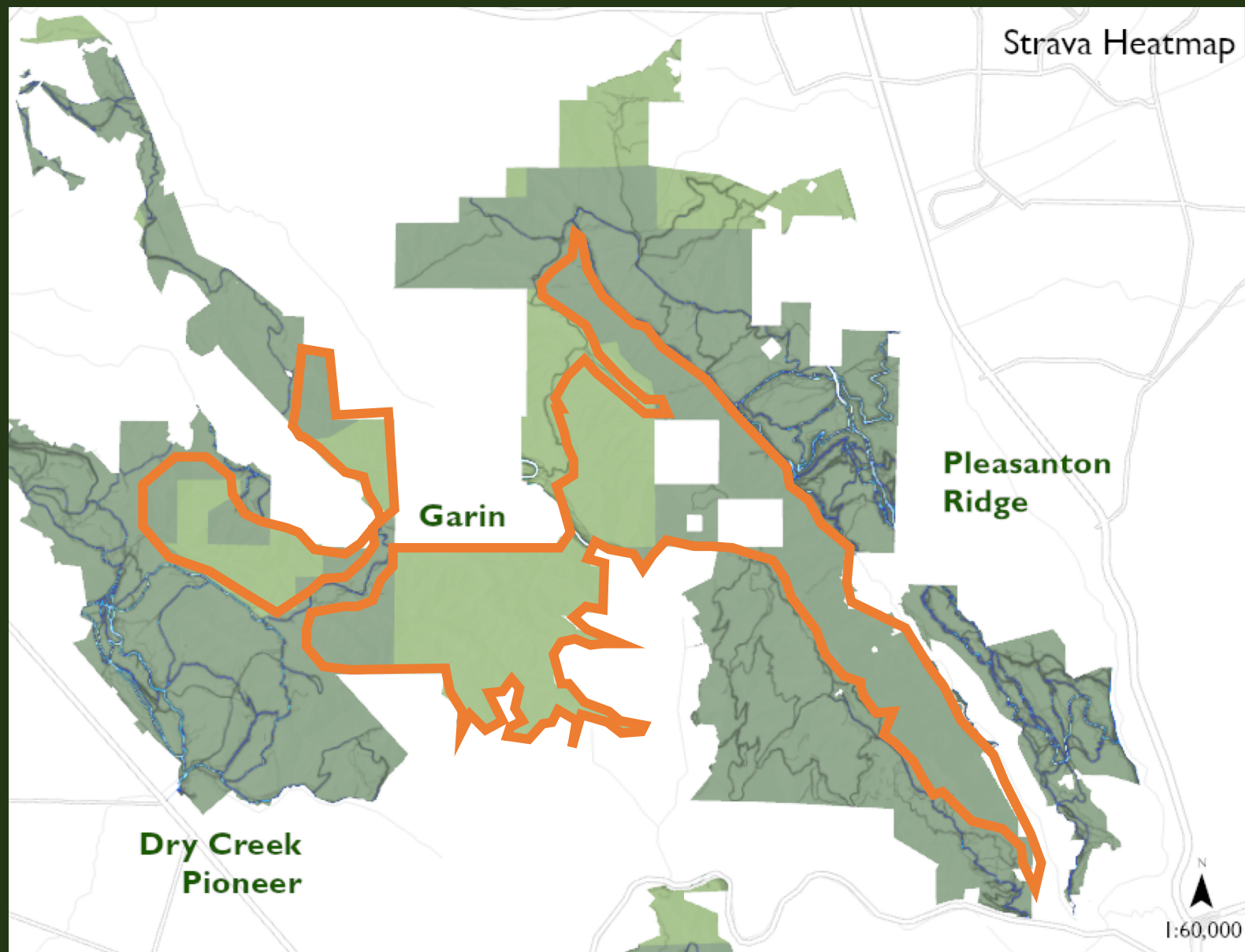


# Core Conservation Areas

Connectivity

Sanctuary

Insurance





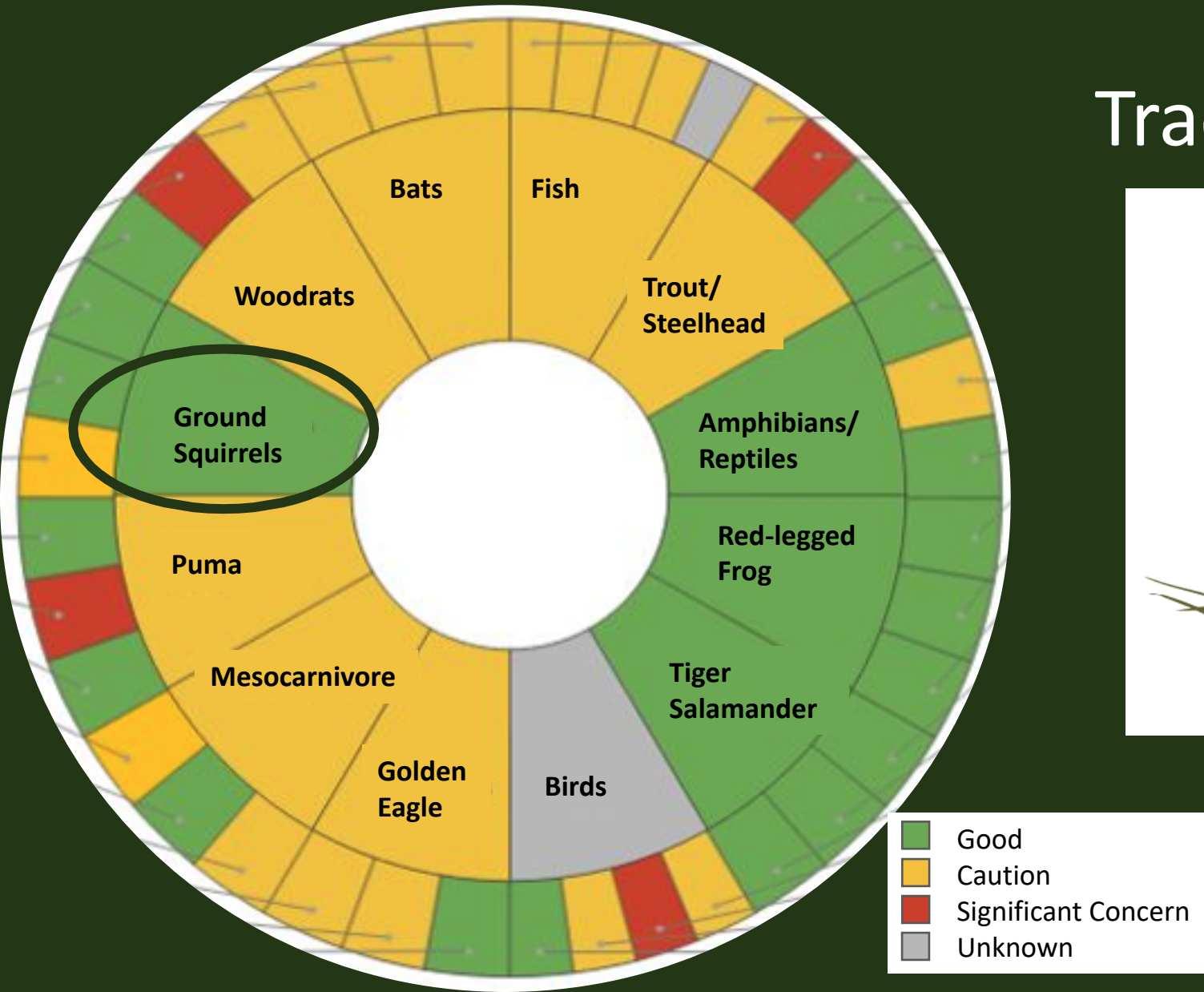
# How? - Partnerships





# How? – Science-Based Management

Track, Assess, Respond





# How? Conservation *is* Recreation

**iNaturalist**

**1.1 million** observations  
47k people, 13k+ species

**eBird**

Over **6 million** observations!





# How? – Community Engagement



## Community Science

- Fill in data gaps (inverts!)
- Promote use of iNaturalist (RPF grant)
- Education and fun!



## Environmental Ethic

- Inform on living with wildlife
- Lead by example - tread lightly
- Understanding why closed conservation areas are needed

## Engaged Restoration

- Identify restoration projects places people love
- Bring back the plants and wildlife that are everyone's natural heritage
- Prioritize tribal priorities
- Center our environmental ethic



# A Unified Mission for the Second Century

*EBRPD... “preserves a rich heritage of natural and cultural resources and provides open space, parks, trails, safe and healthful recreation and environmental education. An environmental ethic guides the District in all of its activities.”*



A scenic landscape featuring rolling green hills under a clear blue sky. In the foreground, a field is filled with numerous small yellow, white, and purple wildflowers. Several trees are scattered across the scene; a large, dark, gnarled tree stands on the left, while a cluster of lighter-colored trees is on the right. The hills in the background are covered in green grass and some distant structures are visible.

THANK YOU