

# On-call Fuels Management Specialty Contracts

Presented by:  
 Fire Chief Aileen Theile  
 Fire Captain Patrick McIntyre  
 East Bay Regional Parks Fire Department  
 July 30, 2024



# On-call Specialty Contracts Bidding Process

## Contractors Attending Tour:

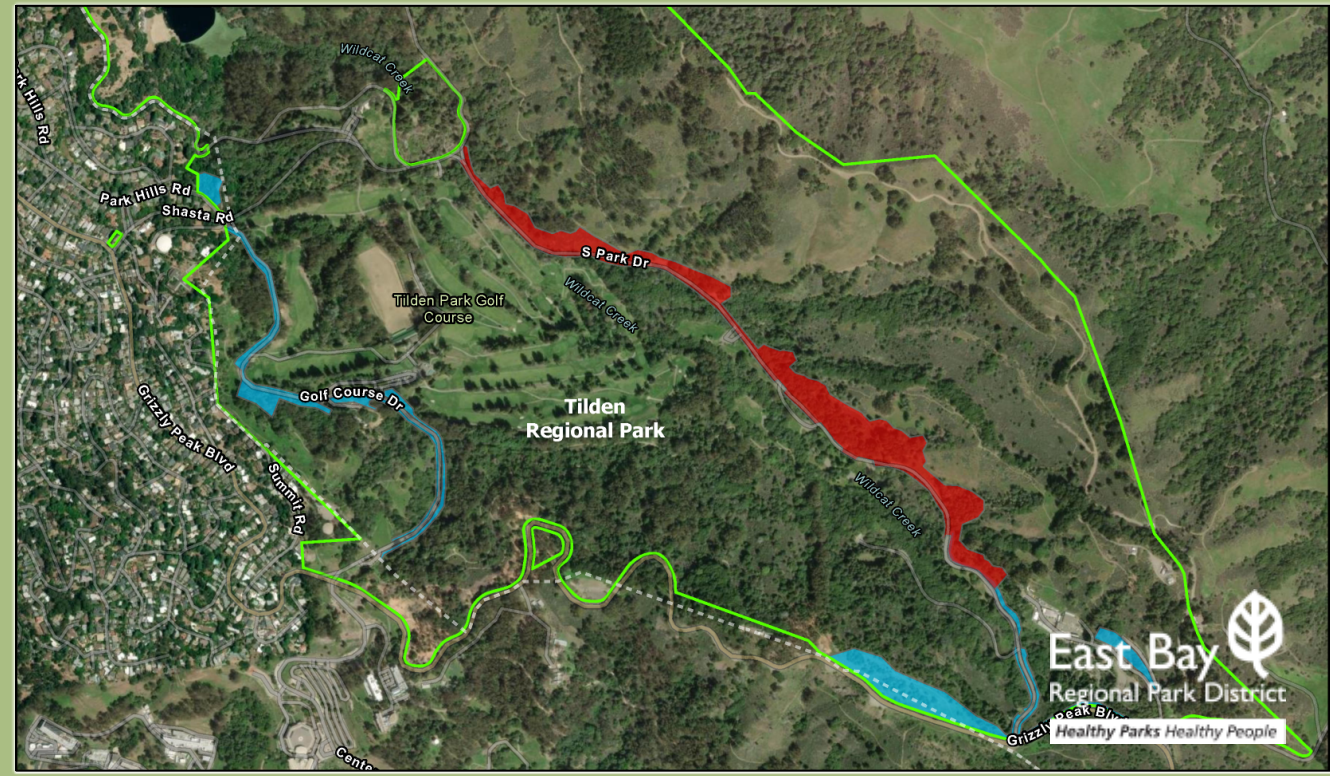
- 21

## Qualified Bids Received:

- 11

## Selection Process:

- Evaluation Method: Fuels Management staff graded proposals utilizing a scoring matrix.
- Outcome: The seven highest-scoring proposals have been selected for award.





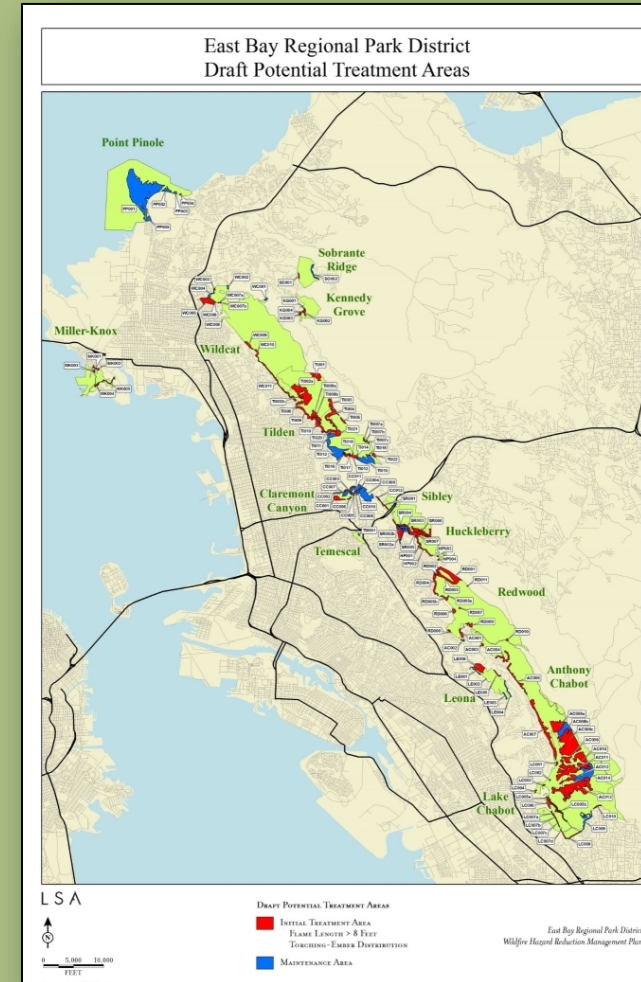
# Seeking Approval for On-call Fuels Management Specialty Contracts

## Award Contracts To:

1. Go Native
2. Community Tree
3. Hanford ARC
4. Expert Tree Service
5. Mountain F Enterprises INC
6. The Professional Tree Care Company
7. Skyview Tree Experts

## Contract Details:

- On-call contracts with no minimum value
- Combined annual maximum: \$4,000,000
- Initial one-year period with an option for two consecutive one-year extensions.
- Enable execution of various fuels reduction tasks
- Supports the District's Fuels Plan





# (A) Arboriculture/High Volume Tree Removal

## Services:

Felling and removing various-sized live or dead trees (eucalyptus, pine, etc.)

- Thinning forest stands up to specified tree diameters or spacing
- Reducing ladder and surface fuels (low-hanging limbs, fallen logs)
- Removing trees or limbs near structures, infrastructure, and utilities
- Handling hazardous or diseased trees or limbs
- Hauling large logs and high volumes of chips off-site
- Chipping brush and whole trees
- Masticating brush and mowing or weed-eating grass
- Applying herbicides via cut-stump, basal bark, and foliar
- Working around sensitive habitat areas





# (B) Forestry/Wildland Vegetation Maintenance

## Services:

- Surface and ladder fuel reduction via hand crew
- Conducting forest thinning using forestry mulch and lop/scatter
- Building burn piles in wildland environments
- Herbicide application via backpack and mobile spray apparatus
- Controlling weedy and invasive plants
- Working in sensitive habitats and steep terrain with difficult access
- Utilizing track chippers and masticators alongside hand crews
- Supervisors/crew capable of identifying invasive vs. native species
- Supervisors managing crews in diverse ecosystems





# 2024 On-call Fuels Management Specialty Contracts

## On-call Contracts Capabilities

**Allows immediate completion of contracts, enabling work on:**

- Proximity to Residential Areas: Parklands within 200 feet of homes
- Eucalyptus Stands: Areas with dense eucalyptus groves posing significant fire threats
- Strategic Fire Routes: Identification and maintenance of critical access routes for fire response
- District Facilities: Creation and maintenance of defensible space around essential operational facilities

**These factors are critical in prioritizing our efforts to mitigate fire risk and enhance safety across vulnerable areas.**



**BEFORE**



**AFTER**



# 2024 Fuels Management Initial Treatment Work Plan

## 2024 Planned Initial Entry with On-Call Contracts

- Tilden Regional Park
- Redwood Regional Park
- Sobrante Ridge Regional Park
- Lake Chabot Regional Park
- Anthony Chabot Regional Park
- Claremont Canyon Regional Preserve
- Carquinez Strait Regional Shoreline
- Sibley Volcanic Regional Preserve
- Kennedy Grove Regional Recreation Area

**Objective:** Initiate comprehensive fuels management strategies to mitigate fire risks and enhance safety across these critical areas





# Grizzly Peak Fuel Break Tilden



Before

After





# Anthony Chabot Roadside Clearance



Before

After





# Wildcat Canyon

After



Before



# 2024 On-call Fuels Management Specialty Contracts

## Summary:

- On-call contracts help manage large-scale tree removal projects and maintenance fuels management projects efficiently, allowing the Fuels Team to mitigate District land on a large scale.
- Ensures readiness and flexibility for urgent needs for fuels projects within one week.

A photograph of a large pile of cut logs and branches in a forest. The logs are stacked haphazardly, with some showing blue paint marks. The background is a dense forest with green trees and foliage.

Thank  
You