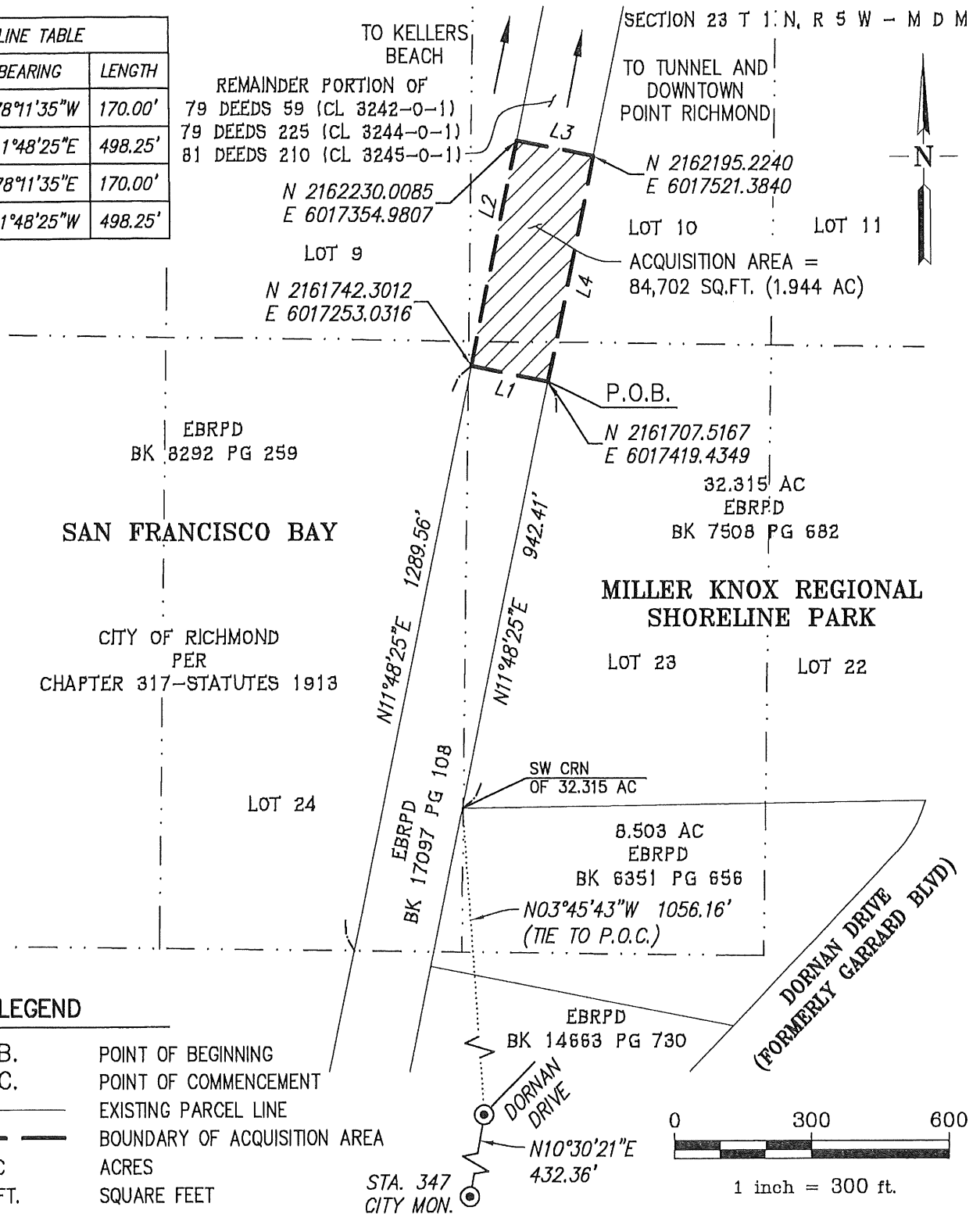


LINE TABLE		
LINE	BEARING	LENGTH
L1	N78°11'35"W	170.00'
L2	N11°48'25"E	498.25'
L3	S78°11'35"E	170.00'
L4	S11°48'25"W	498.25'



PLAT TO ACCOMPANY LEGAL DESCRIPTION

CITY OF RICHMOND, CONTRA COSTA COUNTY, CALIFORNIA

RJA
RUGGERI-JENSEN-AZAR
ENGINEERS • PLANNERS • SURVEYORS
4690 CHABOT DRIVE, SUITE 200 PLEASANTON, CA 94588
PHONE: (925) 227-9100 FAX: (925) 227-9300

SCALE:
1" = 300'

DATE:
10-14-2022

JOB NO.:
221017

G:\JOB2022\221017\SURVEY\CAD FILES\PLATS\221017-PATH.DWG 10/27/2022 3:21:40 PM

SECTION 23 T 1 N, R 5 W

SAN FRANCISCO BAY

EBRPD
BK 8292 PG 265

LOT 8

CITY OF RICHMOND
PER
CHAPTER 317-STATUTES 1913

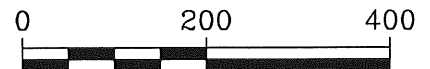
Radial Bearing Table	
No.	Bearing
R1	N73°15'40"W

Line Table		
Line	Bearing	Distance
L1	N78°11'35"W	13.99'
L2	N11°55'10"E	608.92'
L3	N12°29'50"E	53.75'
L4	N14°21'48"E	83.48'
L5	N07°33'02"E	15.42'
L6	N12°49'00"W	17.10'
L7	N55°01'22"W	21.85'
L8	N15°40'48"E	106.35'
L9	N13°16'15"W	21.50'
L10	S72°26'11"E	39.76'
L11	S09°11'20"W	31.02'
L12	S16°32'34"W	166.56'
L13	S03°33'58"W	41.48'
L14	S12°26'52"W	207.38'
L15	S11°47'49"W	544.76'
L16	S78°11'35"E	46.15'

Curve Table			
Curve	Radius	Delta	Length
C1	5789.65'	0°49'29"	83.34'

LEGEND

P.O.B. POINT OF BEGINNING
P.O.C. POINT OF COMMENCEMENT
— — — — — EXISTING PARCEL LINE
— — — — — BOUNDARY OF ACQUISITION AREA
AC ACRES
SQ.FT. SQUARE FEET



1 inch = 200 ft.

PLAT TO ACCOMPANY LEGAL DESCRIPTION

CITY OF RICHMOND, CONTRA COSTA COUNTY, CALIFORNIA

RJA
RUGGERI-JENSEN-AZAR
ENGINEERS ■ PLANNERS ■ SURVEYORS
4690 CHABOT DRIVE, SUITE 200 PLEASANTON, CA 94588
PHONE: (925) 227-9100 FAX: (925) 227-9300

SCALE:
1" = 200'

DATE:
10-14-2022

JOB NO.:
221017

LOT 9

LOT 10

52.75 AC.
EBRPD
BK 8292 PG 259

BEG
CURVE

ACCESS EASEMENT =
18,273 SQ.FT. (0.4 AC)

LOT 10

TO TUNNEL AND
DOWNTOWN
POINT RICHMOND

REMAINDER PORTION OF
79 DEEDS 59 (CL 3242-0-1)
79 DEEDS 225 (CL 3244-0-1)
81 DEEDS 210 (CL 3245-0-1)

32.315 AC
EBRPD
BK 7508 PG 682

P.O.C.

P.O.B.

PROPOSED
TAKE AREA

