



SPECIAL STATUS PLANTS & WILDLIFE AND UNIQUE HABITATS

PARK ADVISORY COMMITTEE
APRIL 28, 2025

Presented by Josh Phillips & Brook
Vinnedge, Ecological Services
Coordinators

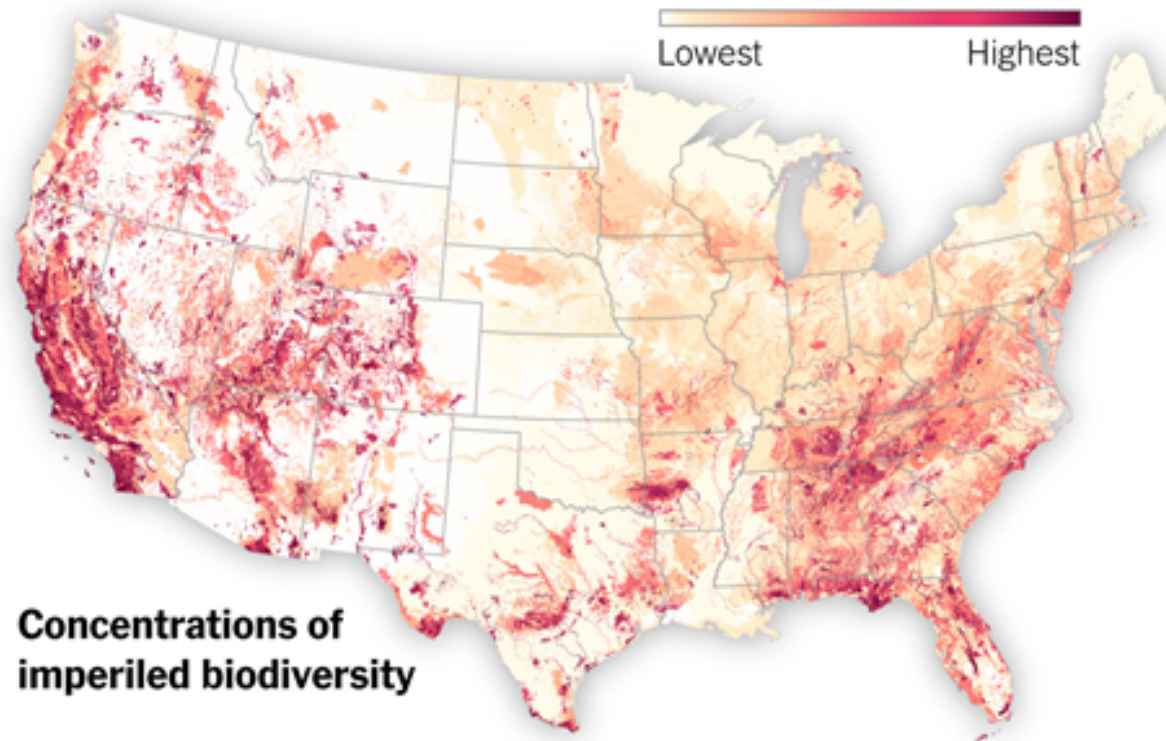
East Bay 
Regional Park District

**The East Bay Regional
Park District preserves a
rich heritage of natural
and cultural resources
and provides open space,
parks, trails, safe and
healthful recreation and
environmental education.
An environmental ethic
guides the District in all of
its activities.**



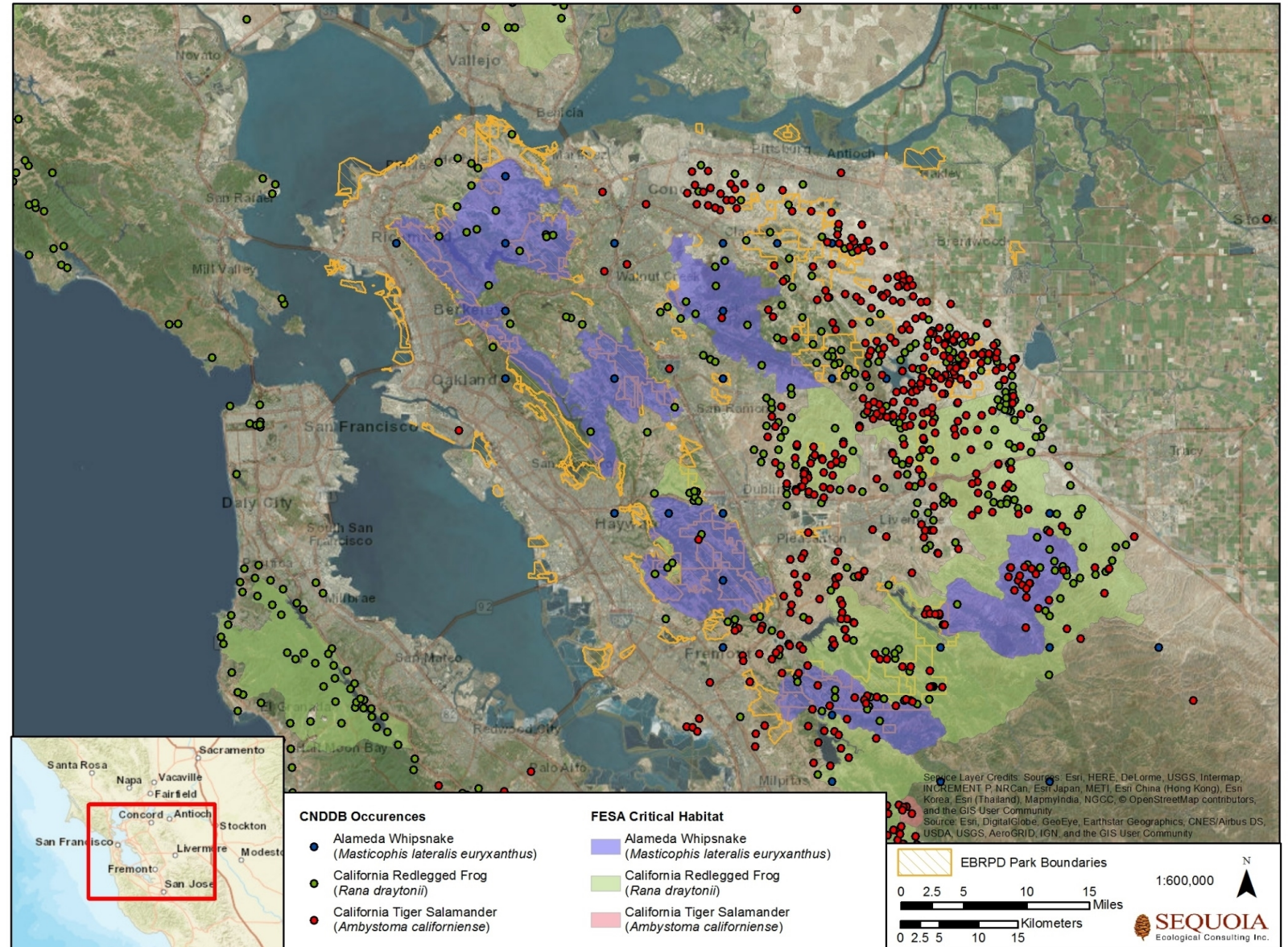
BAY AREA BIO-DIVERSITY HOTSPOT

- Our region is one of 35 Biodiversity hotspots in the world
- Endemic species – exist nowhere else
- 3 species only occur in bay area



HABITATS “CRITICAL” FOR SURVIVAL

- Manages and protects 126,809 acres over 73 parks
- 25 million visitors/year
- Critical role in protection of state and federally listed species
- Achieving goals of State of California's 30x30 Initiative



200+ SPECIAL-STATUS SPECIES POTENTIALLY PRESENT



California red-legged frog



Presidio clarkia



Salt marsh harvest mouse

Mammals

Salt Marsh Harvest Mouse
American badger
Mountain lion

Birds

California Ridgway's Rail
California Least Tern
Western Snowy Plover
Western burrowing owl
Golden/Bald Eagle

Reptiles

Alameda whipsnake
Western pond turtle

Amphibians

California tiger salamander
California red-legged frog
Foothill yellow-legged frog

Invertebrates

Longhorn fairy shrimp
Vernal pool fairy shrimp
Vernal pool tadpole shrimp
Crotch's Bumble Bee

Fish

Delta smelt
Longfin Smelt
Steelhead



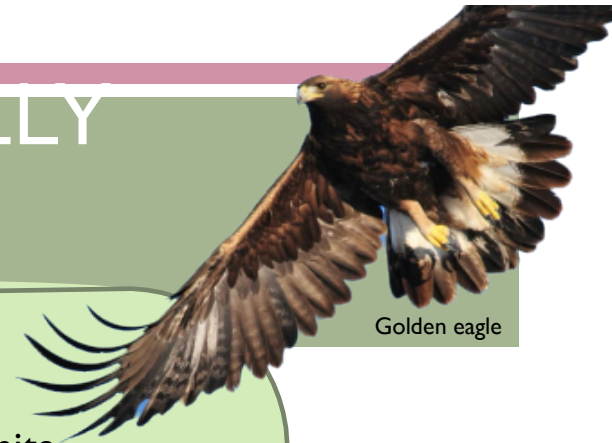
California Ridgway's Rail

Plants

Pallid Manzanita
Santa Cruz Tarplant
Presidio Clarkia
120+ Special-status species



California tiger salamander



Golden eagle



Vernal pool fairy shrimp



Vernal pool tadpole shrimp



Alameda whipsnake

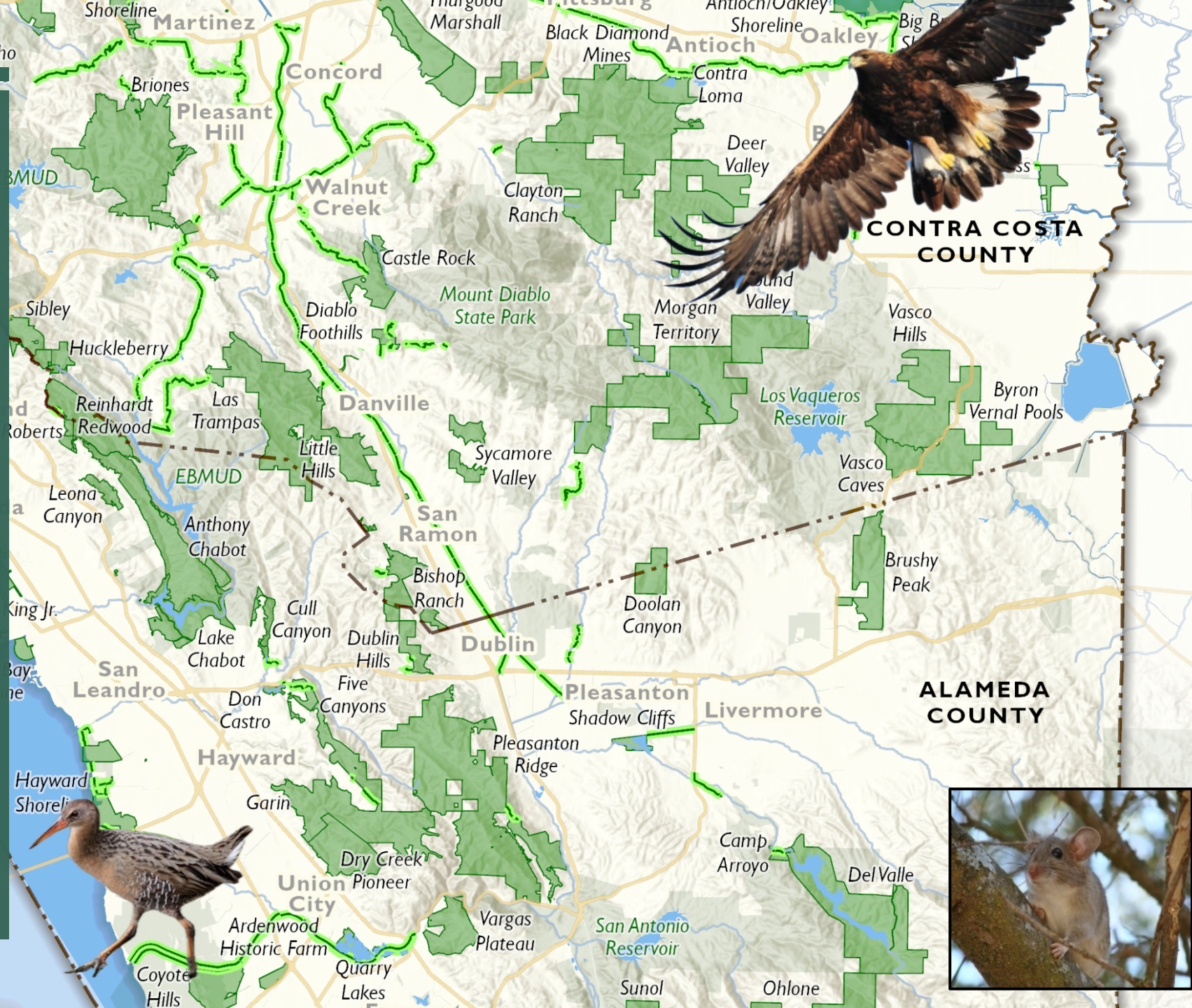
HOW DO WE KNOW WHERE THESE PLANTS AND ANIMALS ARE?

- Observation Databases (CNDDDB)
- Community Science (iNaturalist, eBird)
- EBRPD Monitoring Programs and Surveys
- Information from partners – agencies, landowners, universities and research institutions
- Vegetation/Habitat Mapping

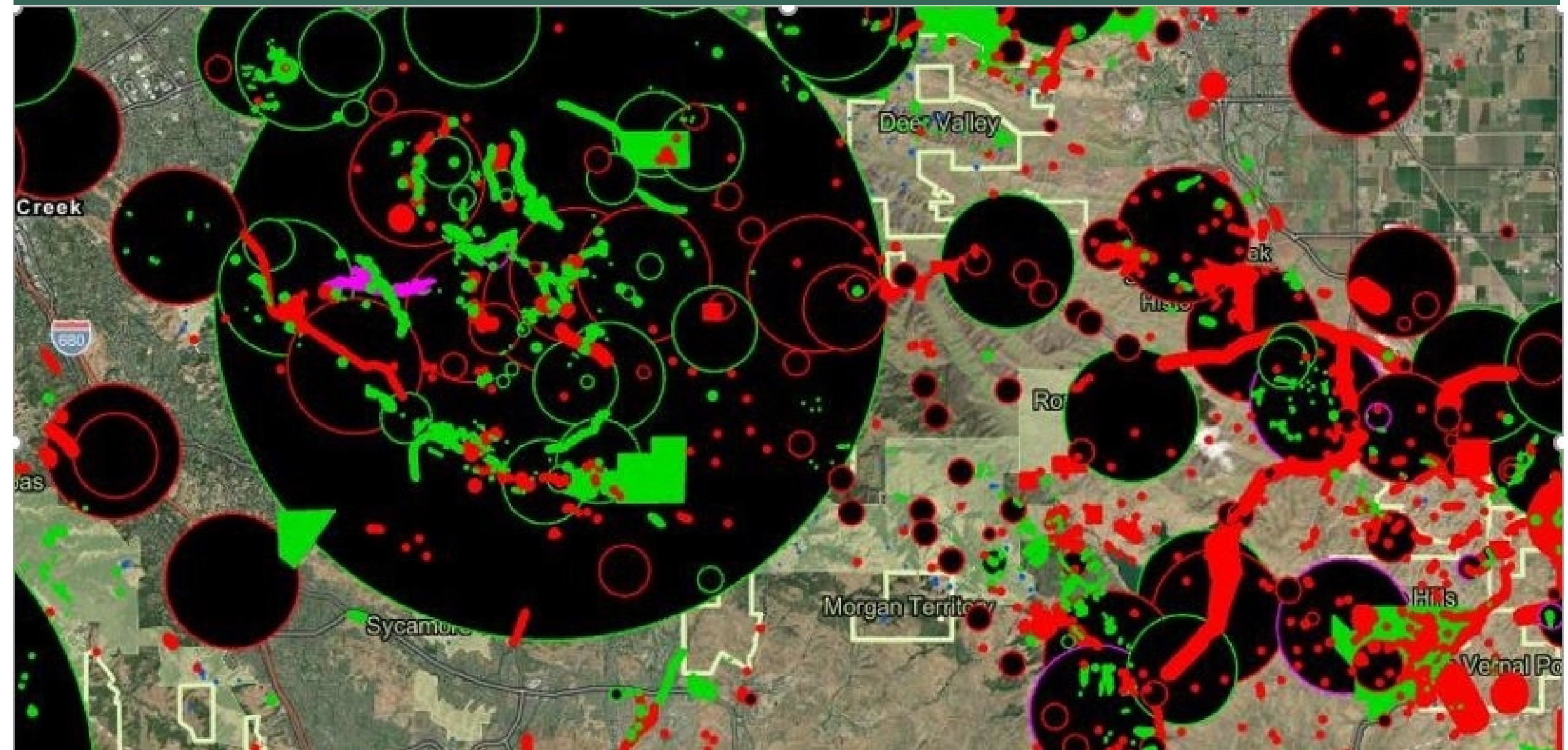
County Line

Roads

Major Streams



CALIFORNIA NATURAL DIVERSITY DATABASE (CNDDDB)



COMMUNITY SCIENCE: iNaturalist



East Bay Regional Park District Project

About

Members  40

A collection project bringing together observations made in our two-county system: Alameda and Contra Costa counties.

[Read More >](#)

 [Project Journal](#)

Overview 1,230,245
OBSERVATIONS

13,409
SPECIES

19,778
IDENTIFIERS

49,614
OBSERVERS

 Stats

Recent Observations


[View All](#)




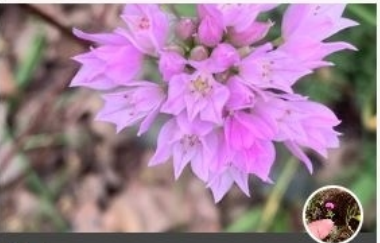
San Francisco Woodland-Star
Lithophragma affine  1 6 minutes ago




Mule's Ears
Genus *Wyethia*  2 38 minutes ago



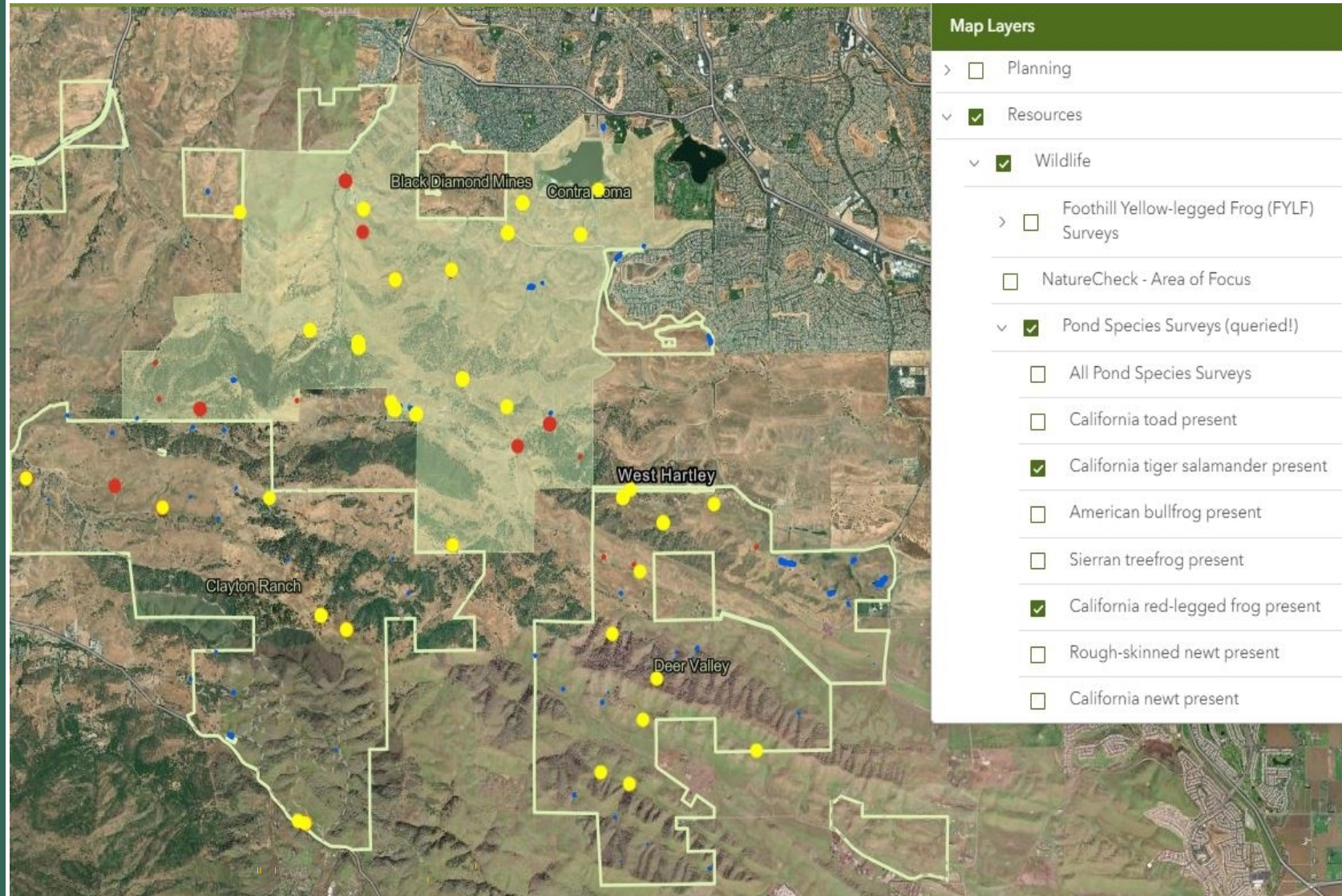
Unknown  33 minutes ago



Onions
Genus *Allium*  1 33 minutes ago

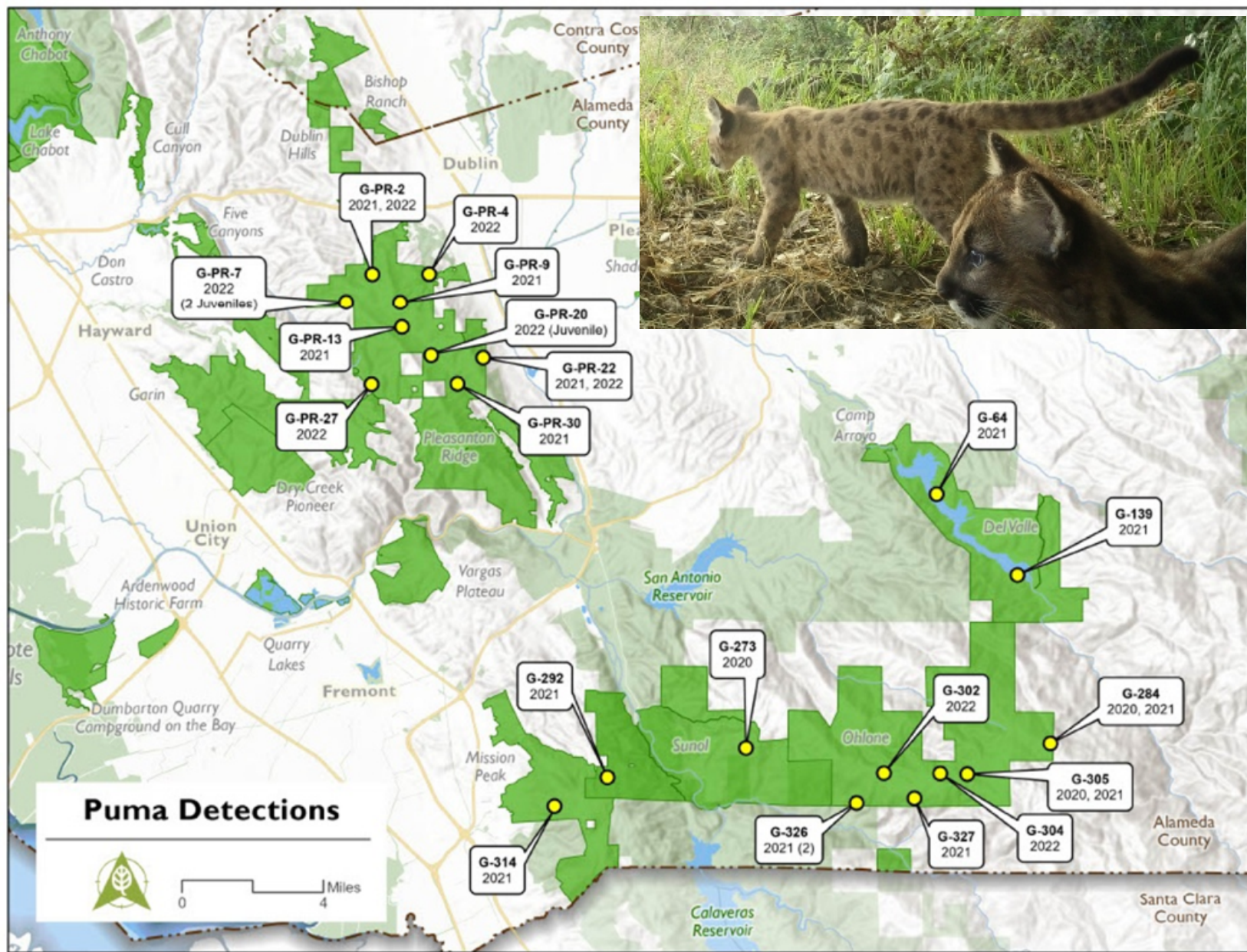
PARK DISTRICT MONITORING – PONDS PROGRAM

- 600 Ponds
- 130 ponds per year
- 20 years of data



PARK DISTRICT MONITORING

■ Hundred Camera Grid



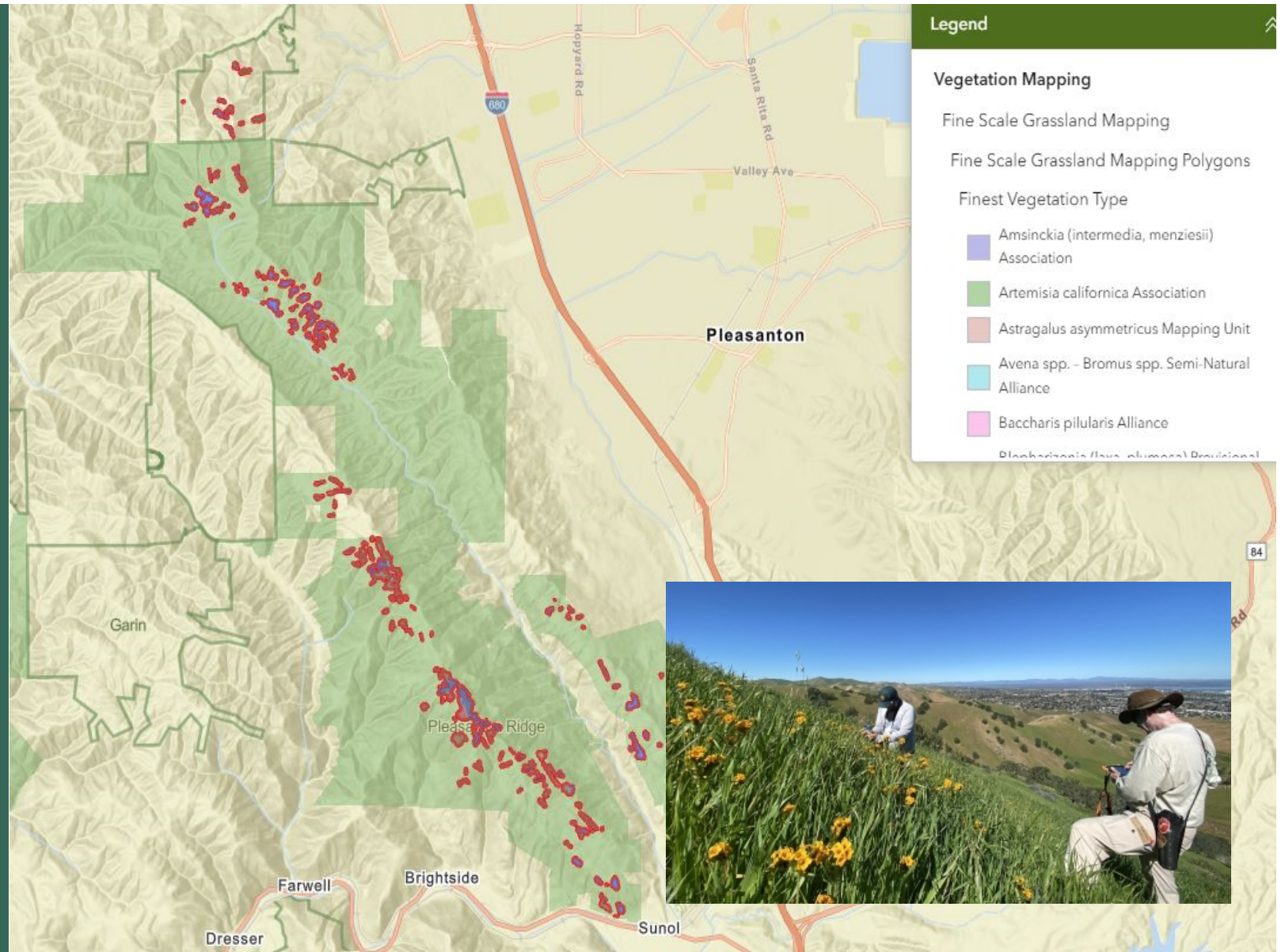
PARK DISTRICT MONITORING

- EBRPD shoreline parks provide islands of habitat for special status species.
- Only 5% of historic shoreline wetland habitat remain
- A major threat to shoreline habitat is sea level rise



RARE PLANT & VEGETATION COMMUNITIES MAPPING

- Fine-scale vegetation community mapping
- Focused mapping of native grasslands in some areas
- Rare plants are most often found in grasslands.
- 74% of the rare plant taxa occur within mapped grasslands.



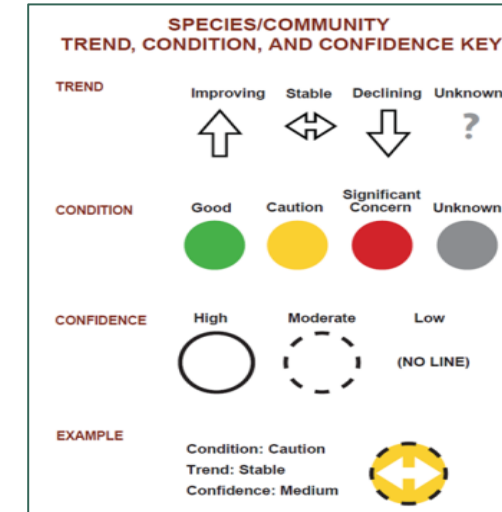
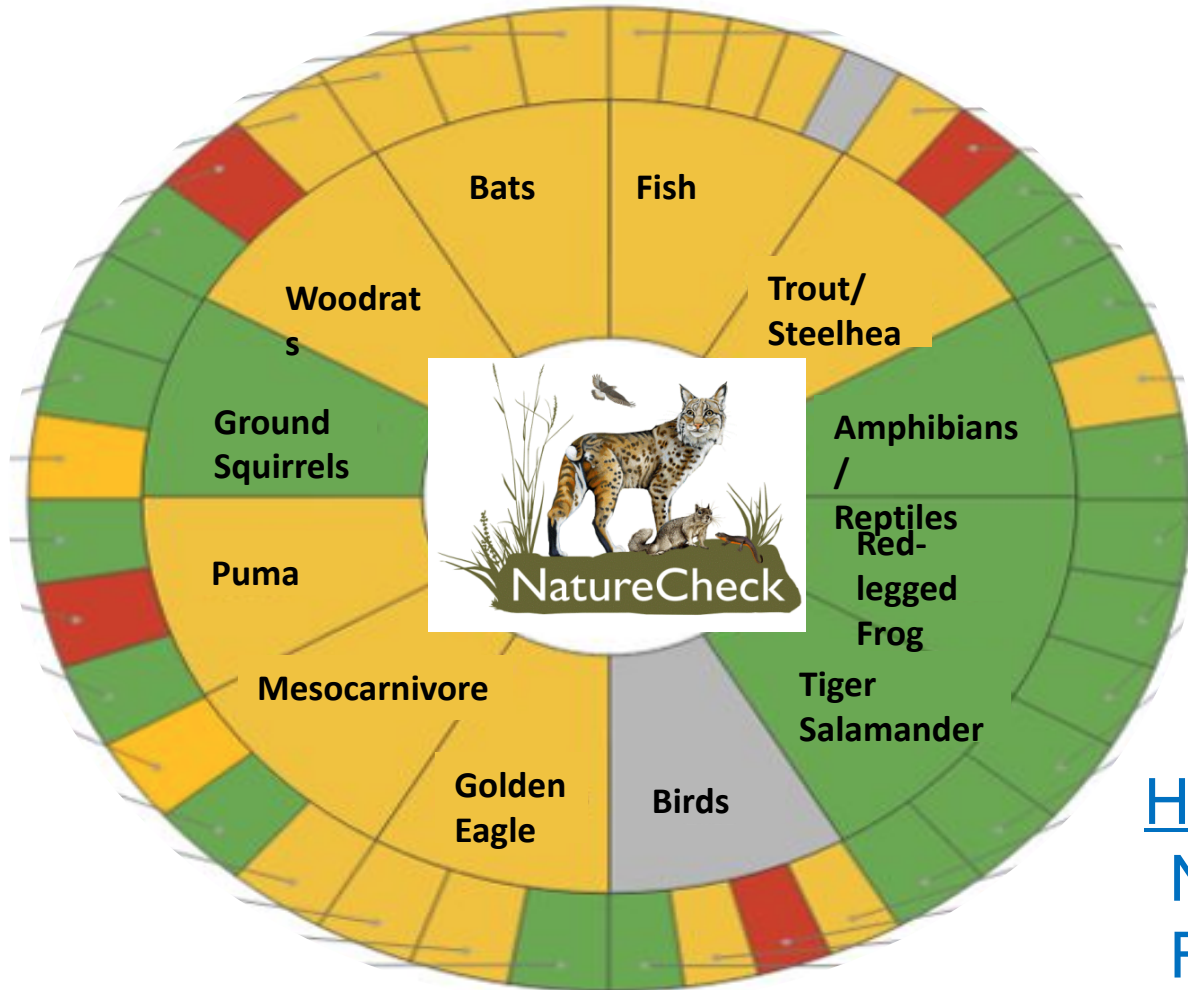


OTHER DATA

- ❑ Rare plant occurrences
- ❑ Pallid manzanita
- ❑ Golden eagle nests
- ❑ Fisheries surveys
- ❑ Burrowing owls
- ❑ Alameda whipsnake
- ❑ Streams & Reservoirs



USING DATA TO GUIDE US IN OUR ENVIRONMENTAL ETHIC



How are we doing in managing our lands for:
 Natural Resources – trends over time
 Future Generations – what should we protect?
BALANCING recreation and conservation



THANK YOU!

