

Authorization to execute a Letter of Intent with Guidiville Rancheria of California & City of Richmond for acquisition of property at Point Molate

*Presented by:
Sabrina Landreth, General Manager*

East Bay 
Regional Park District

Healthy Parks 
Healthy People

*Board of Directors Meeting
July 16, 2024*

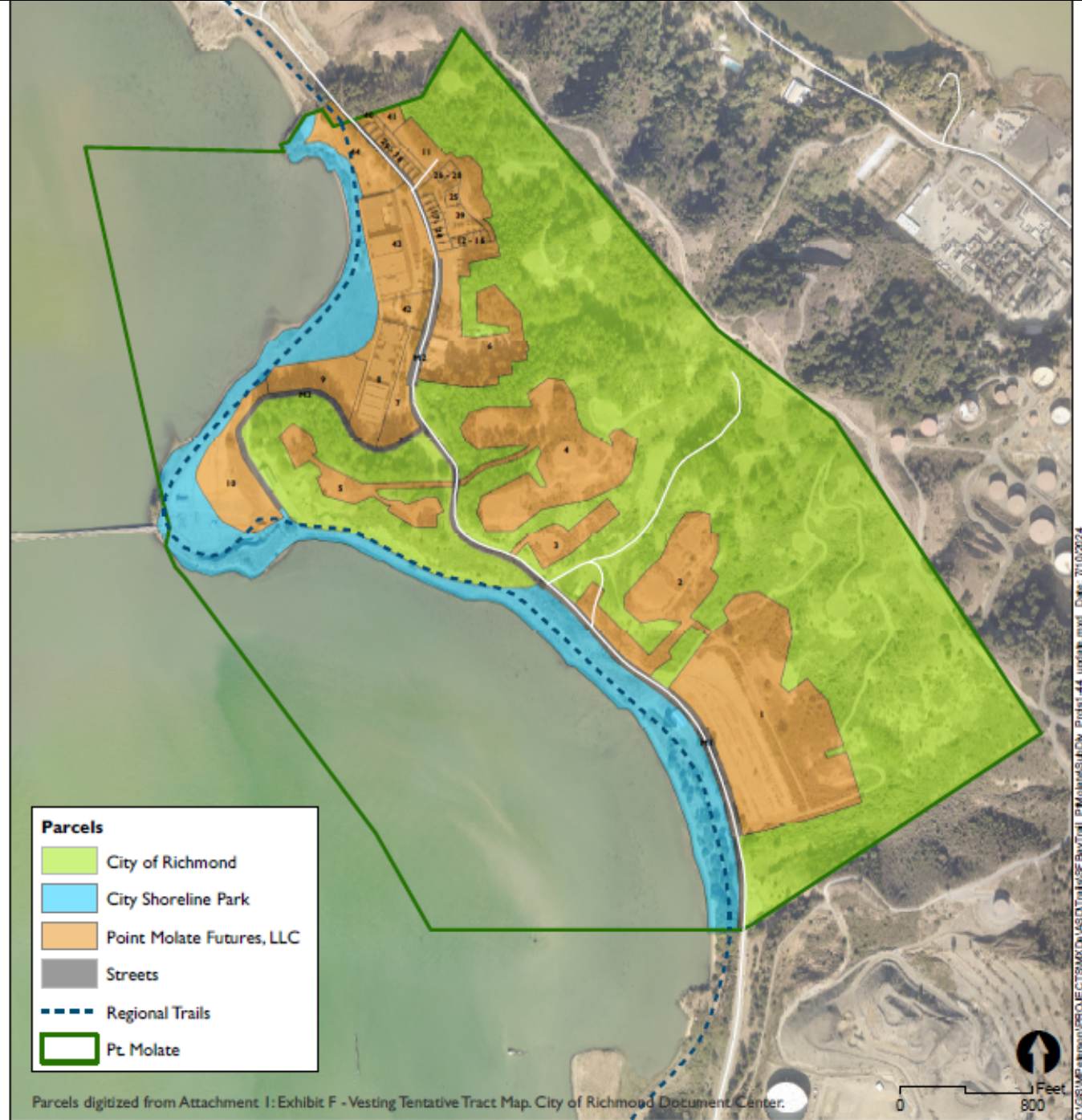
Request to Board of Directors

- Staff is seeking authority to execute a Letter of Intent with the Guidiville Rancheria of California and the City of Richmond related to the acquisition of property at Point Molate, located in the City of Richmond on the Point San Pablo Peninsula.

Background

- 1995: Molate Naval Fuel Depot closed; Park District interested in regional park
- 2005: Park District partnered with City of Richmond and CA State Coastal Conservancy to develop San Pablo Peninsula Open Space Study
- 2008: Measure WW approved by votes with Point Molate identified as a potential Regional Park in the Park District's Master Plan
- 2020: Working for over a decade, designs and necessary permitting adopted to extend the Bay Trail to Point Molate Beach Park;
- 2024: Park District will be initiating construction on the first segment of the Bay Trail to Point Molate

Point Molate Parcels



Key Terms

- Purchase Price = \$40 million (\$36 million State Coastal Conservancy)
- Earnest Money Deposit = \$1 million provided in two payments
- Park District reimburse Guidiville Rancheria of California = \$1 million
- Park District & City develop operation & management cost sharing agreement
- Closing intended to occur no later than January 15, 2025.

Recommendation

- Authorize staff to execute a Letter of Intent with the Guidiville Rancheria of California (Point Molate Futures, LLC) and the City of Richmond related to the acquisition of property at Point Molate, located in the City of Richmond on the Point San Pablo Peninsula.

Questions and Comments