

Wildcat Canyon Regional Park Bike Trail Project

March 19th, 2024

East Bay Regional Park District



Response to Public Interest

- Repeated requests from NICA and BTCEB for more appropriate access over the past decade
- Growth in local youth mountain bike teams and programs in West Contra Costa and Alameda Counties due to COVID-19
- Over 200 youth riding in Tilden and Wildcat several times per week after school
- Trail system has not expanded with growth of recreation and use



Project Objectives

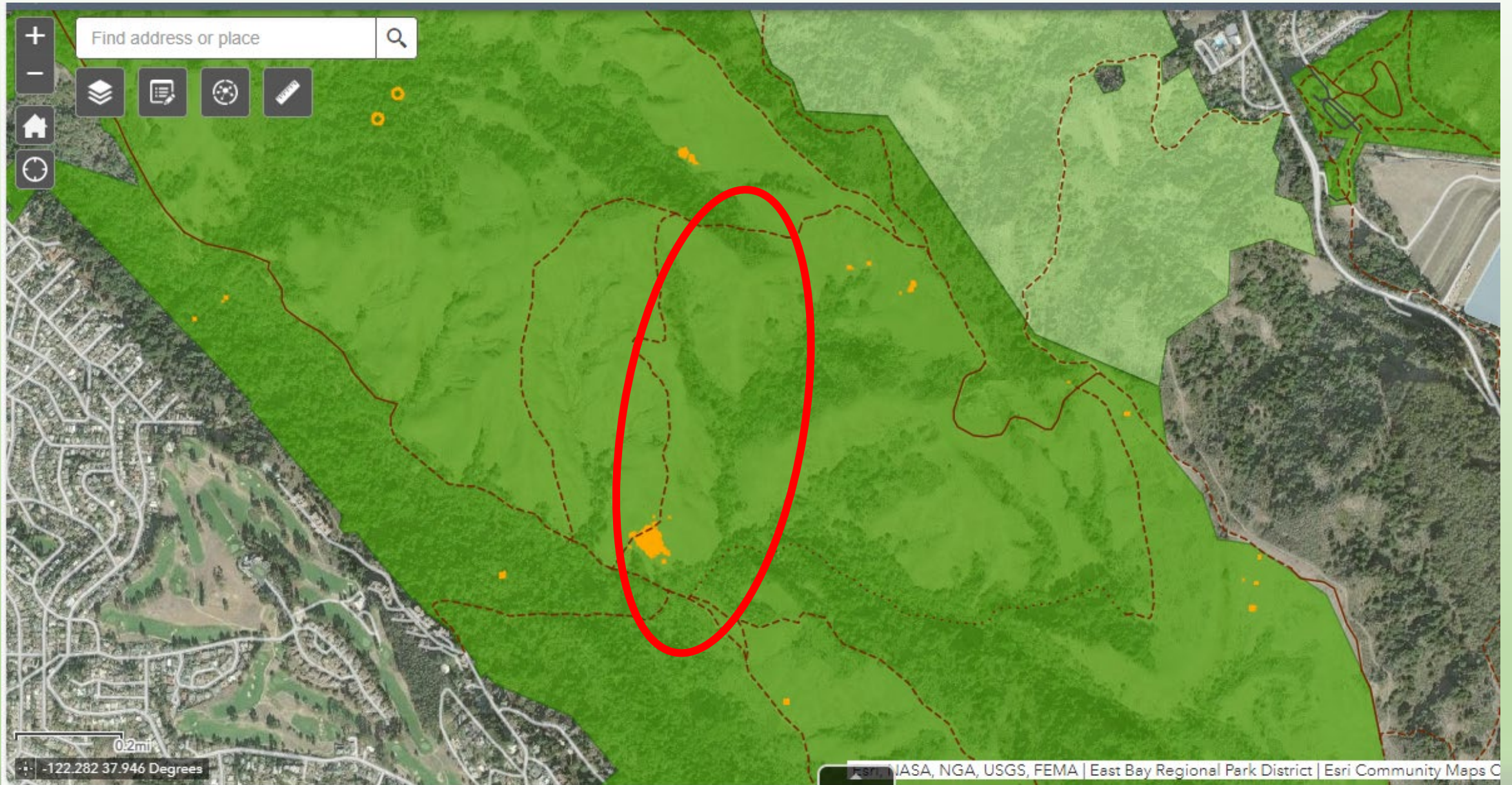
In response to public interest the Park District is considering options to develop a bike optimized trail in northwest Contra Costa and/or Alameda County that is geographically located to offer local youth mountain biking programs access after school on their bikes.

Additional project objectives include:

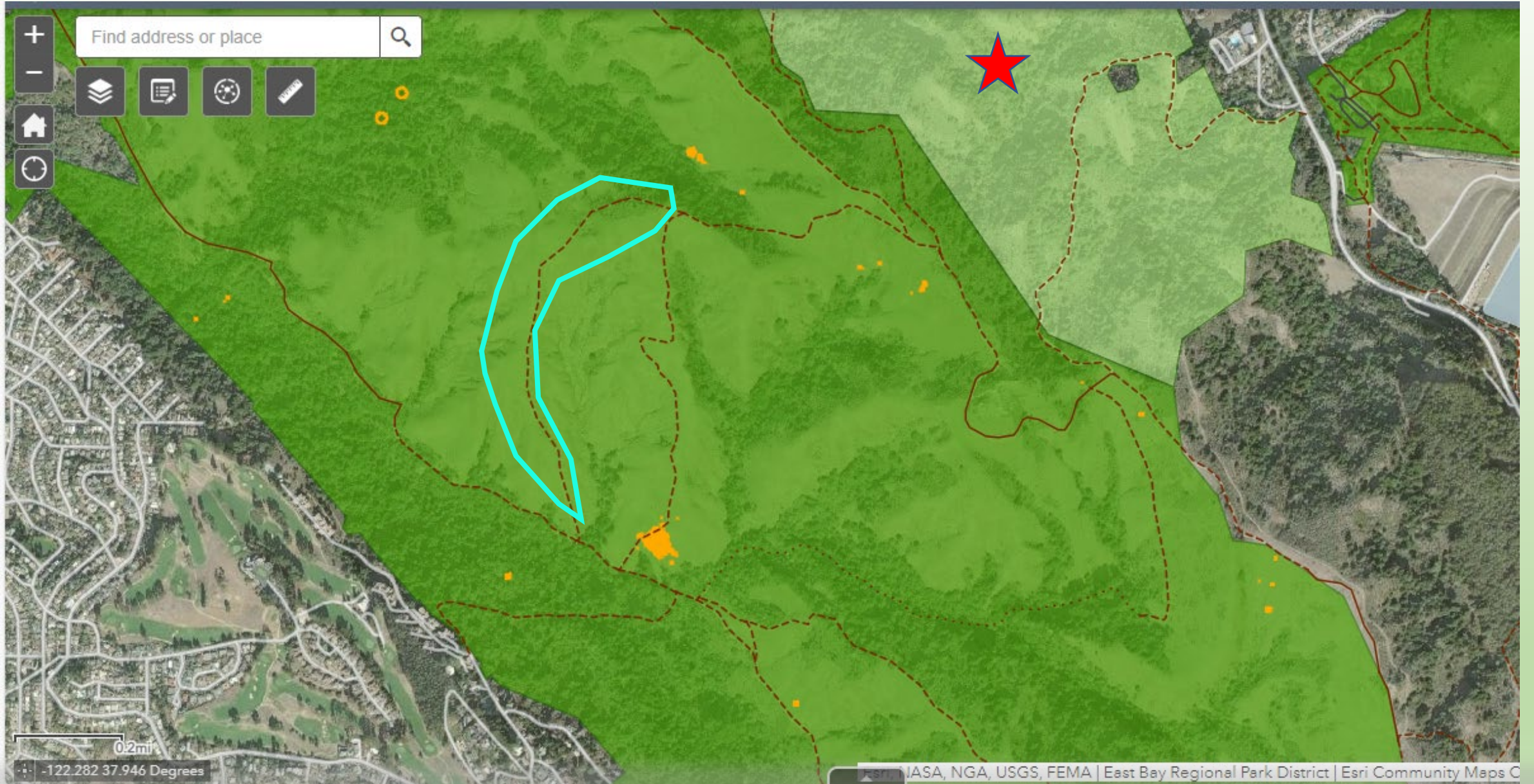
- Avoid or minimize impacts to listed biological resources and known cultural resources
- Work well within the circulation and use of the existing trail system
- Opened to bikes only and directionally to alleviate congestion elsewhere
- Reasonable management strategies and cost
- Appropriate mileage to meet desired loop criteria and user demand



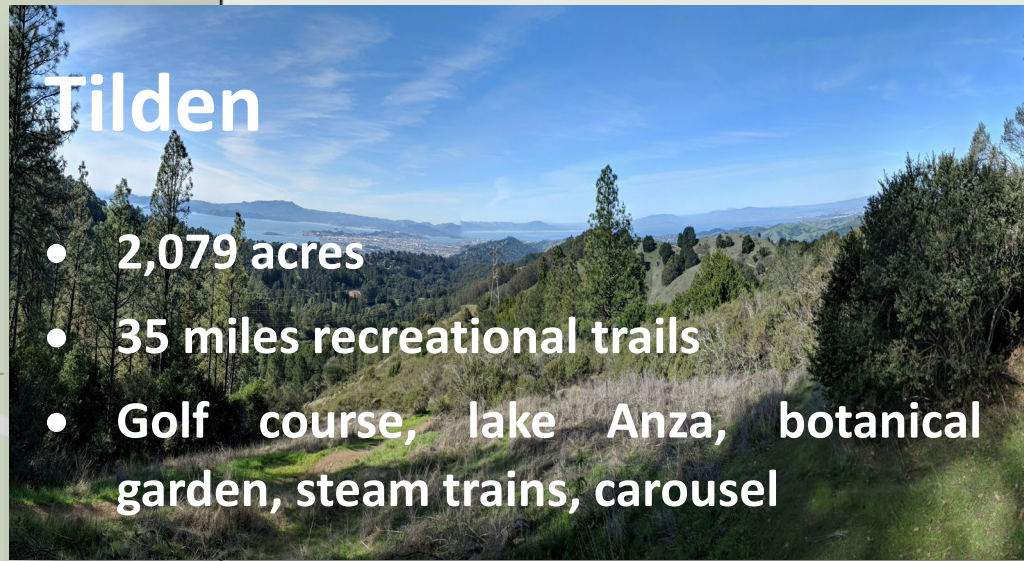
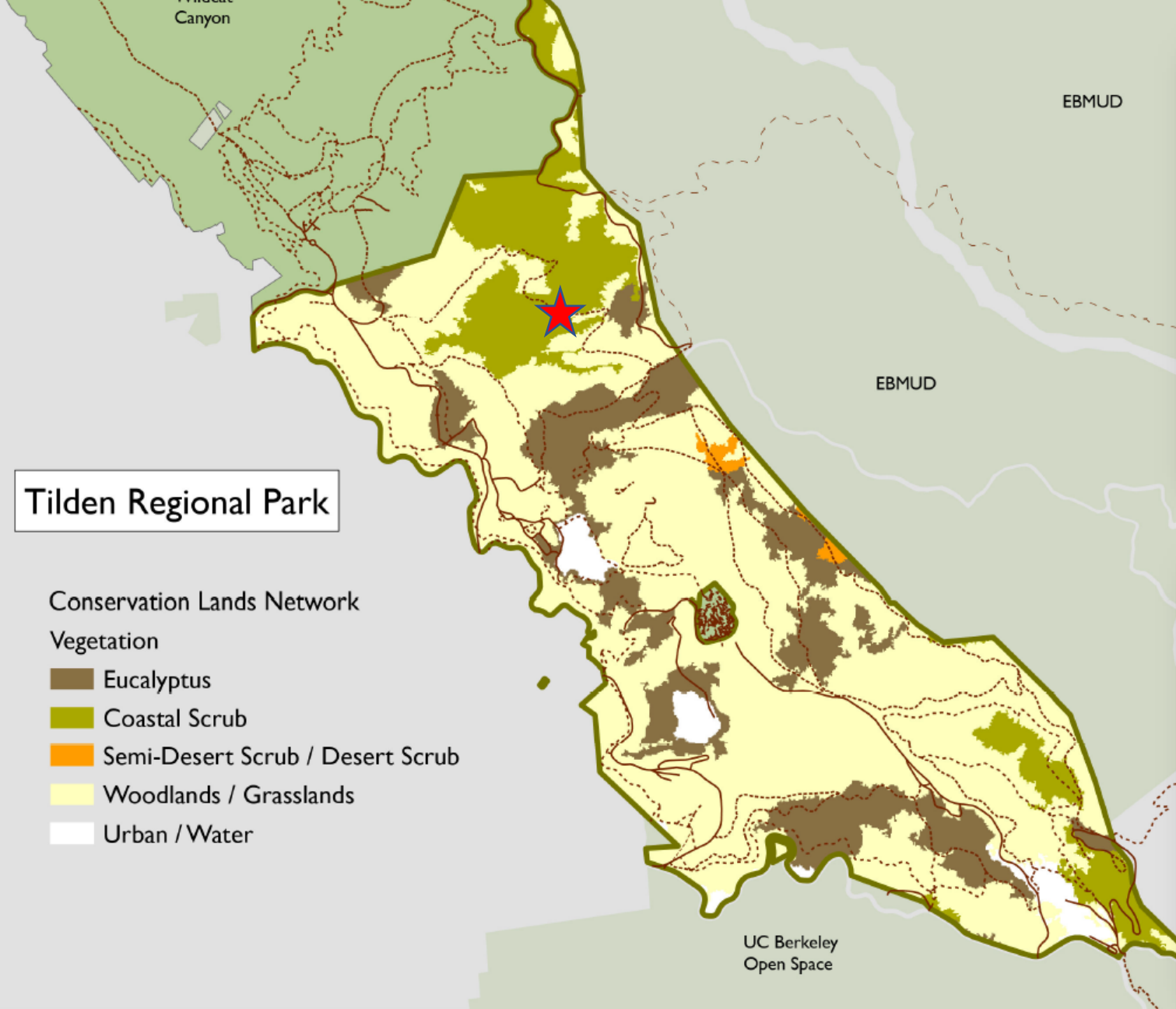
Response to Public Interest



Proposed Corridor in Wildcat Regional Park

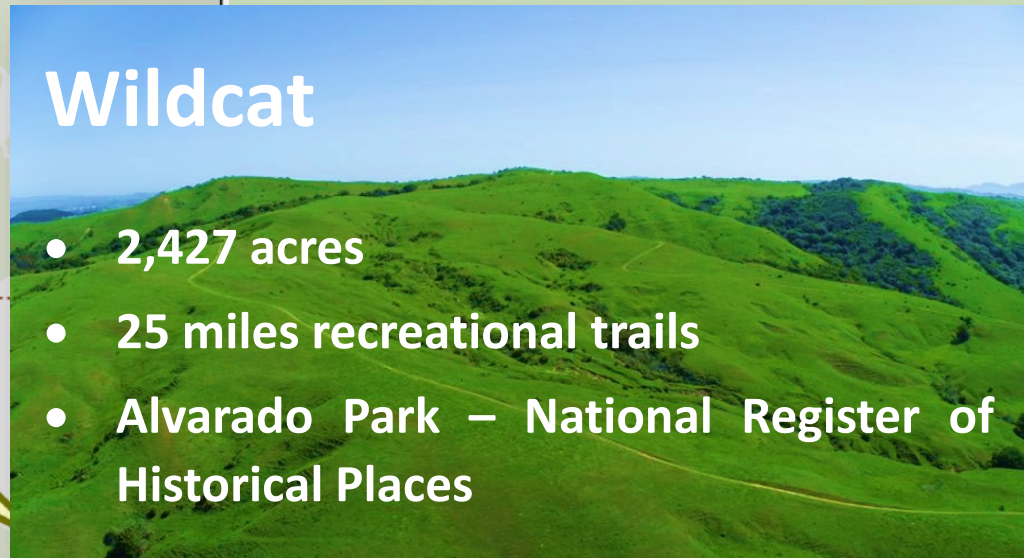


Current Corridor in Wildcat Regional Park



Tilden

- 2,079 acres
- 35 miles recreational trails
- Golf course, lake Anza, botanical garden, steam trains, carousel



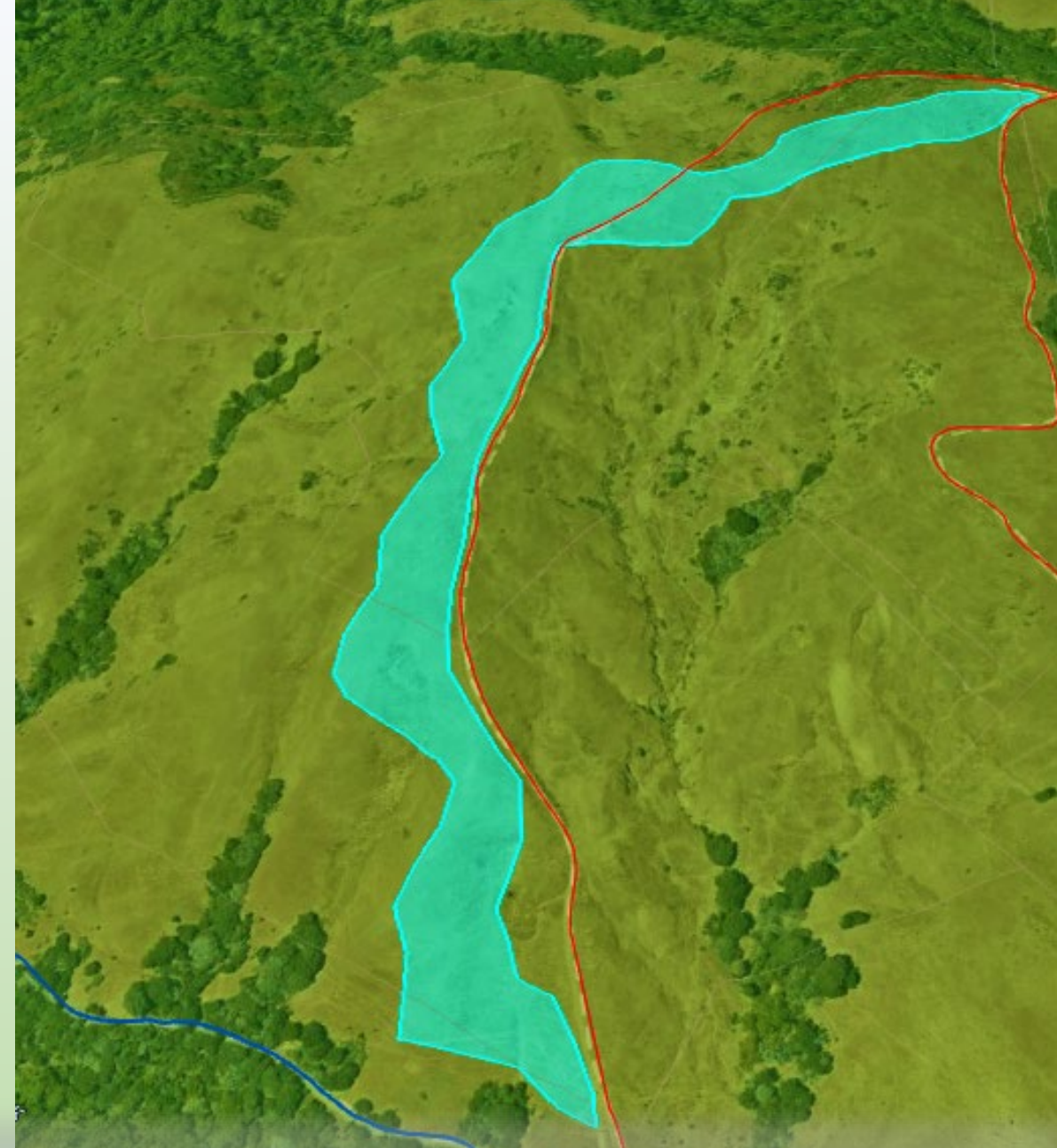
Wildcat

- 2,427 acres
- 25 miles recreational trails
- Alvarado Park – National Register of Historical Places

Wildcat Canyon and Tilden Regional Park Trail Systems

Evaluation Process

- Consulted with Stewardship and Operations staff to identify an appropriate corridor
- Completed initial cultural records review
- Conducted Biological Resources Assessment
- Completed wetland delineation
- Received public input



Current Corridor in Wildcat Regional Park

Additional Suggested Locations

In August 2023, the Park District received correspondence from the Regional Parks Association suggesting 3 additional locations for bike facilities.

Park District staff thoroughly evaluated each of these suggested locations in consultation with Stewardship and Cultural Resources staff;

- A location near to the Alvarado entrance to Wildcat Park
- A location in Sibley utilizing land that has been altered by quarry activity
- A location in Tilden utilizing areas of Eucalyptus groves

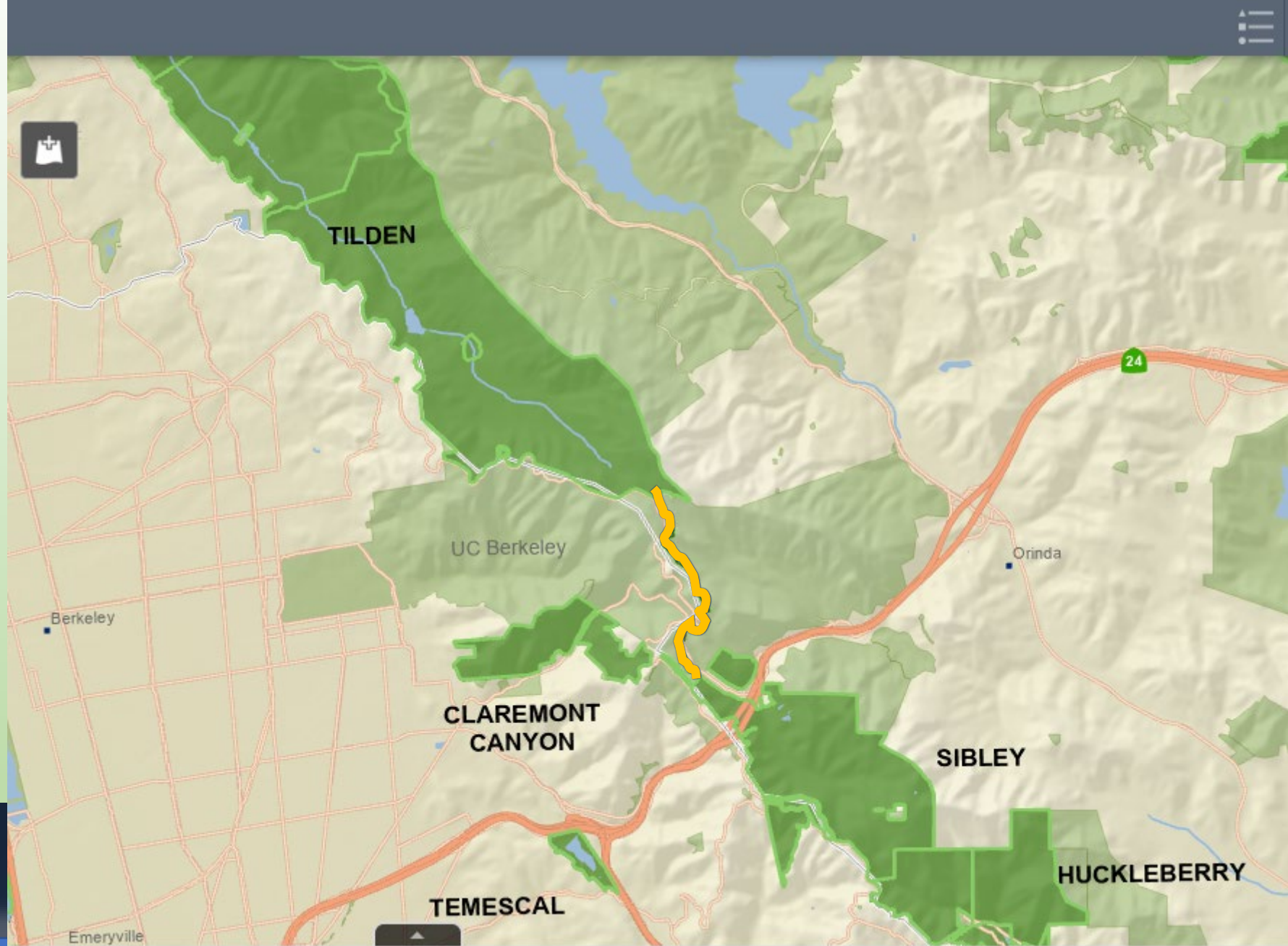


- Would not be located where existing Mountain Bike use is occurring
- Greater transportation impacts arising from distance from existing ridership
- Topography ill suited to provide desired downhill trail experience
- Known paleontological and cultural resources
- Greater biologic impacts due to known Alameda Whipsnake habitat



Wildcat – Alvarado Entrance

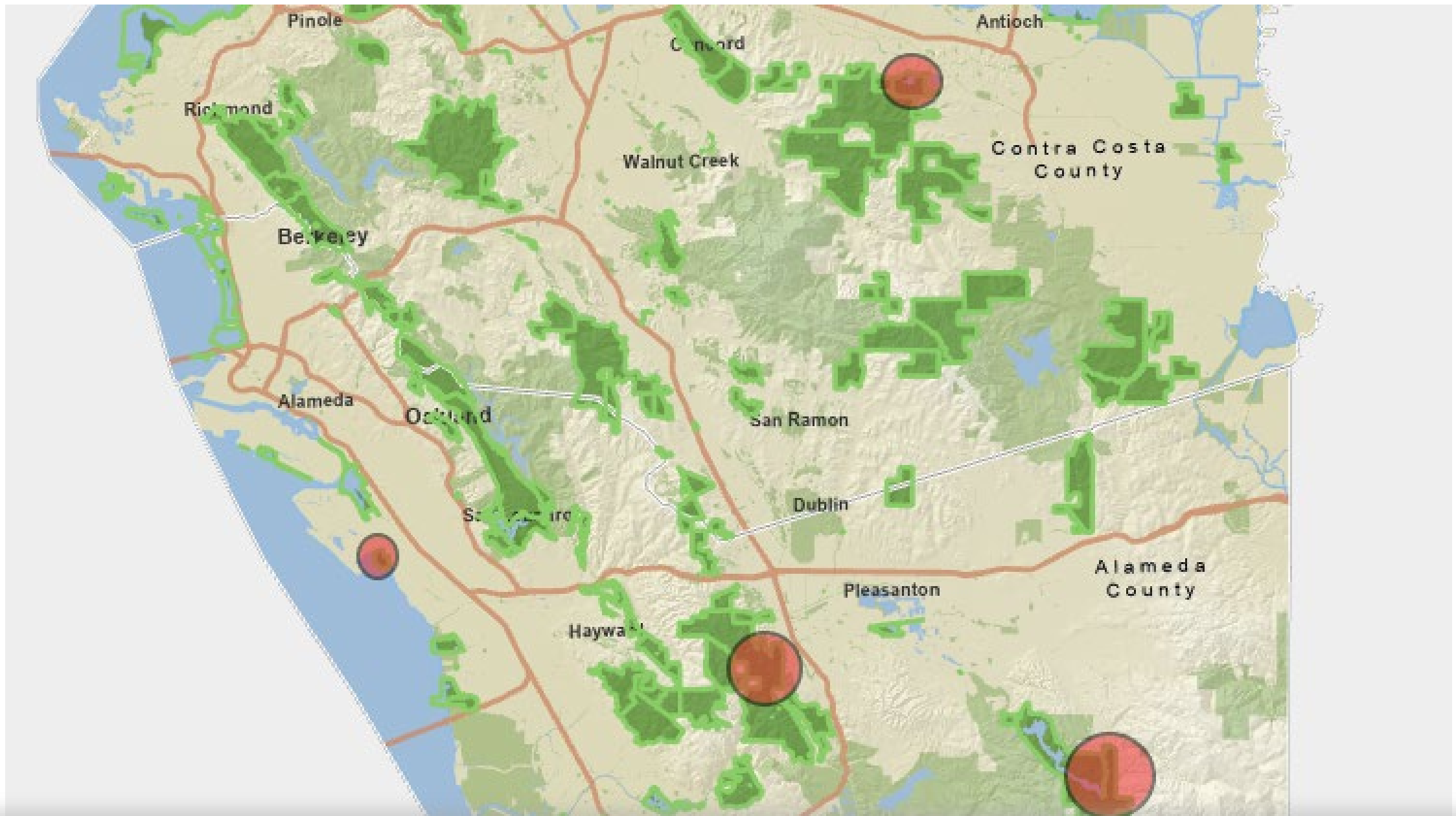
- Would not be located where existing Mountain Bike use is occurring
- Greater transportation impacts arising from distance from existing ridership
- Topography ill suited to provide desired downhill trail experience
- Sibley designated as a Regional Preserve
- Greater potential for Botanic and Biologic Impacts – Sibley previously evaluated for bike access as part of Sibley LUPA



Sibley Volcanic Regional Preserve

- Tilden already has high density trail system
- Greater potential for user conflicts given heavy use in Tilden
- Increased maintenance and safety concerns due to leaves and branch fall from eucalyptus





Future Considerations for Bike Facilities

www.ebparks.org/projects/wildcat-canyon-regional-park-wildcat-bike-trail

Next Steps

- Board approved \$300,000 for CEQA analysis of this project in the 2024 budget
- Hire consultant to conduct initial study and determine the appropriate level of CEQA analysis
- Public engagement and outreach
- Board adoption of CEQA findings and project approval
- Design and construction