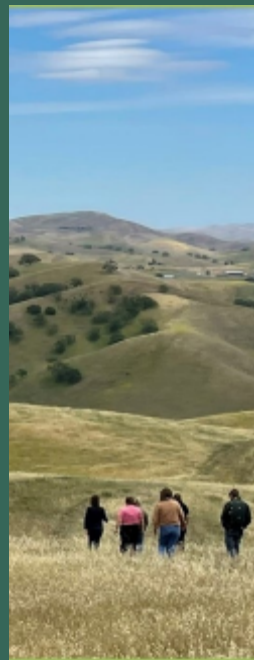




# 2<sup>ND</sup> CENTURY DISTRICT PLAN – UPDATE AND 2013 MASTER PLAN REVIEW

EXECUTIVE COMMITTEE – JUNE 5<sup>TH</sup>, 2024



The East Bay Regional Park District preserves a rich heritage of natural and cultural resources and provides open space, parks, trails, safe and healthful recreation and environmental education. An environmental ethic guides the District in all of its activities.





# SECOND CENTURY DISTRICT PLAN NEXT STEPS



## Ongoing

- Continued Staff Engagement
- Recreation/Conservation Lands Analysis
- Ward Reports
- Background Papers
- Trails Strategic Plan
- Capital Project Prioritization

Ongoing

## Phase II

- Further Community and Agency Engagement
- Stakeholder and Community Leader Meetings
- Prioritization of Needs
- Development of Goals
- Draft 2CDP

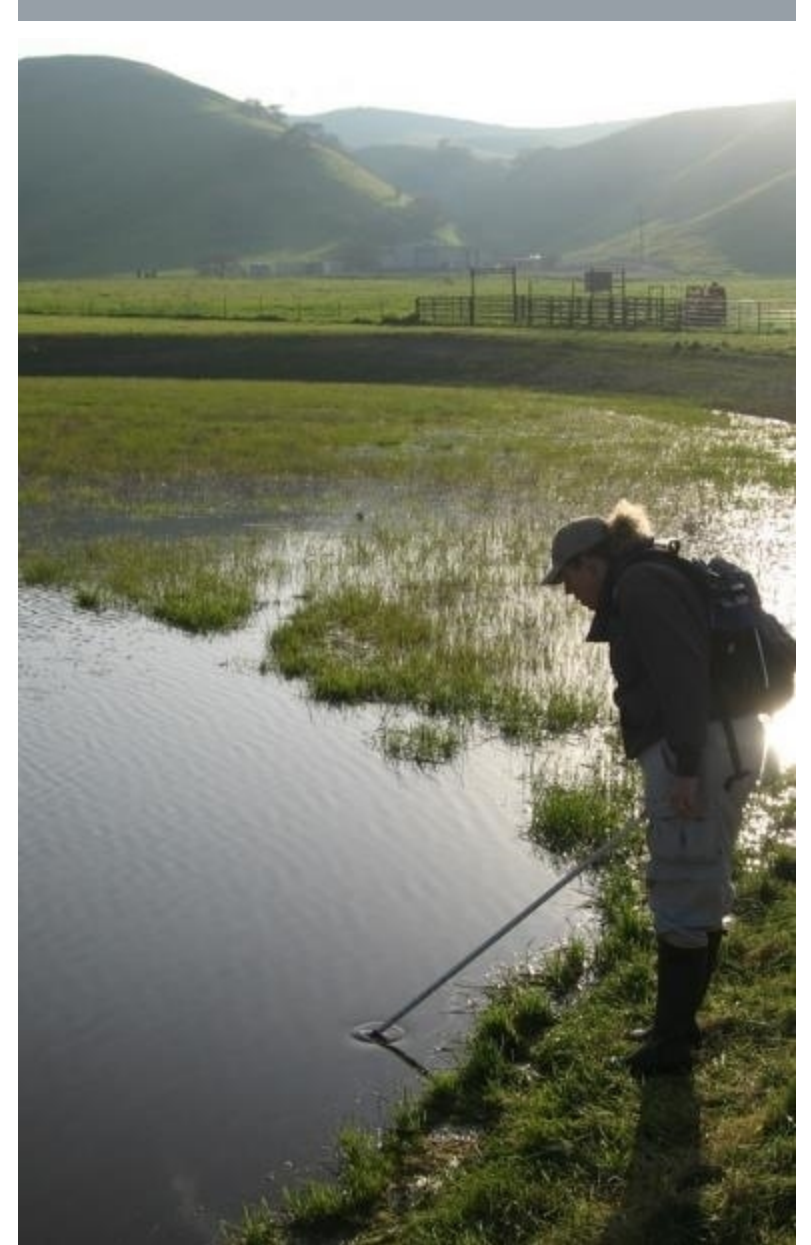
2025

## Summer 2024

### Phase 1 Consultant Contract

- Background Information and Data Analysis
- Policy Analysis
- Budget and Funding Analysis
- Initiate Community and Agency Engagement

# DECISION SUPPORT TOOL (DST) FOR CONSERVATION AND PUBLIC ACCESS PLANNING





# PARKLAND DECISION SUPPORT TOOL



## Decision Support Tool Goals

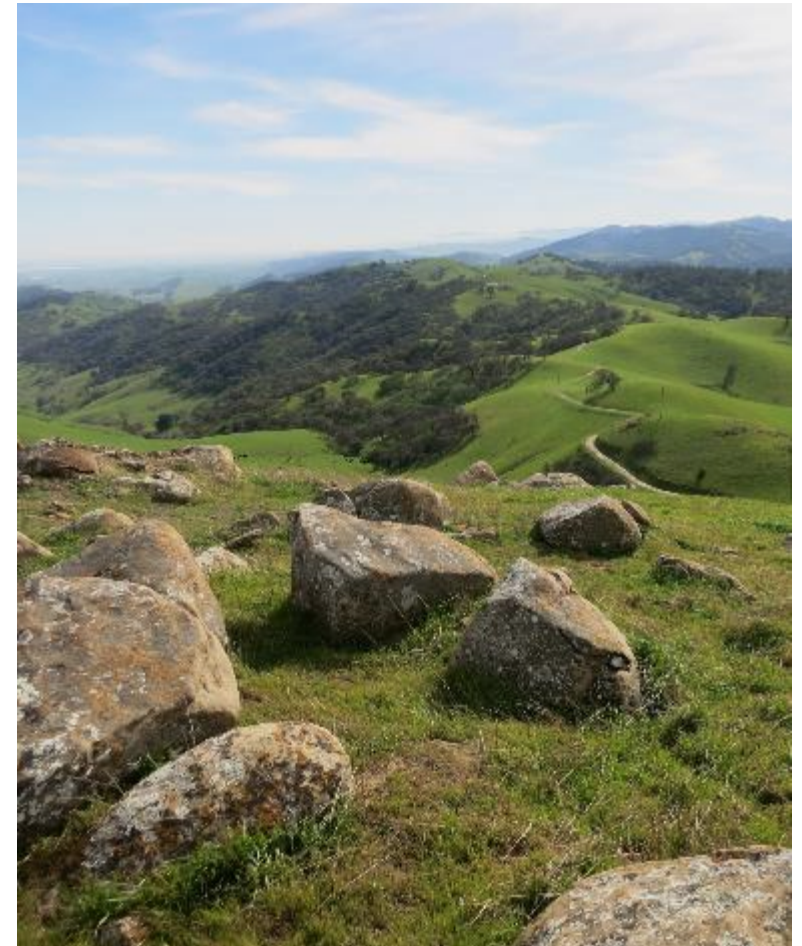
- Assess conservation & recreation balance across open parklands
- Identify *conservation & recreation focus areas* in open parklands
- Recommend *conservation / recreation focus areas* for future parklands

## Conservation Focus Areas

- Identify areas with significant resources
- Identify potential mitigation and restoration areas

## Recreation Focus Areas

- Identify areas with high recreational use
- Identify areas suited for new public access amenities



# DECISION SUPPORT TOOL

DST



Conservation Focus  
Area

Recreation Focus  
Area

Wildlife Index

Vegetation Index

Recreation Index

Equitable Access  
Index

Listed species  
Pond data  
Nest surveys  
HCP lands

Rare plants  
Fine-scale mapping

Trail density  
Allowable trail use  
Destination facilities  
Reservable facilities

Census data  
Social barriers  
Public transit data  
Placer. data

Input from  
Stewardship,  
Trails, I & R,  
Business  
Services

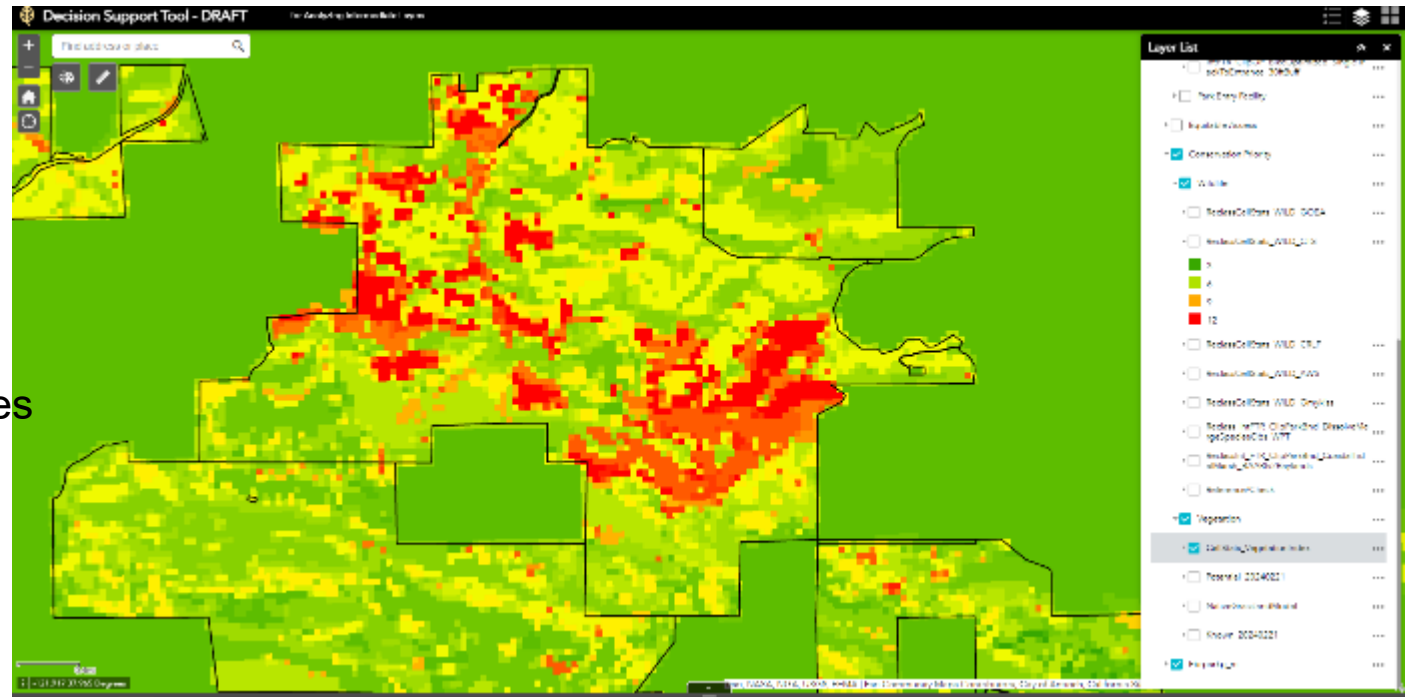






# DECISION SUPPORT TOOL

Sensitive  
Vegetation  
Occurrences



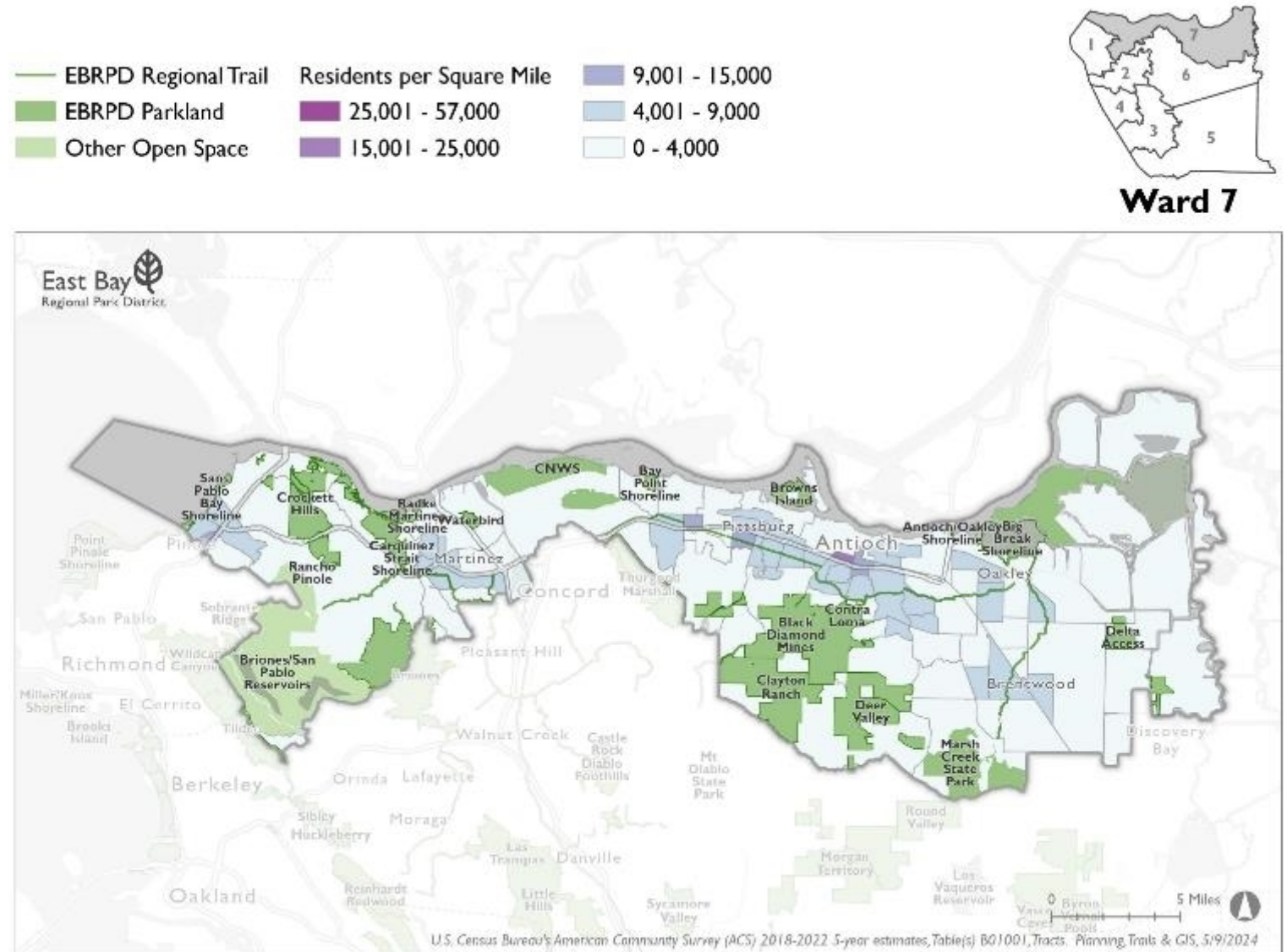


# WARD REPORTS

- Summary of major facilities, resources, governance, etc. within each Ward;
- Background information for Board members, consultant team, and 2DCP
- Use for ongoing Board/PAC/staff onboarding information

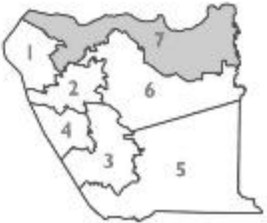


- Summary of major facilities, resources, governance, etc. within each Ward;
- Background information for Board members, consultant team, and 2DCP
- Use for ongoing Board/PAC/staff onboarding information

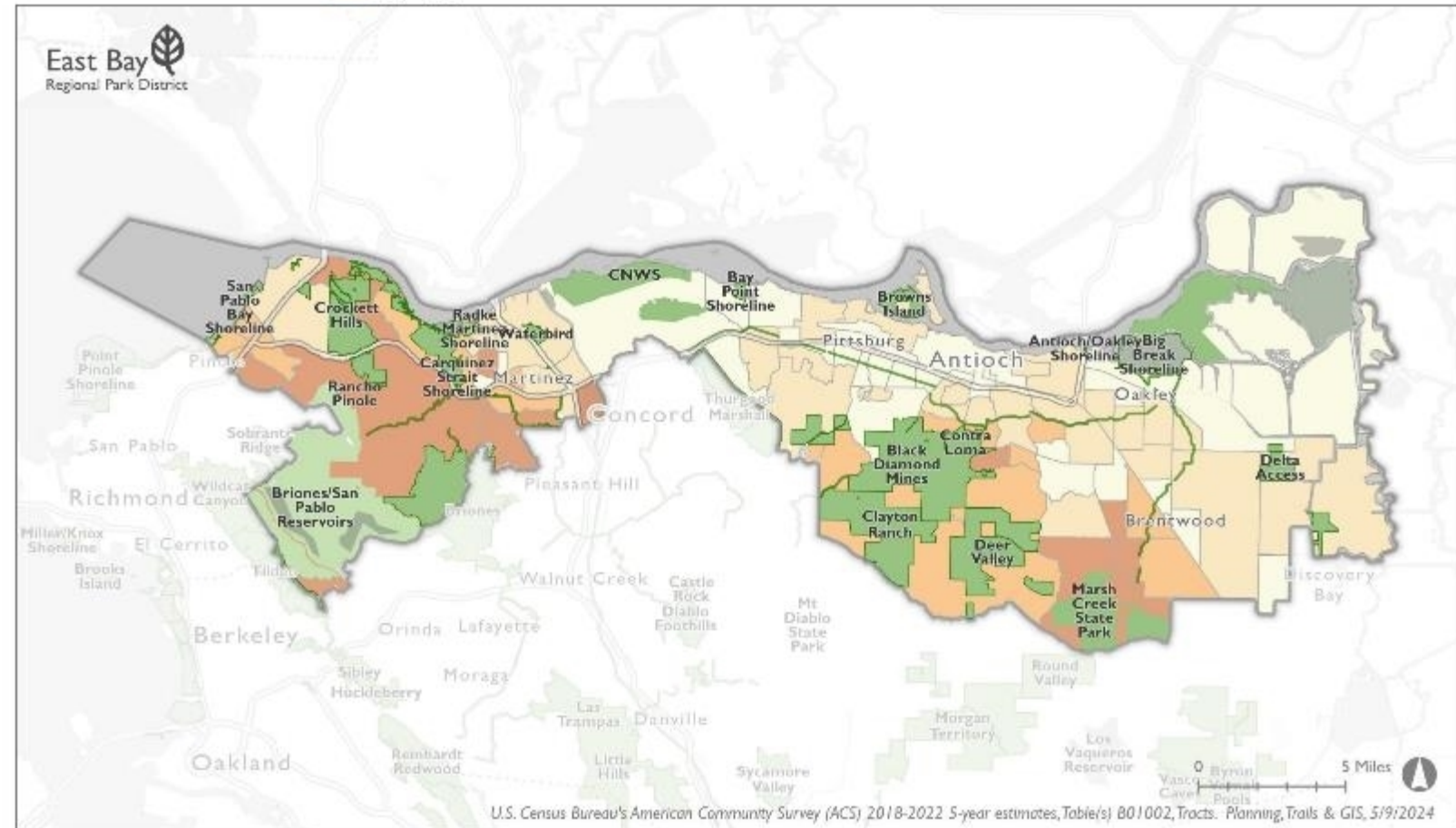


# WARD REPORTS

- Summary of major facilities, resources, governance, etc. within each Ward;
- Background information for Board members, consultant team, and 2DCP
- Use for ongoing Board/PAC/staff onboarding information



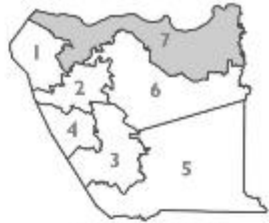
**Ward 7**



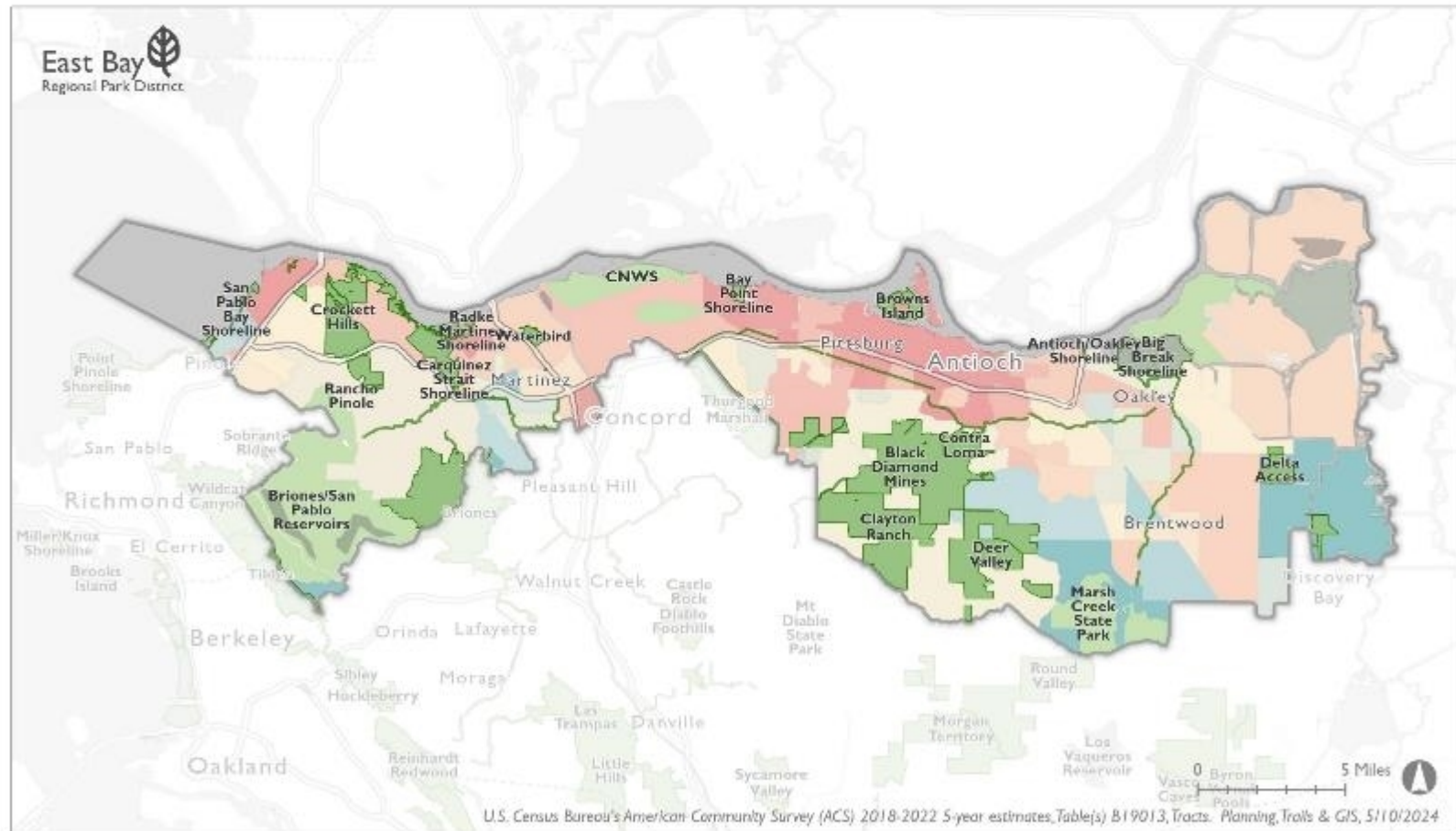


# WARD REPORTS

- Summary of major facilities, resources, governance, etc. within each Ward;
- Background information for Board members, consultant team, and 2DCP
- Use for ongoing Board/PAC/staff onboarding information



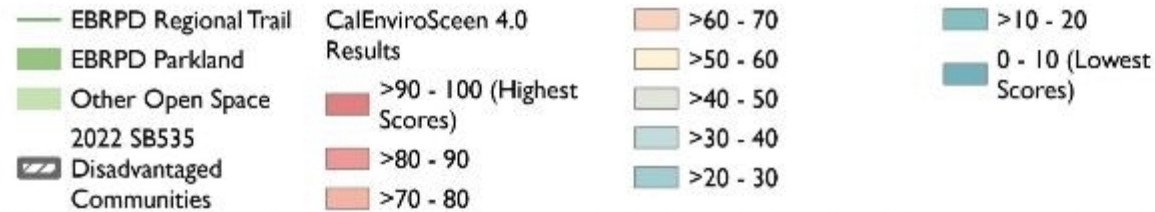
**Ward 7**



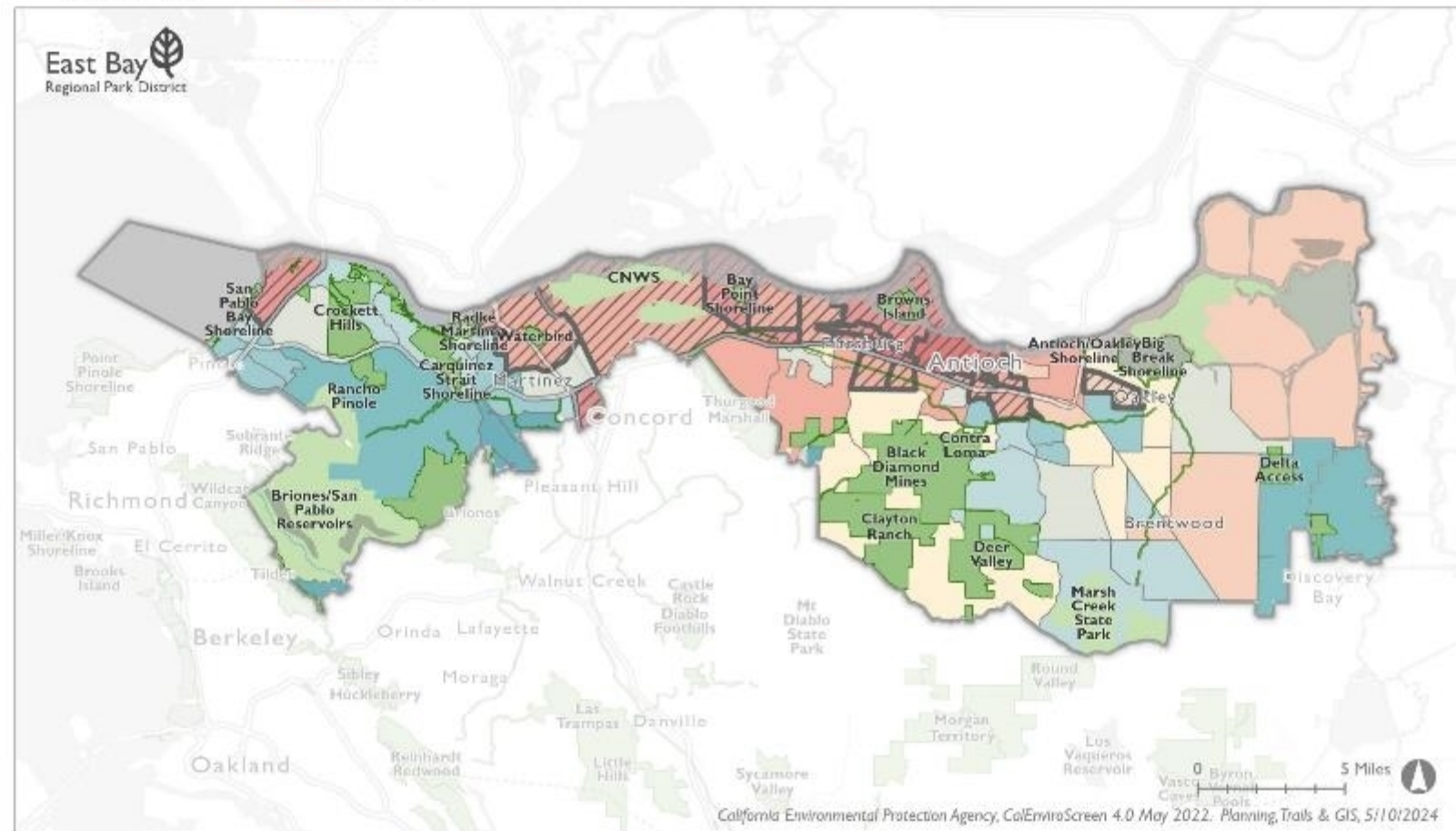
U.S. Census Bureau's American Community Survey (ACS) 2018-2022 5-year estimates, Table(s) B19013, Tracts. Planning, Trails & GIS, 5/10/2024

# WARD REPORTS

- Summary of major facilities, resources, governance, etc. within each Ward;
- Background information for Board members, consultant team, and 2DCP
- Use for ongoing Board/PAC/staff onboarding information



**Ward 7**

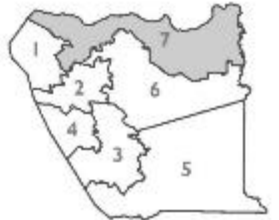




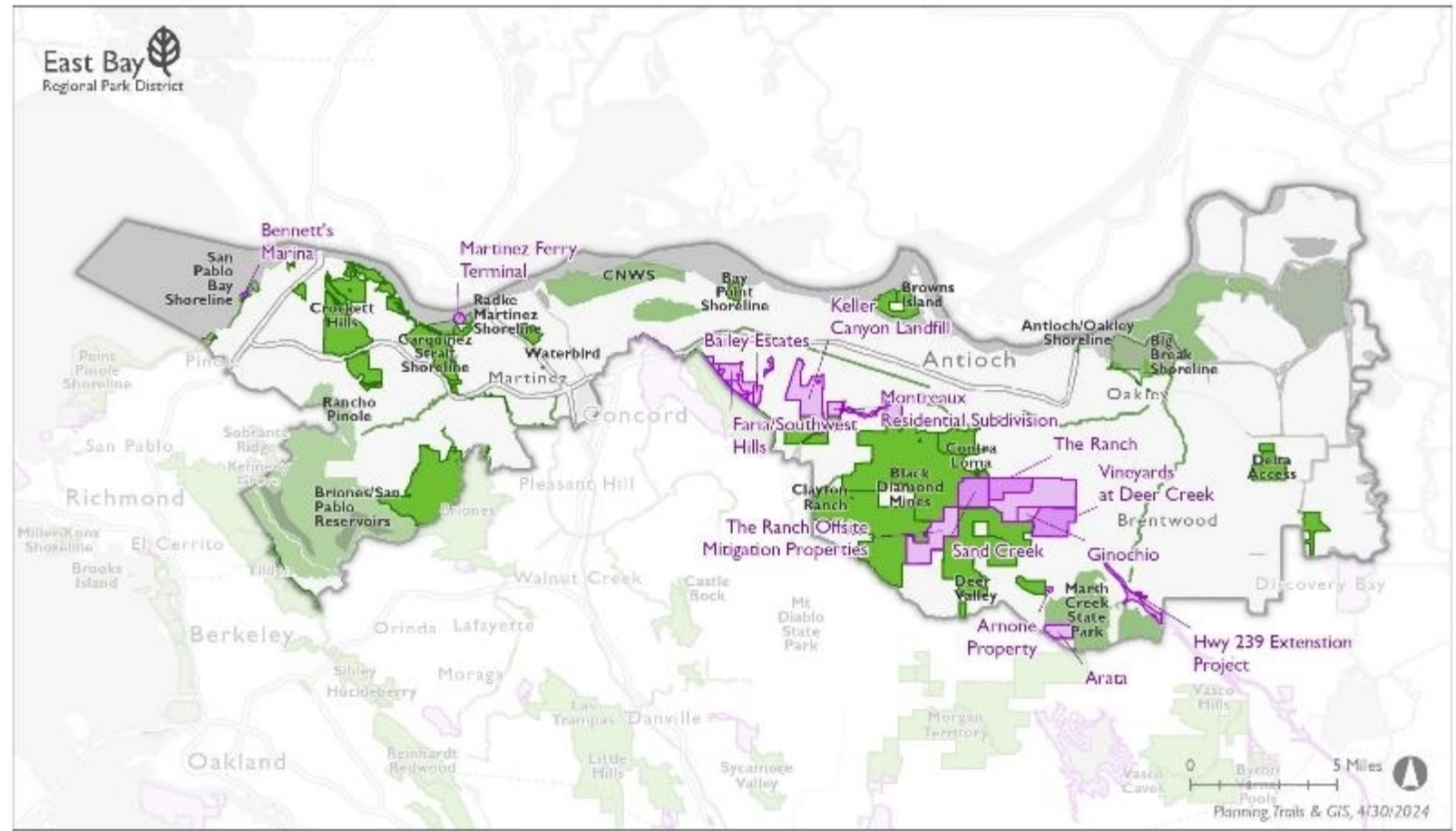
# WARD REPORTS

- Summary of major facilities, resources, governance, etc. within each Ward;
- Background information for Board members, consultant team, and 2DCP
- Use for ongoing Board/PAC/staff onboarding information

- EBRPD Regional Trail
- EBRPD Parkland
- Other Open Space
- Development Activity



**Ward 7**



# SECOND CENTURY DISTRICT PLAN NEXT STEPS



## Ongoing

- Continued Staff Engagement
- Recreation/Conservation Lands Analysis
- Ward Reports
- Background Papers
- Trails Strategic Plan
- Capital Project Prioritization

Ongoing

## Phase II

- Further Community and Agency Engagement
- Stakeholder and Community Leader Meetings
- Prioritization of Needs
- Development of Goals
- Draft 2CDP

2025

## Summer 2024

### Phase 1 Consultant Contract

- Background Information and Data Analysis
- Policy Analysis
- Budget and Funding Analysis
- Initiate Community and Agency Engagement



# 2013 MASTER PLAN



## In 2011, the Board adopted a Resolution of “Approval of Issues for 2011 Master Plan Update”

- Providing a variety of "Trails for all"
- Leading the movement for Healthy Parks Healthy People
- Affirming the role and identity of the Regional Parks
- Balancing funding priorities, meeting expectations and sound fiscal practices
- Supporting the shift to Green communities
- Developing productive partnerships
- Responding to changes in demographics
- Creating conservation and management standards for cultural and historic resources

EAST BAY REGIONAL PARK DISTRICT

RESOLUTION NO.: 2011 - 9 - 211

September 6, 2011

### APPROVAL OF ISSUES FOR THE 2011 MASTER PLAN UPDATE

WHEREAS, the East Bay Regional Park District desires to update its Master Plan by focusing on the current high priority issues of its users and constituents; and

WHEREAS, staff received input from the general public to identify these high priority issues through a scientifically valid telephone survey and the posting of the same survey questions on the Park District website for participation by any interested person; and

WHEREAS, staff has reviewed the input from the public and has developed a set of findings and recommendations which indicate that the following are the high priority issues to be addressed in the 2011 Master Plan Update:

- Providing a variety of "Trails for all"
- Leading the movement for Healthy Parks Healthy People
- Affirming the role and identity of the Regional Parks
- Balancing funding priorities, meeting expectations and sound fiscal practices
- Supporting the shift to Green communities
- Developing productive partnerships
- Responding to changes in demographics
- Creating conservation and management standards for cultural and historic resources

WHEREAS, staff presented these findings to the Park Advisory Committee for their consideration on July 25, 2011 where this list of identified issues was unanimously approved;

NOW, THEREFORE, BE IT RESOLVED, that the Board of Directors of the East Bay Regional Park District hereby approves the identified list of issues for the 2011 update of the Master Plan; and

BE IT FURTHER RESOLVED that the General Manager is hereby authorized and directed, on behalf of the District and in its name, to execute and deliver such documents and to do such acts as may be deemed necessary or appropriate to accomplish the intentions of this resolution.

Moved by Director Siden, seconded by Director Radke, and approved this 6th day of September, 2011, by the following vote:

FOR: Whitney Dotson, Ted Radke, Carol Severin, Doug Siden, John Sutter,  
Ayn Wieskamp.  
AGAINST: Beverly Lane.  
ABSTAIN: None.  
ABSENT: None.

*Beverly Lane*  
Beverly Lane, Board President

**CERTIFICATION**  
I, Allen Pulido, Clerk of the Board of Directors of the East Bay Regional Park District, do hereby certify that the above and foregoing is a full, true and correct copy of Resolution No. 2011-9-211 adopted by the Board of Directors at a regular meeting held on Sept. 6, 2011.  
*Allen Pulido*

# PROVIDING A VARIETY OF "TRAILS FOR ALL"

## GOALS, ISSUES & SOLUTIONS

EAST BAY REGIONAL PARK DISTRICT  
TRAIL USERS WORKING GROUP



A Summary of Concepts  
for New Trail Development

March 2022



## Since 2013...

### New Projects

- Trail User Working Group
- Briones Pilot Project
- Crockett Hills Bike Optimized Trails
- Iron Horse Trail – Dublin BART
- Marsh Creek Trail – Concord Avenue
- SF Bay Trail (8.5 miles – 5 built, 3.5 planned)
- Iron Horse Trail – Pleasanton BART connection
- San Francisco Bay Trail segments
  - Pinole Shores to Bayfront Park, Lone Tree Point, Doolittle Drive in MLK Jr. Shoreline, Dotson Family Marsh to Point Pinole,
- Pleasanton Ridge (3 miles)

### New Policy

- E-Bike allowed on all bike allowed trails



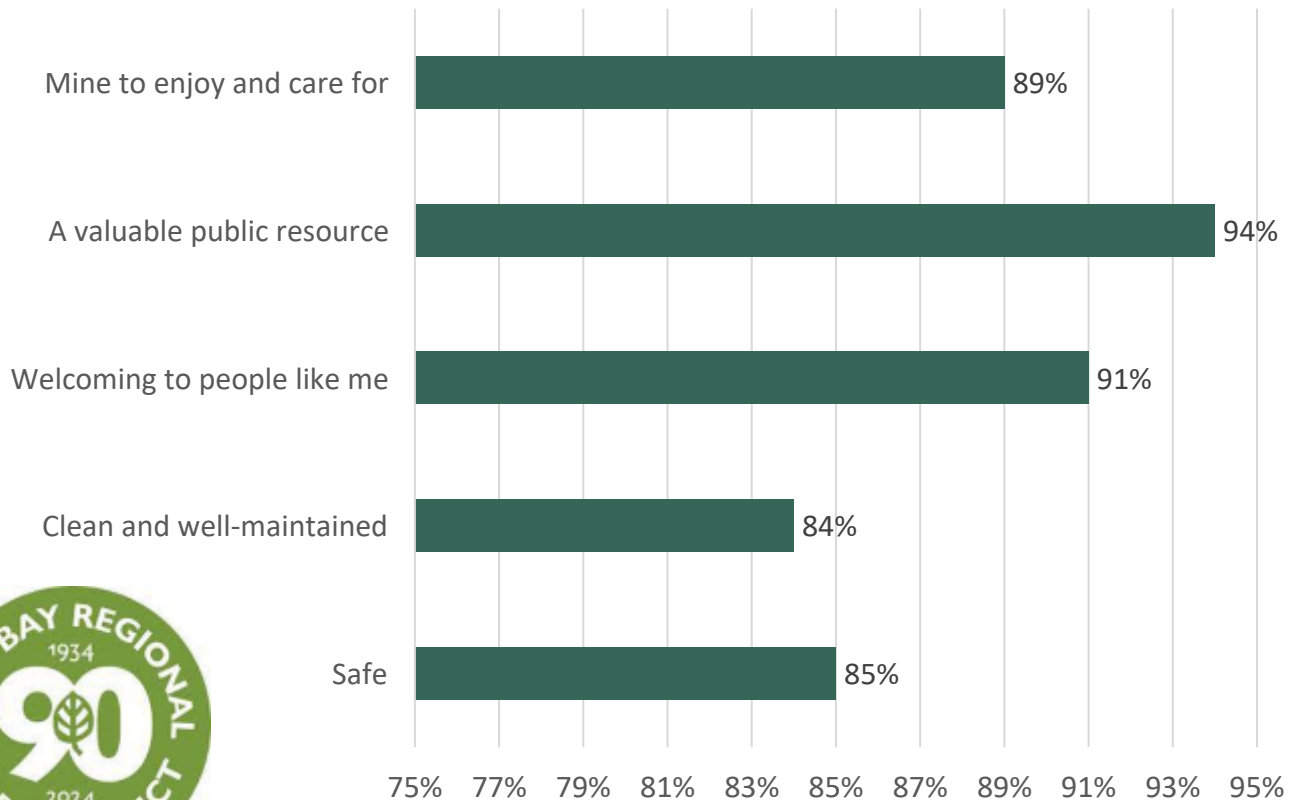
# LEADING THE MOVEMENT FOR HEALTHY PARKS/HEALTHY PEOPLE

- Healthy Parks Healthy People Initiative
  - Park Rx: prescribing nature as a preventative intervention for chronic illnesses
  - SHINE (Stay Healthy in Nature Everyday)
  - Developed and expanded transportation to/from parks
  - Multicultural Wellness Programs (Wellness Walks, International Day of Peace, etc)
  - Annual Trails Challenge
  - Kids Healthy Outdoor Challenge

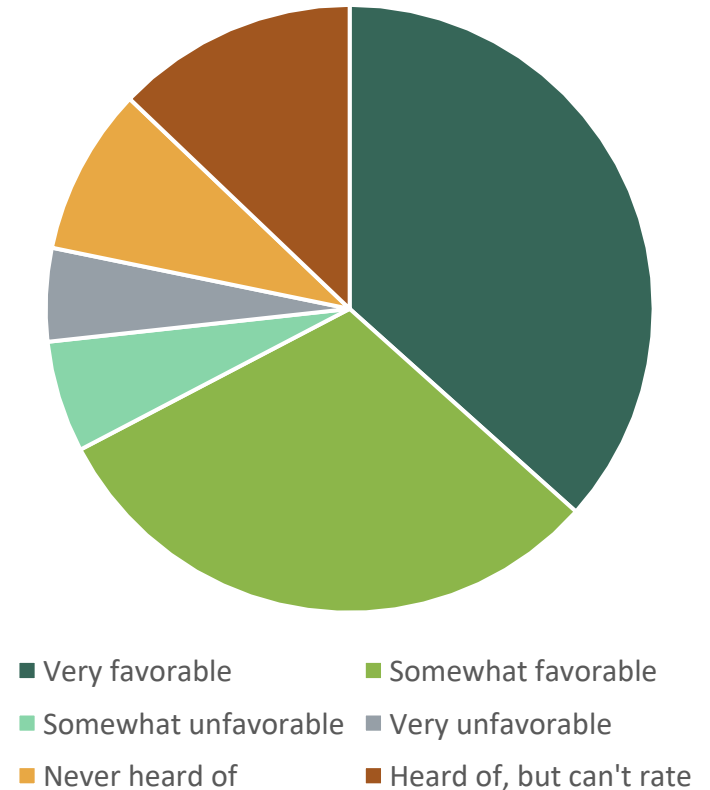


# AFFIRMING THE ROLE AND IDENTITY OF THE REGIONAL PARKS

Phrases which well describe the East Bay Regional Park District\*



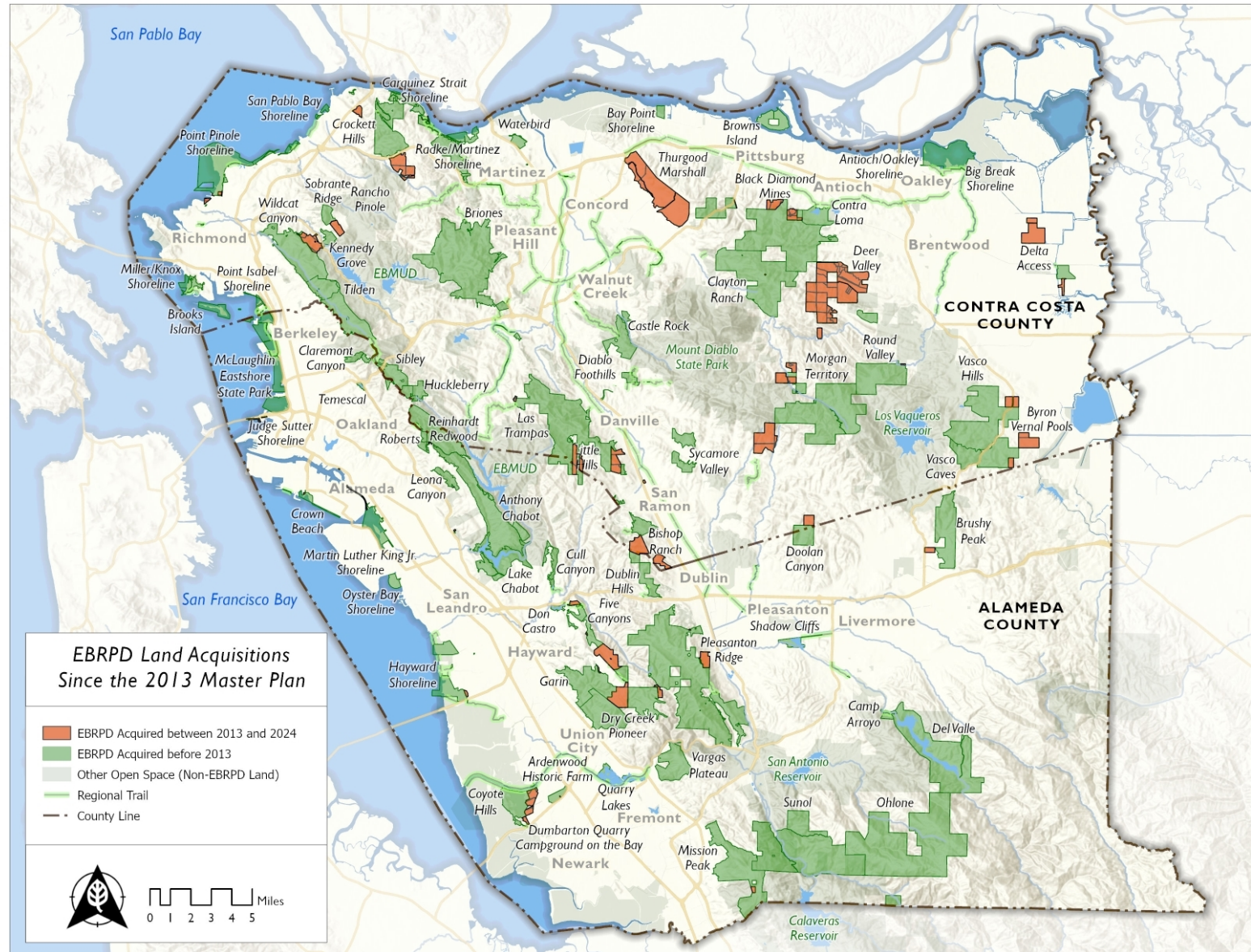
Public opinion of the East Bay Regional Park District\*





# BALANCING FUNDING PRIORITIES, MEETING EXPECTATIONS AND SOUND FISCAL PRACTICES

- Measure WW
  - \$500M to “expand regional parks and trails, and to preserve and protect open space for recreation and wildlife habitat.”
- New acquisitions:
  - Alameda County: 1,955 acres
  - Contra Costa County: 11,200 acres
- New parks:
  - Thurgood Marshall
  - John Sutter





# BALANCING FUNDING PRIORITIES MEETING EXPECTATIONS AND SOUND FISCAL PRACTICES

## Measure CC

- \$3M annually (2004-2020)
- Native habitat restoration, fire reduction, facility upgrade
- Public Safety
  - Eucalyptus thinning
- Operations and Improvements
  - Crab Cove Visitor Center
  - Tilden Merry Go Round
- Infrastructure
  - 34 new toilets, 200+ new picnic tables
  - Public Access
  - Golden Gate Fields Bay Trail Extension
- Habitat Preservation
  - 100+ acres of restored grasslands





# EXPECTATIONS AND SOUND FISCAL PRACTICES

Year	FTE added	TOTAL FTE
2014	9.6	737.3
2015	21.2	758.5
2016	19.5	778.1
2017	21.2	799.3
2018	22.6	821.9
2019	27.9	849.8
2020	27.5	877.3
2021	12.4	889.7
2022	36.8	926.5
2023	40.3	966.8
2024	11.8	978.6
<b>TOTAL</b>	<b>250.9</b>	

- 250+ new Full Time Employees added since 2013
- 300+ grant awards totaling \$233.4 million (2013-2023)
  - \$3.5 million grant for new helicopter
  - \$4 million grant from Caltrans for Doolittle Bay Trail
  - \$4.5 million Per Capita grant – funded four different capital improvement projects
  - \$5 million grant Del Valle Infrastructure improvements
  - \$5 million for Brickyard Cove Development
  - \$7 million Coastal Conservancy grant for Finley Ranch Road acquisition
  - \$10 million grant for tree die-off at Anthony Chabot
  - \$36 million for the acquisition and development of Pt Molate



# SUPPORTING THE SHIFT TO GREEN COMMUNITIES



## ○ Climate Smart Actions

- Green Bonds (2017-current)
- Stewardship Annual Reports (2018-current)
- Carbon Sequestration Study Update (2016)
- Strategic Energy Plan (2014)

## ○ Climate-related State and Federal Initiatives

- State | California Natural Resources Agency (CNRA) | ***Pathways to 30x30*** CNRA | ***Outdoors for All***
- State | CNRA | ***Natural and Working Lands Climate Smart Strategy***
- State | California Department of Fish and Wildlife | ***State Wildlife Action Plan***
- State | California Wildfire & Forest Resilience Task Force | ***California's Wildfire and Forest Resilience Action Plan***
- Federal | U.S. Department of the Interior | ***America the Beautiful***
- Federal | ***Inflation Reduction Act***
- Federal | ***Bipartisan Infrastructure Law***

Thinking  
Outside  
the  
Box

East Bay  
Regional Park District





# SUPPORTING THE SHIFT TO GREEN COMMUNITIES



- **Fuel Management** and Wildfire Prevention
- Shadow Cliffs Regional Recreational Area **Solar Panels**
- Dotson Marsh **Wetland Restoration** at Point Pinole Regional Shoreline
- Native Redwood **Grove Preservation**
- **Disease Prevention and Biodiversity** at the Botanic Gardens located in Tilden Regional Park
- **Gas to Electric** Powered Tools Replacement Program
- **Grazing** in our Parklands



# DEVELOPING PRODUCTIVE PARTNERSHIP S



- **City of Richmond** partnership to build 2.5-miles of Bay Trail at Pt Molate
- Since 2013, the **Environmental Protection Agency** has provided grant funding to five projects totaling \$6 million.
- Since 2013, approx. \$20 million in grant funding **from ECCC Habitat Conservancy** for acquisitions, restoration work, and stewardship studies
- Secured approx. \$10 million in grant funds from multiple agencies for the **McCosker Creek Restoration Project**
- Since 2018, six grant awards from the **SF Bay Restoration Authority** totaling \$6,275,000



# RESPONDING TO CHANGES IN DEMOGRAPHICS



- Systematically identified **untold histories** related to diverse communities and integrated these into exhibits, programming, and school field trips
- Hired first **Equity Officer**
- **Celebration** of Juneteenth, Black History Month, Women's History Month, AAPI Heritage Month, and LGBTQ+ Pride Month
- Expanded **print and online presence** to engage a growing, more diverse, cross-generational population
- **Accessible website**, social media accounts, in multiple languages via website, brochures, signage, and exhibits



# CREATING CONSERVATION AND MANAGEMENT STANDARDS FOR CULTURAL AND HISTORIC RESOURCES

- Creation of Cultural Resources Unit
- NatureCheck study (2022) – Quantitative metrics to evaluate ecological health
- 30x30 :
  - Increasing Pace and Scale of Restoration
  - Improving Equity of Access
  - Protecting Biodiversity
- Conservation Lands Program
  - 14,500 acres acquired via ECCC Habitat Conservancy partnership
  - Preserve management plans provide framework for ongoing land management and passive recreation that meets habitat conservation goals.





# TRIBAL MONITORS

- Tribal Monitors
  - PG&E
  - Fuels Reduction Projects
  - Pt. Molate Bay Trail Project
  - Coyote Hills Public Access & Restoration Project
- Ability to identify and protect tribal resources during project implementation
- Provides a (re)connection between tribal citizens and their ancestral lands





# HERITAGE PROTECTION PROGRAM

- Active protection of tribal sites and sacred areas from:
  - Uncontrolled access
    - Vasco Caves
    - Brushy Peak
  - Impacts of Climate Change
    - Coastal Erosion
    - Increased Wave Action
    - Droughts
    - Wildfire
  - Vandalism





# 2013 MASTER PLAN



## In 2011, the Board adopted a Resolution of “Approval of Issues for 2011 Master Plan Update”

- Providing a variety of "Trails for all"
- Leading the movement for Healthy Parks Healthy People
- Affirming the role and identity of the Regional Parks
- Balancing funding priorities, meeting expectations and sound fiscal practices
- Supporting the shift to Green communities
- Developing productive partnerships
- Responding to changes in demographics
- Creating conservation and management standards for cultural and historic resources

EAST BAY REGIONAL PARK DISTRICT

RESOLUTION NO.: 2011 - 9 - 211

September 6, 2011

### APPROVAL OF ISSUES FOR THE 2011 MASTER PLAN UPDATE

WHEREAS, the East Bay Regional Park District desires to update its Master Plan by focusing on the current high priority issues of its users and constituents; and

WHEREAS, staff received input from the general public to identify these high priority issues through a scientifically valid telephone survey and the posting of the same survey questions on the Park District website for participation by any interested person; and

WHEREAS, staff has reviewed the input from the public and has developed a set of findings and recommendations which indicate that the following are the high priority issues to be addressed in the 2011 Master Plan Update:

- Providing a variety of "Trails for all"
- Leading the movement for Healthy Parks Healthy People
- Affirming the role and identity of the Regional Parks
- Balancing funding priorities, meeting expectations and sound fiscal practices
- Supporting the shift to Green communities
- Developing productive partnerships
- Responding to changes in demographics
- Creating conservation and management standards for cultural and historic resources

WHEREAS, staff presented these findings to the Park Advisory Committee for their consideration on July 25, 2011 where this list of identified issues was unanimously approved;

NOW, THEREFORE, BE IT RESOLVED, that the Board of Directors of the East Bay Regional Park District hereby approves the identified list of issues for the 2011 update of the Master Plan; and

BE IT FURTHER RESOLVED that the General Manager is hereby authorized and directed, on behalf of the District and in its name, to execute and deliver such documents and to do such acts as may be deemed necessary or appropriate to accomplish the intentions of this resolution.

Moved by Director Siden, seconded by Director Radke, and approved this 6th day of September, 2011, by the following vote:

FOR: Whitney Dotson, Ted Radke, Carol Severin, Doug Siden, John Sutter, Ayn Wieskamp.

AGAINST: Beverly Lane.

ABSTAIN: None.

ABSENT: None.

*Beverly Lane*  
Beverly Lane, Board President

#### CERTIFICATION

I, Allen Pulido, Clerk of the Board of Directors of the East Bay Regional Park District, do hereby certify that the above and foregoing is a full, true and correct copy of Resolution No. 2011-9-211 adopted by the Board of Directors at a regular meeting held on Sept. 6, 2011.

*Allen Pulido*