



# Trails Study Session

March 1, 2024

Sean Dougan, Trails Program Manager

Robert Kennedy, Chief of Maintenance & Skilled Trades

Captain Terrence (Joe) Cotcher, Public Safety



# Introduction

## Board Study Session Agenda

1. Trail Development, Maintenance & Management Overview
  - a. 2024 Trail Project Updates
  - b. Planning / RFPs
  - c. Briones Pilot Project Schedule
  - d. Trail Inventory and Data collection
2. Trail Maintenance & Operations Overview
  - a. MAST Role and Overview
  - b. Roads & Trails Crew
  - c. Small Trails Crew
3. Trail Management & Public Safety Overview
  - a. Public Safety Response Model
  - b. Bicycle Incidents and Enforcement Statistics

# Introduction

## Board Study Session Discussion Topics

### Discussion Topics

- a. What is your biggest concern regarding Park District trails?
- b. Which of the three elements (Development, Maintenance, or Management) should the Park District invest in most?



# Trail Development, Maintenance and Management Overview

Sean Dougan, Planning, Trails & GIS





# Trails Development, Maintenance & Management

## Trail Types the Park District Manages



Unpaved Roads / Fire Roads



Natural Surface Trails / Singletrack



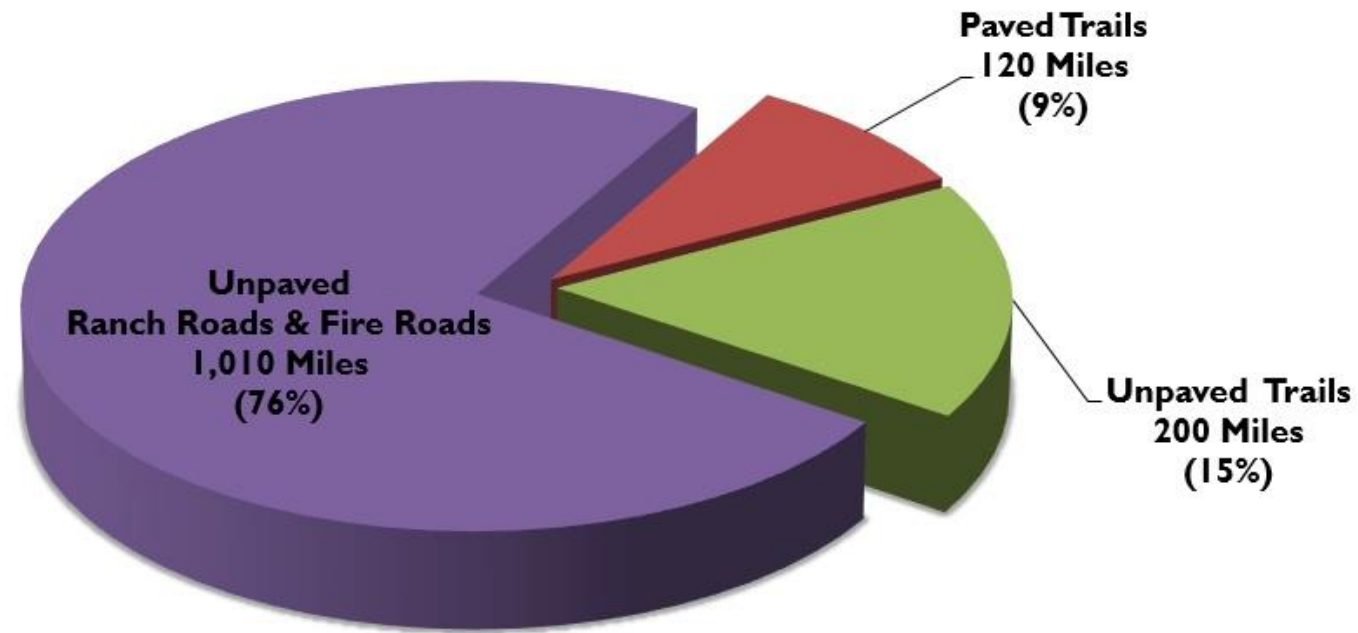
Paved Regional Trails



# Introduction

## Trail Type Distribution

**Trails and Roads**  
**Operated by the East Bay Regional Park District**  
**Mileage by Type**  
Total = 1,330 Miles\*



# Trails Development

## 2024 Project Updates

- Pt. Molate Bay Trail
- Pleasanton Ridge Trails Update
- SF Bay Trail: Martinez
- RFP's to be released in 2024:
  - IHT Lower Walnut Creek
  - Calaveras Ridge Trail CEQA
  - Wildcat Flow Trail CEQA
- Briones Pilot Project Schedule
- Trail Inventory and Data Collection Efforts



# Trail Project Updates (ESRI Story Map)

Sean Dougan, Planning, Trails & GIS

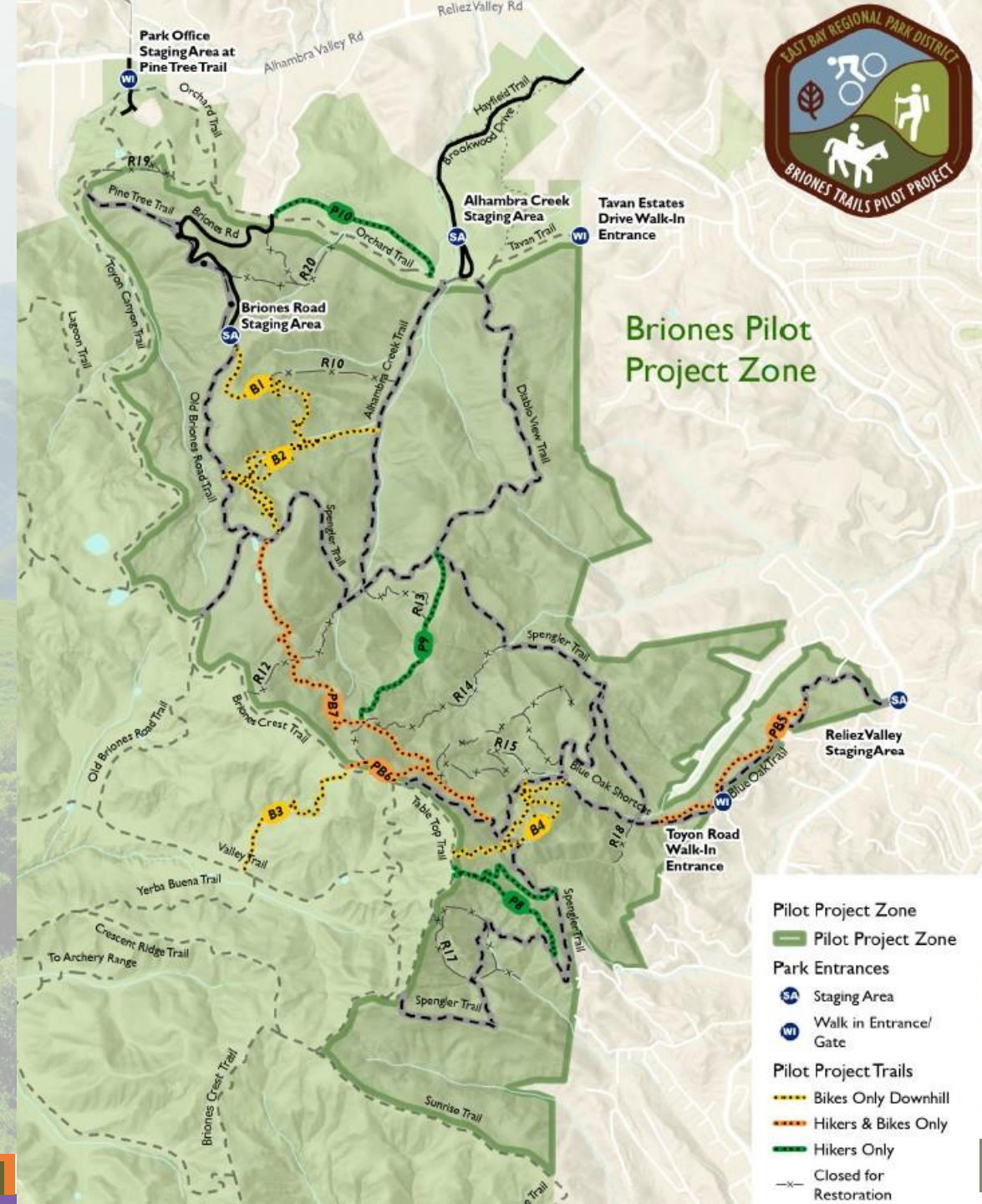




# Briones Pilot Project

## A Two-Year Study

- Community Meeting - May 2024
- Tabling and Volunteer events
- Final community survey fall 2024
- Trail Inventory
- December 4, 2024, Board Executive Committee





# Trail Inventory

## Pleasanton Ridge, Briones, and Del Valle

The following data attributes will be recorded during field surveys:

- Identification of immediate health or safety hazards and immediate maintenance needs
- Trail classification (e.g., 1 = minimally developed to 5 = developed<sup>1</sup>);
- Bootleg trails category (e.g., game path, recreational trail, natural, constructed) \*;
- Status (e.g., legal vs. illegal bootleg) \*;
- Mileage/spatial location;
- Average width of road (e.g., greater than 8 feet) or Trail (e.g., less than 8 feet);
- Type (road or trail);
- Surface (e.g., dirt, asphalt) \*;
- Access Allowed (e.g., hiker, biker, equestrian, dog, etc.);
- Direction of travel (e.g., two-way, uphill only, downhill only);
- Grade\*;
- Brief (<255 characters) descriptions of bootleg trails\*;
- Trail/drainage features, stream-crossing structures (e.g., fords, culverts, retaining walls, punchions, bridges, turnpikes, causeways, berms and banked turns, gates, railings/fences, etc.) \*;
- Signage/informational panels/benches/interpretive signs plus photos and condition\*;
- Confirm and/or map trail bridges (Type, width)\*

<sup>1</sup>Range and categories listed above are for example purposes only. The actual ranges and categories included in the protocol will be developed during project implementation.

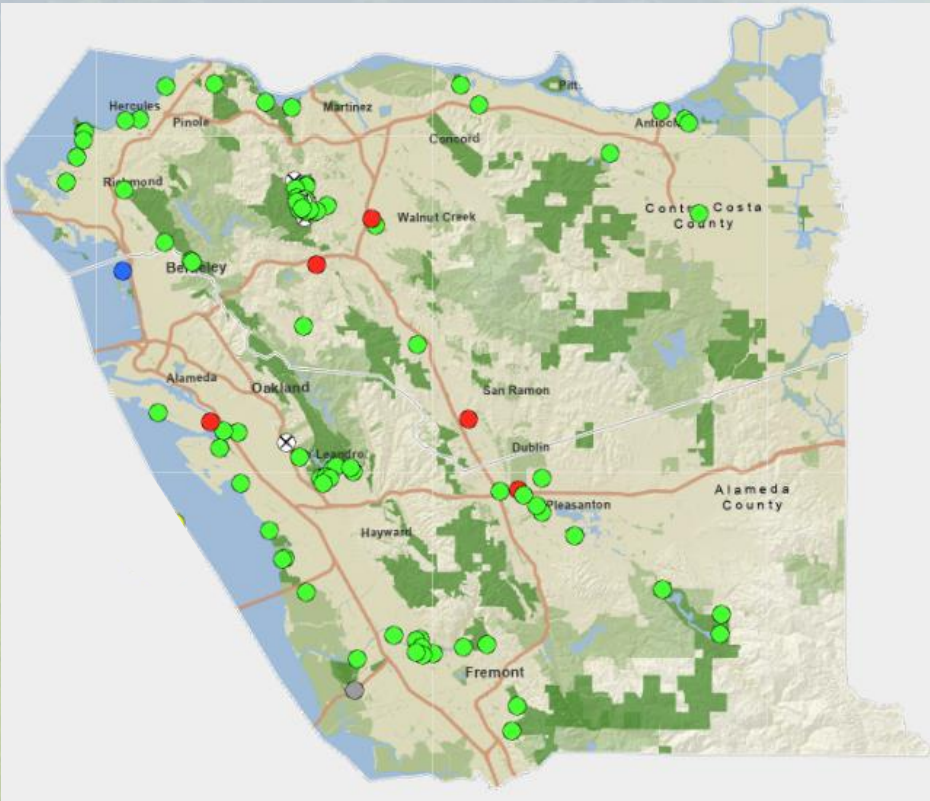
\*Indicates data attributes that will likely require site visits to verify.



# Trails Management

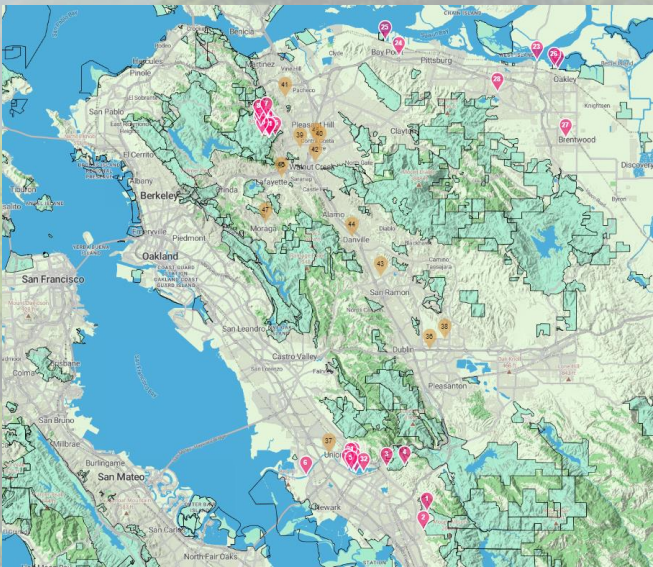
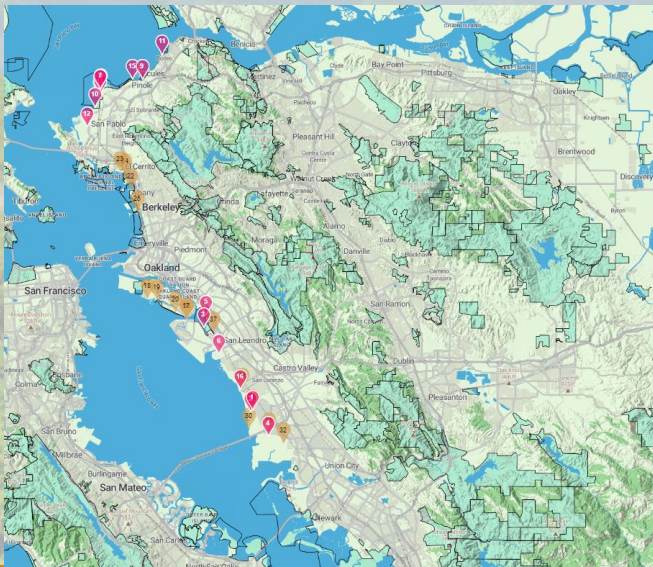
## Data Collection – Trail Counters

### Park District Trail Counters



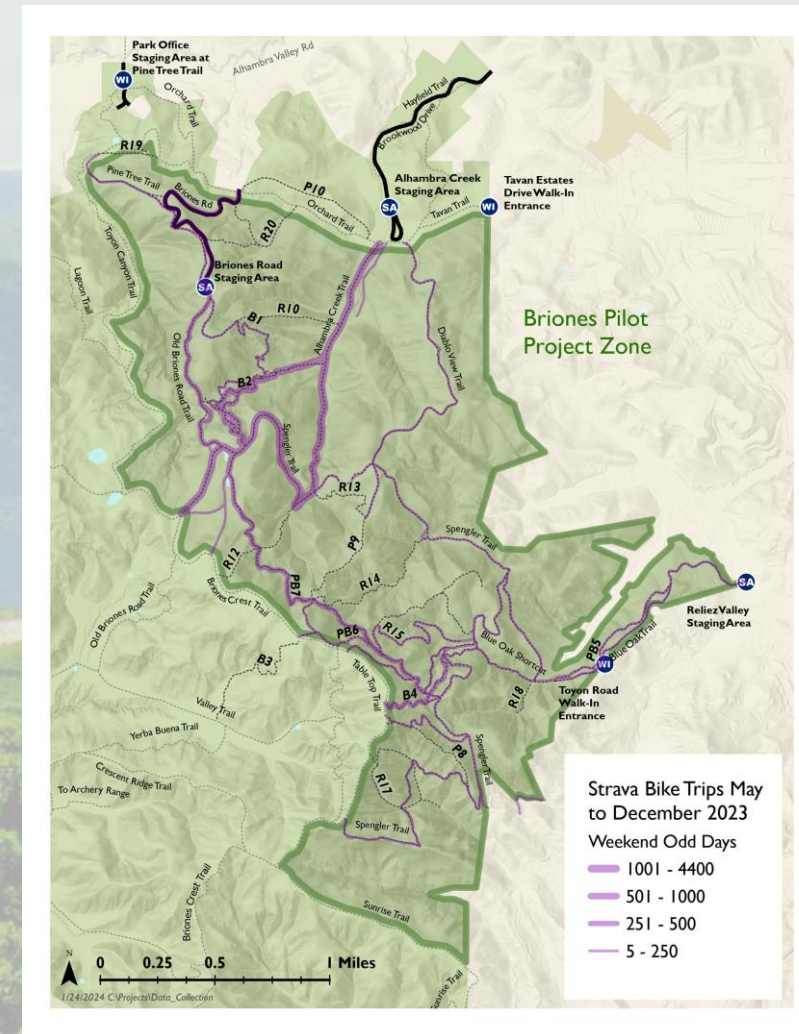
### Eco-Counters

### TrafX (Parklands & Shoreline)





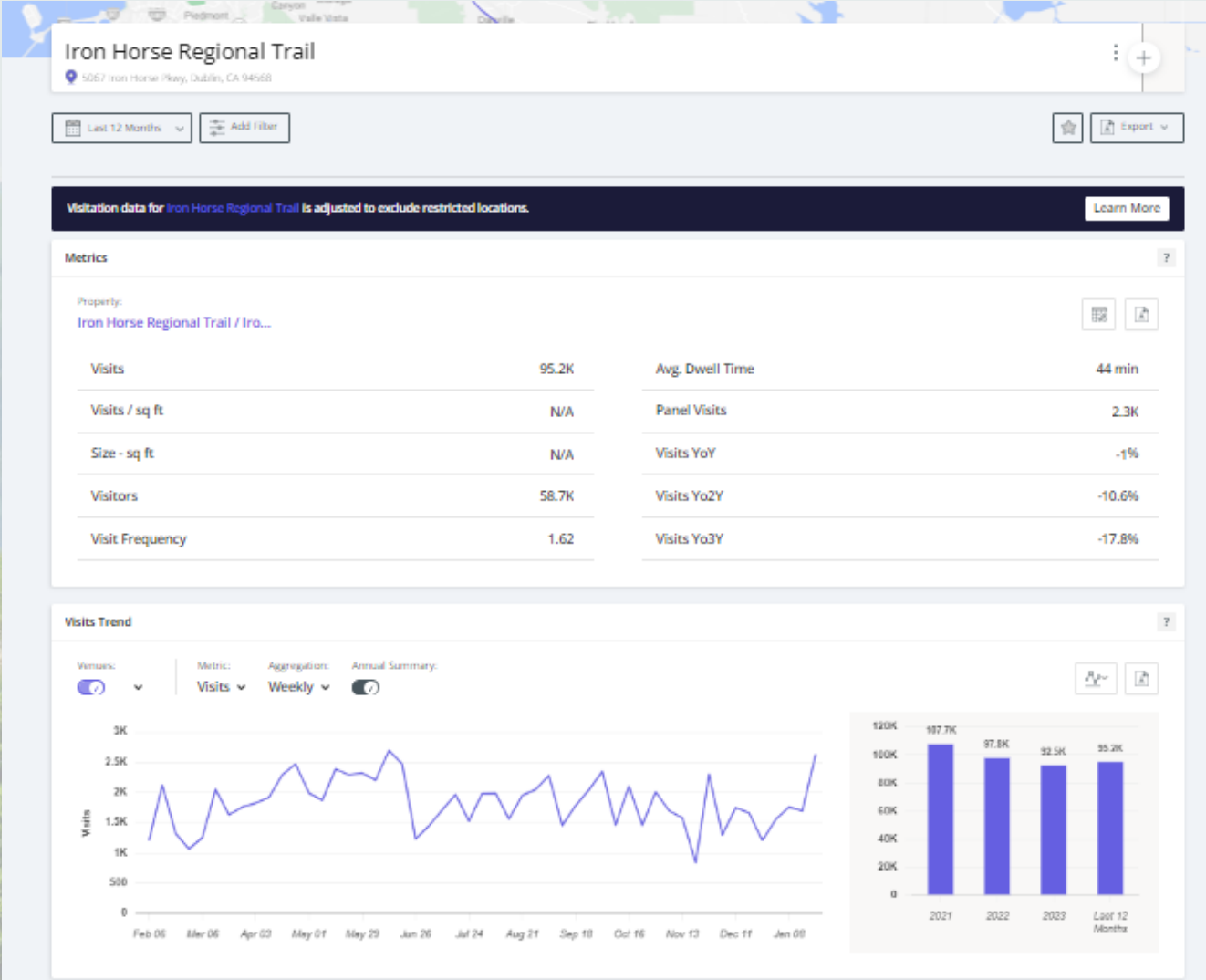
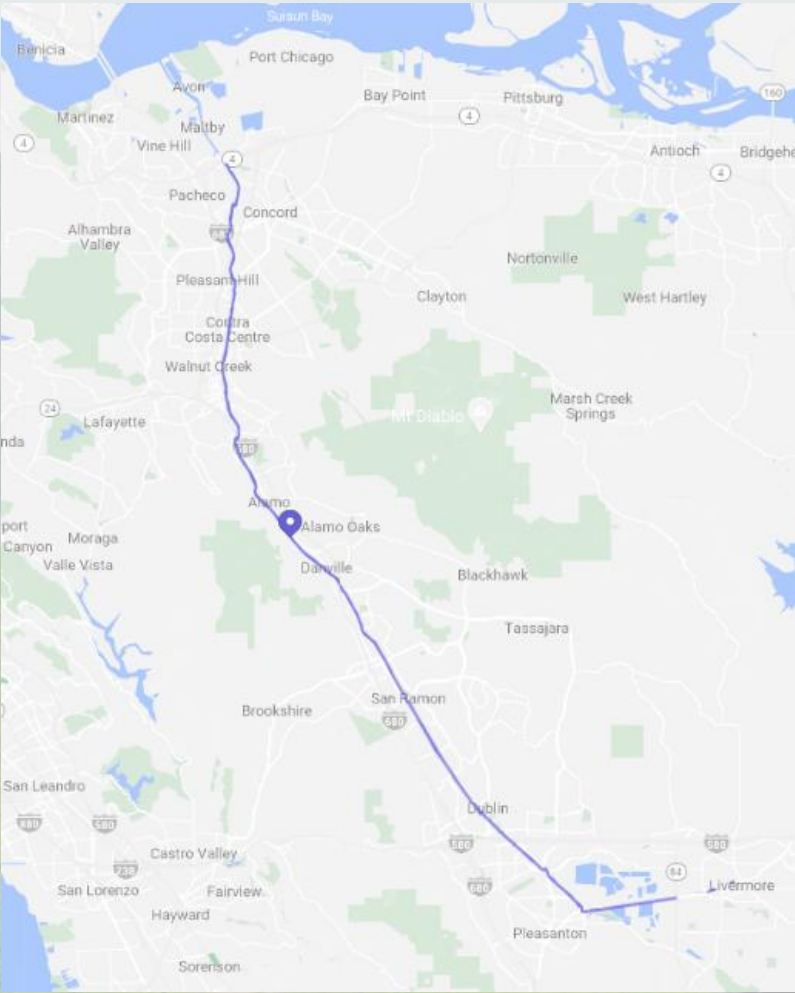
## Data Collection - Crowd Sourced Data





# Trails Management

## Data Collection - Big Data / AI





# Trails Management

## Data Collection – Public Survey & Sampling

### Community Surveys

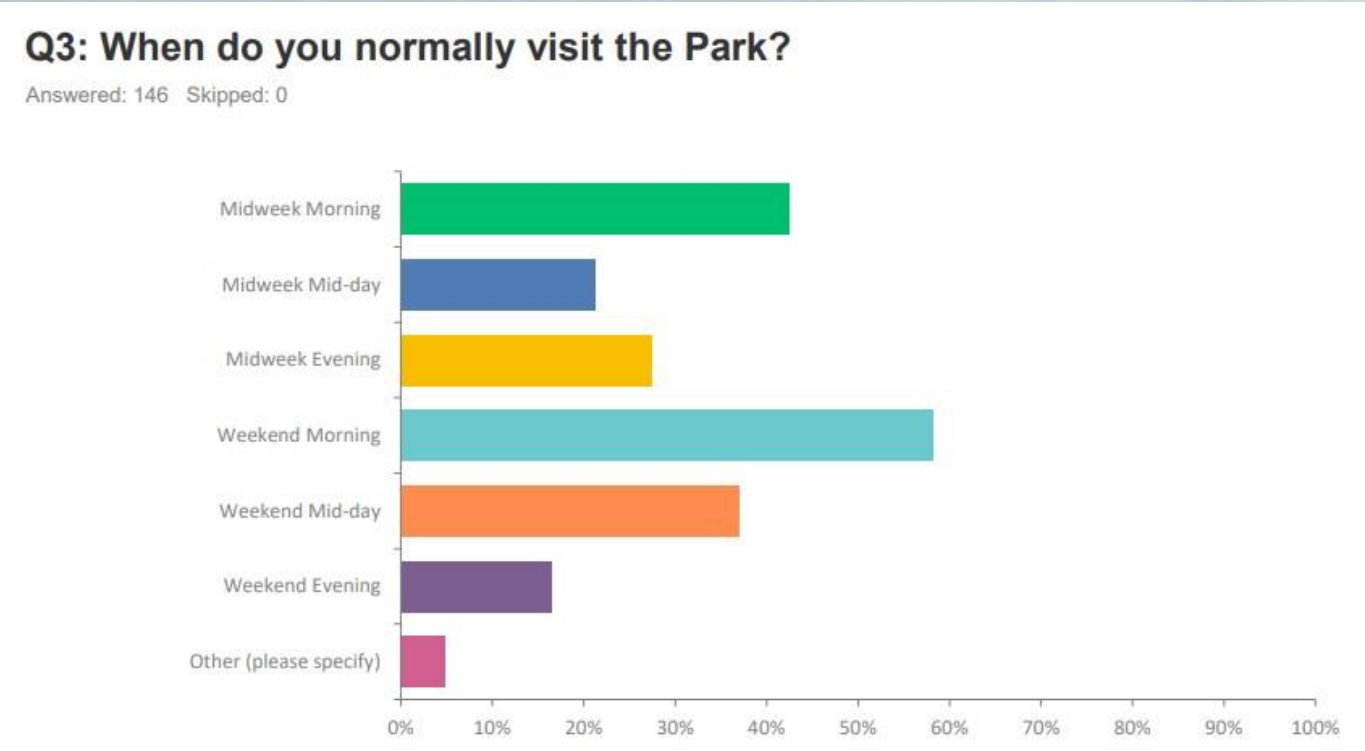


Figure 20  
EBRPD Trail Users Survey  
Summer 2017

### Suggestions for Enhancing EBRPD Network of Trails

Q23 : What suggestions do you have for enhancing the EBRPD's network of regional trails. (Top five)

