



Figure 2: Alternative Day Use  
- Absolute Change (Bike Use  
on Bike Only Day)

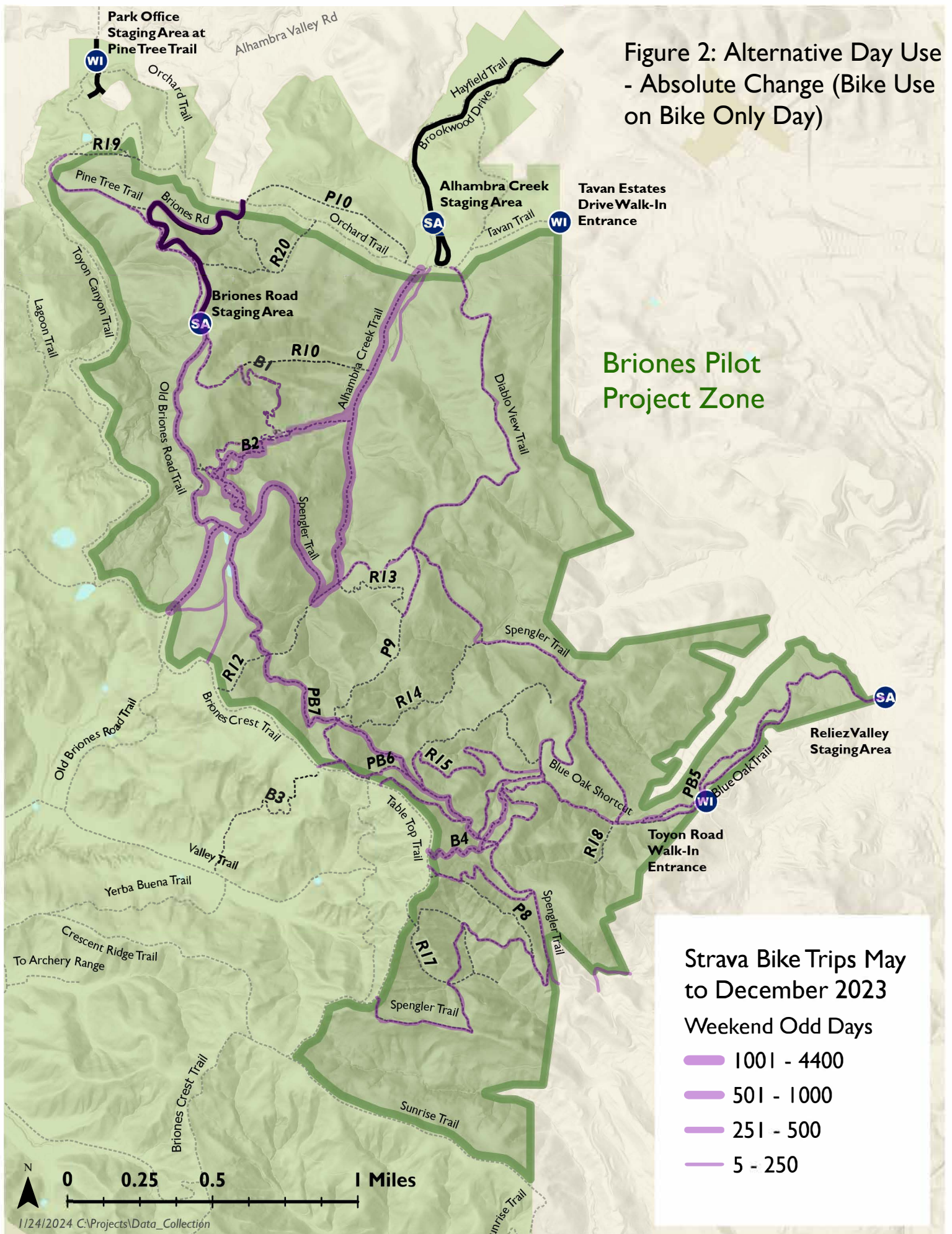




Figure 3: Alternative Day Use - Percentage Change (Bike Use on Horse Only Day)

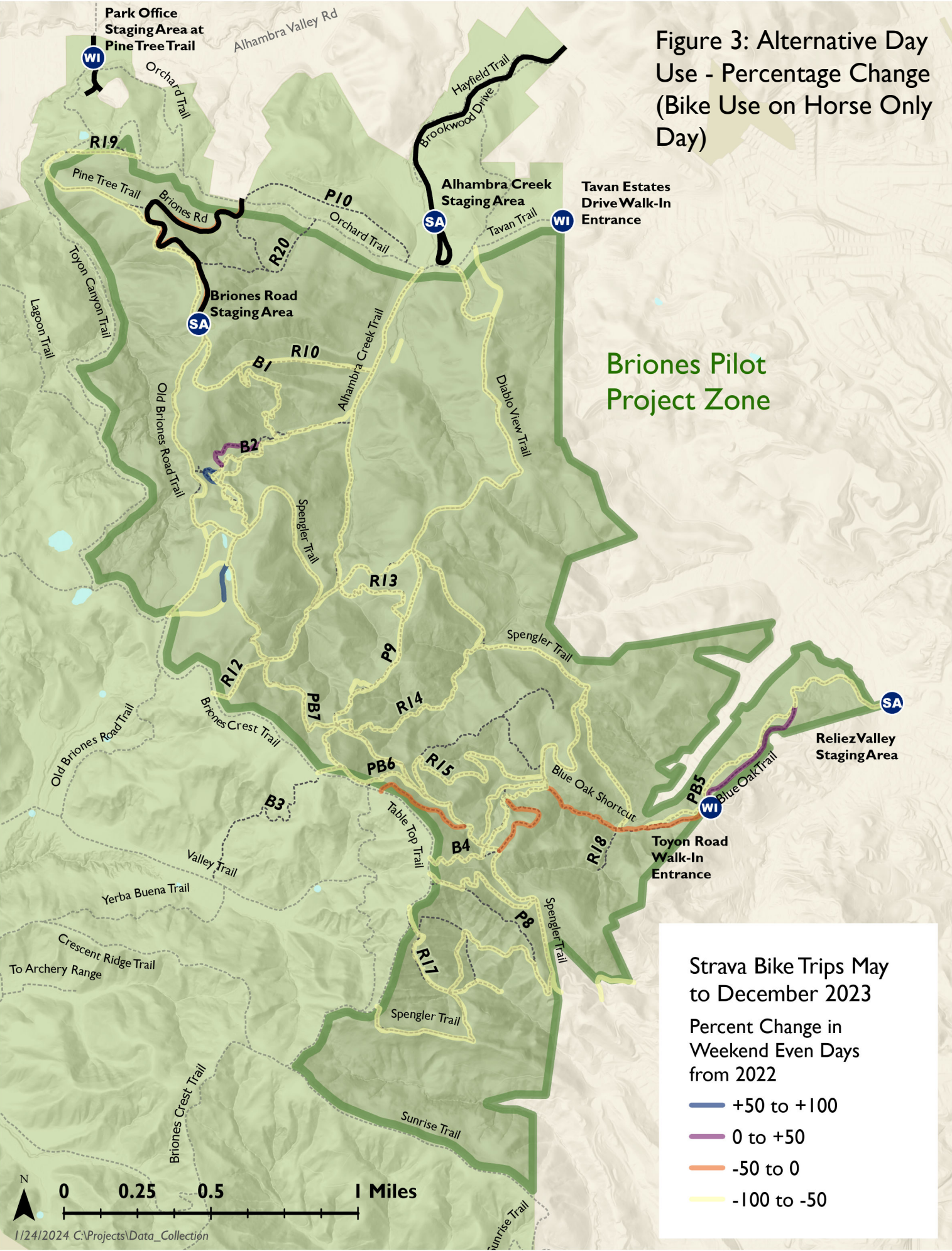
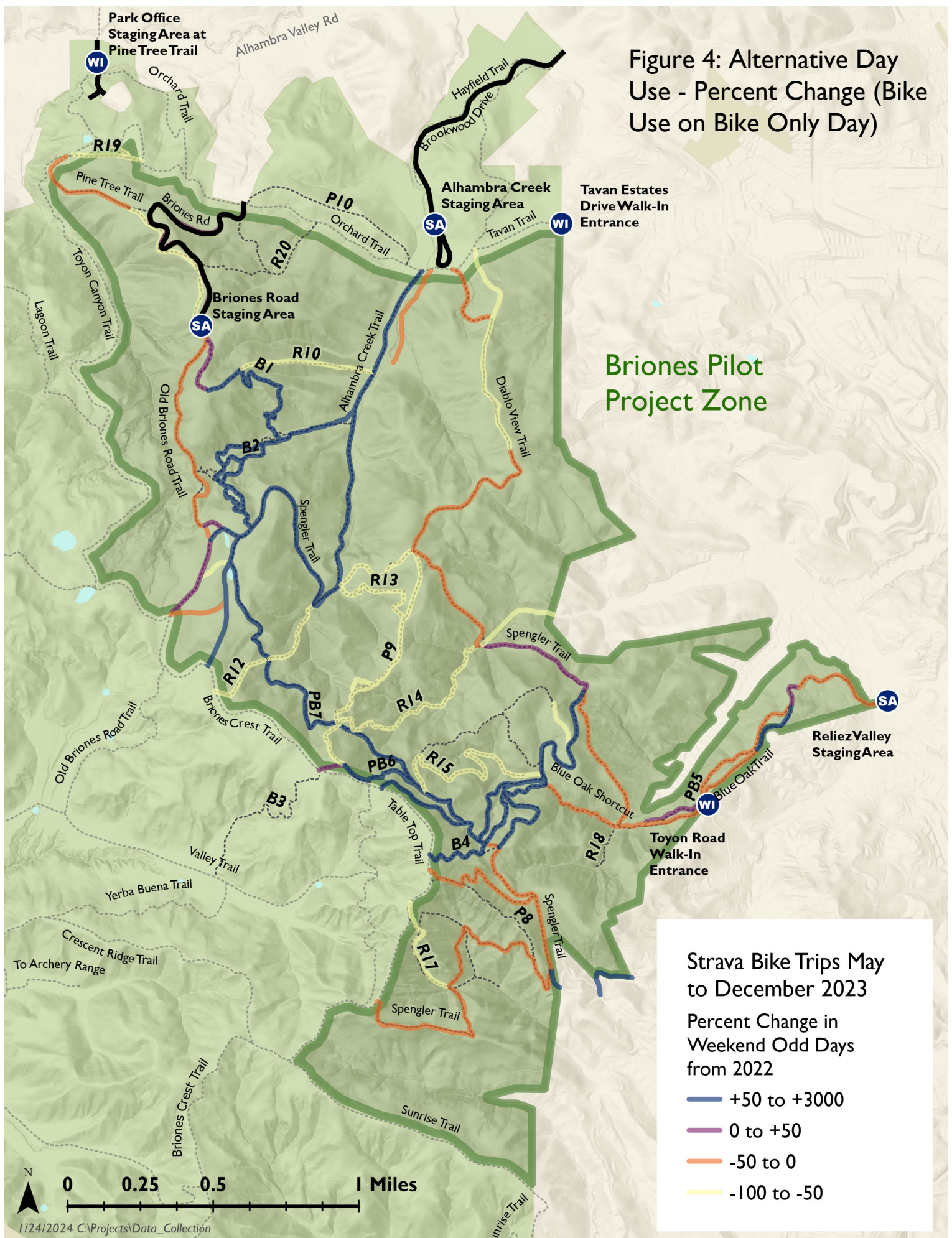




Figure 4: Alternative Day Use - Percent Change (Bike Use on Bike Only Day)



## Goal # 2: Close and Restore Designated Bootleg Trails

Trail Adoption Recommendations from Briones Pilot Project			
Trail Name	Pilot Name	Trail Type	Miles Totals
Curl of the Burl	B1	Bicycle single use directional	0.71
Hank & Frank	B2	Bicycle single use directional	1.37
Isaac's	B3	Bicycle single use directional	0.56
Radio Tower>Texas Toast>Blue Oak Stoke	B4	Bicycle single use directional	0.93
<b>Bicycle single use directional</b>			<b>3.57</b>
Reliez Valley Trail	PB5	Hiker & Bicycles Only	0.6
Traverse Connector	PB6	Hiker & Bicycles Only	0.29
Lagoon Traverse	PB7	Hiker & Bicycles Only	1.3
<b>Hiker &amp; Bicycles Only</b>			<b>2.19</b>
Echo Springs Ridge Trail	P8	Pedestrian only both directions	0.53
Desert Trail	P9	Pedestrian only both directions	0.75
Orchard Ridge Trail	P10	Pedestrian only both directions	0.6
<b>Pedestrian only both directions</b>			<b>1.28</b>
<b>TOTAL NEW TRAIL</b>			<b>7.04</b>
	R10	Close & Restore	0.36
	R12	Close & Restore	0.42
	R13	Close & Restore	0.36
	R14	Close & Restore	0.78
	R15	Close & Restore	1.36
	R17	Close & Restore	0.72
	R18	Close & Restore	0.14
	R19	Close & Restore	0.26
	R20	Close & Restore	0.59
<b>Close &amp; Restore</b>			<b>4.99</b>
<b>GRAND TOTAL</b>			<b>12.02</b>

*Table 1: Trail Adoption Recommendations from Briones Pilot Project*

### Goal # 3: Increase Trail Volunteerism to Assist with Restoration and Maintenance

Briones Pilot Dig Day Totals:			
Years	Events	Volunteers	Hours
2023	6 Community Dig Days:	140	882
	5 SOB Dig Days:	48	376
2024	5 Community Dig Days:	154	820
	7 SOB Dig Days:	47	378
<b>Total</b>	<b>23 Events</b>	<b>389</b>	<b>2456</b>

*Table 2: Briones Pilot Dig Day Totals:*

Briones Pilot Project Restoration Log				
Trail	Work Completed	Crew	Date of Restoration	Assessments
R10	Both entrance and exit de-compacted and covered with slash from trail merge back past lien of sight from trail	CCC	May-23	7.18.23: No signs of human use. 11.12.24: No signs of human use.
R12	Decompacted tread, topped with jute netting and native debris.	Dig Days	Aug-23	7.18.23: No signs of human use. 11.12.24: no signs of human use.
R13	Tread decompacted and covered with tree limbs and other brush.	SCA	Jul-23	8.22.23: No signs of human activity. 11.12.24: No signs of human activity
R14	Exit of trail required extensive jute netting, check dams, and recontouring of side slope above where the trail crossed Grayson Creek. Top of trail was de-compacted, obscured and recontoured	CCC	May-23	8.22.23: Restoration holding. A few foot tracks noted. 11.13.24: No signs of human activity.
R15	Entrance and two least popular exits of the complex were de-compacted, covered with slash and obscured. "Dookie" alignment signed and blocked with branches.	CCC	May-23	7.18.23: No signs of human use. 11.12.24: Tracks noting limited use by hikers and cyclists observed.
R17	Crew recontouring the side slope where possible and covering the de-compacted tread with jute netting and slash	SCA	Jul-23	8.22.23: No signs of human use. 11.12.24: No signs of human activity.
R18	Trail decompacted and obscured with vegetation.	SCA	Jul-23	7.18.23: No signs of human use. 11.12.24: no signs of human activity.
R19	Signed closed, beginning tread obscured with branches.	Park Staff	Apr-23	7.18.23: Debris moved, sign damaged. 11.12.24: No signs of human use.
R20	Tread was decompacted and obscured with tree limbs and brush.	CCC	May-23	7.18.23: No signs of human use. Some cattle activity noted. 11.12.24: No signs of human activity.
P9	Incised reroute had 12 check dams installed, top and bottom tread decompacted and obscured with brush. Alternate sustainable route established.	CCC	Aug-24	8.22.23: Two bike tracks noted. 11.12.24: closed segments debris moved off trail with some foot prints noted in dirt. Additional signage needed.

*Table 3: Restoration Log for Trail Closure*

## Goal # 4: Compliance with Management Strategies and Pilot Project Rules

Briones Pilot Project Trail Counts and Compliance - November 1, 2024									
Location	Weekly Average Counts				Alternative Day Compliance			Dates	Source
	Total	Hikers	Bikers	Equestrian	Hiker	Biker	Equestrian		
Briones Pilot Project	4,515	3,703	734	78	-	81%	79%	7/17/23 - 8/20/24	Eco-Counter
Alhambra Creek	2,999	2,436	496	67	-	81%	79%	7/17/23 - 8/20/24	Eco-Counter
Old Briones	725	511	203	11	-	75%	82%	7/17/23 - 8/20/24	Eco-Counter
Reliez	791	756	35	0	-	31%	100%	7/17/23 - 8/20/24	Eco-Counter
B1	101	-	-	-	94%	70%	100%	7/17/23-7/17/24	Trafx
B2	245	21	224	-	94%	87%	100%	7/17/23-7/17/24	Camera/Trafx/Bike
B3	173	-	-	-	97%	62%	100%	7/17/23-7/17/24	Trafx
B4	162	-	-	-	98%	82%	100%	7/17/23-7/17/24	Trafx
PB5	182	-	-	-	-	91%	100%	7/17/23-7/17/24	Trafx
PB6	48	-	-	-	-	82%	100%	7/17/23-7/17/24	Trafx
PB7	167	88	79	-	-	80%	79%	7/17/23-7/17/24	Camera/Trafx/Bike
P8	24	-	-	-	-	100%	-	7/17/23-7/17/24	Trafx
P9	52	49	4	-	-	94%	-	7/17/23-1/1/25	Camera/Trafx
P10	31	-	-	-	-	99%	-	7/17/23-1/1/26	Trafx
ACHT	683	680	3	-	-	99%	-	9/4/23 - 12/4/23	Camera/Trafx
R11	0	-	-	-	100%	100%	-	7/17/23 - 1/17/24	Camera
R12	0.5	-	-	-	99%	99%	-	7/17/23 - 1/17/24	Camera
R13	0	-	-	-	100%	100%	-	7/17/23 - 1/17/24	Camera
R14	0	-	-	-	100%	100%	-	7/17/23 - 1/17/24	Camera
R15	5.6	1.6	4	-	99%	99%	-	7/17/23 - 1/17/24	Camera/Bike
R16	0	-	-	-	100%	100%	-	7/17/23 - 1/17/24	Camera
R17	0	-	-	-	100%	100%	-	7/17/23 - 1/17/24	Camera
R19	3.6	3.1	0.5	-	99%	99%	-	7/17/23 - 1/17/24	Camera
R20	0	-	-	-	100%	100%	-	7/17/23 - 1/17/24	Camera
Bay Trail - Albany	5,085	1,754	3,331	-	-	-	-	1/18/21-5/17/22	Eco-Counter
IHT - Treat Boulevard	9,579	7,025	2,554	-	-	-	-	7/17/23 - 1/17/24	Eco-Counter
Tilden Nature Area	1,519	-	-	-	-	-	-	7/17/23 - 1/17/24	Placer AI
Skyline Gate - Redwood	4,811	-	-	-	-	-	-	7/17/23 - 1/17/24	Placer AI

Table 4: Briones Pilot Project Trail Counts and Compliance

Park	Total Hours	Incidences	Citations Issued	Date
Briones	262	94	99	4/1/23 – 11/1/24

Table 5: Public Safety Efforts during the Pilot Project



## Goal # 5: Collect Qualitative Data in Relation to Management Objectives

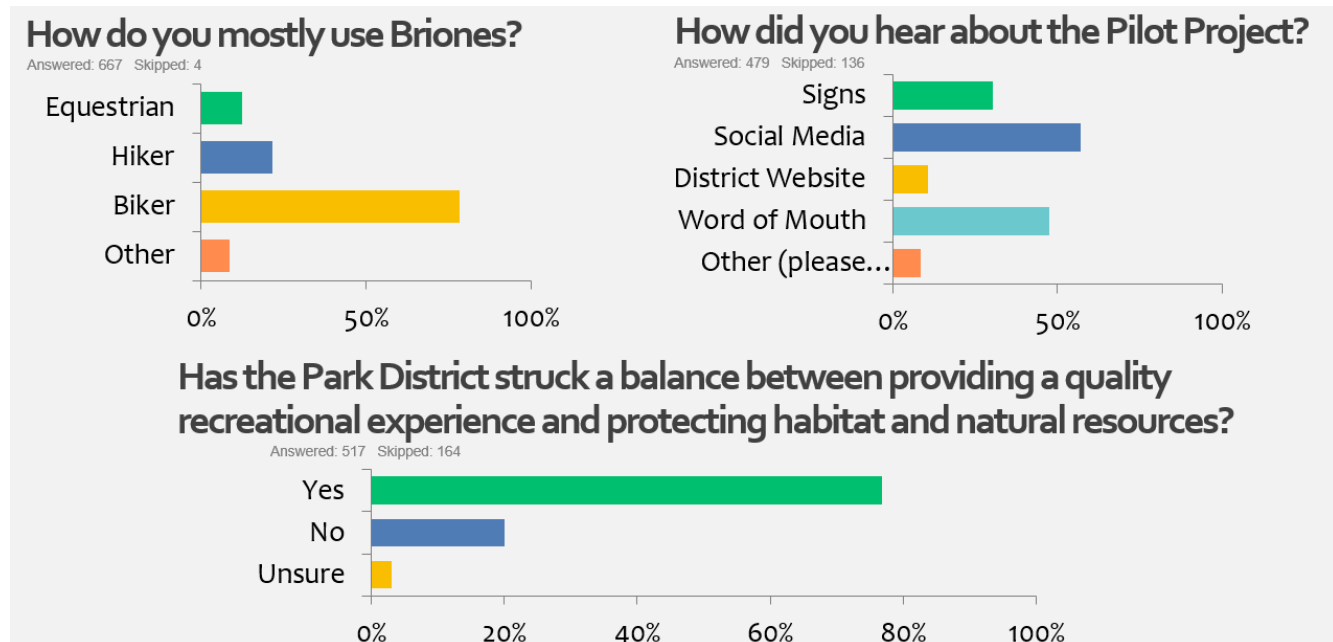


Figure 5: Survey Responses from Summer 2023 Survey

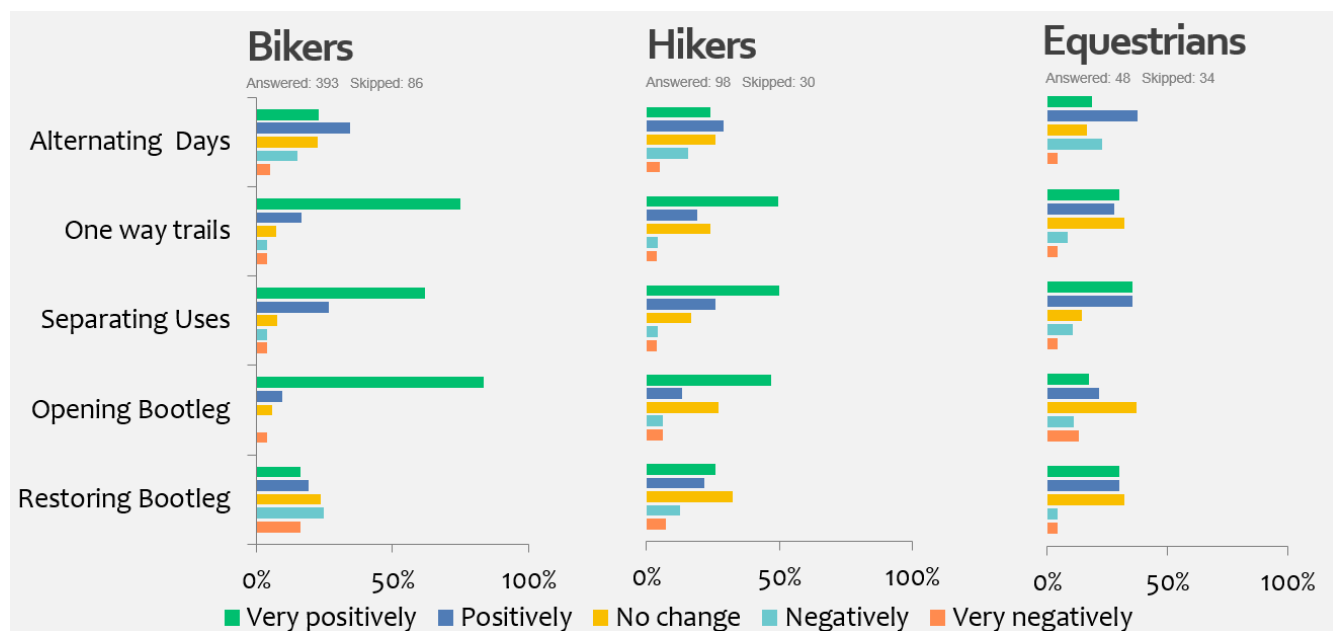


Figure 6: Survey Responses from question in 2023 Summer Survey: How have the management strategies impacted recreational experience in Briones?



1. What are your thoughts on the first year of the pilot? How has your experience changed in Briones Regional Park since the Pilot Project started in April 2023?	Positive	Negative
	<b>185</b>	<b>13</b>
	93%	7%

2. How effective have the management strategies been at improving trail user conflict in the Pilot Project Zone? (Strategies include: Alternative days, Opening bootlegs, Closing/Restoring bootlegs, One-way trails, Separating Users)	Close Bootlegs	Open Bootlegs	One Way Trails	Separate User Trails	Alternative Days	
					Against	For
	<b>175</b>	<b>186</b>	<b>195</b>	<b>197</b>	<b>88</b>	<b>112</b>
	88%	93%	98%	99%	44%	56%

3. How would you like to see the management of Briones Regional Park proceed following the conclusion of the Pilot Project?	Adopt Pilot	Remove Pilot
	<b>153</b>	<b>45</b>
	77%	23%

Figure 7: Responses from Summer 2024 Survey (n = 199)

### Goal # 6: Obtain Trail Use Data

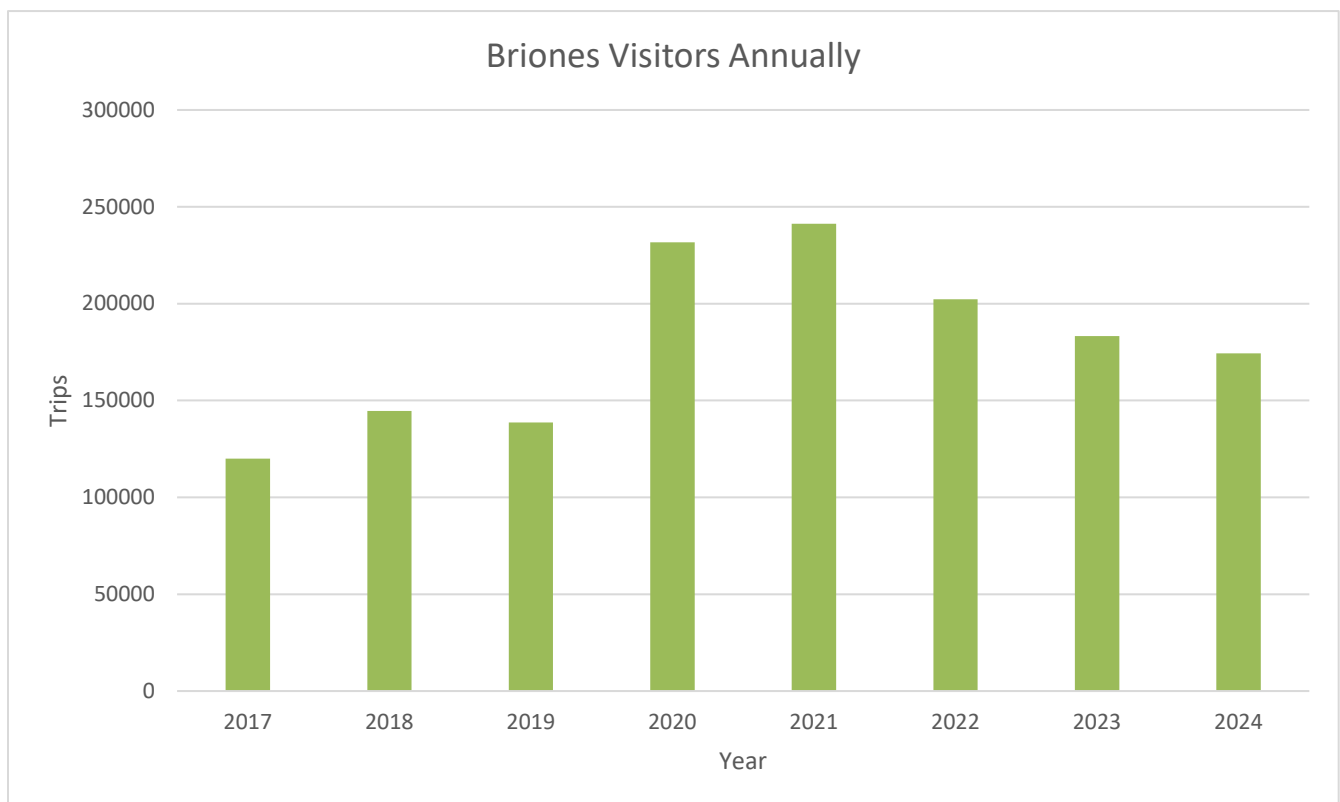


Figure 8: Briones Visitors Annually (Placer AI)

Distribution of Trips in Pilot Project Zone by User Type (April '23 - Nov '24)

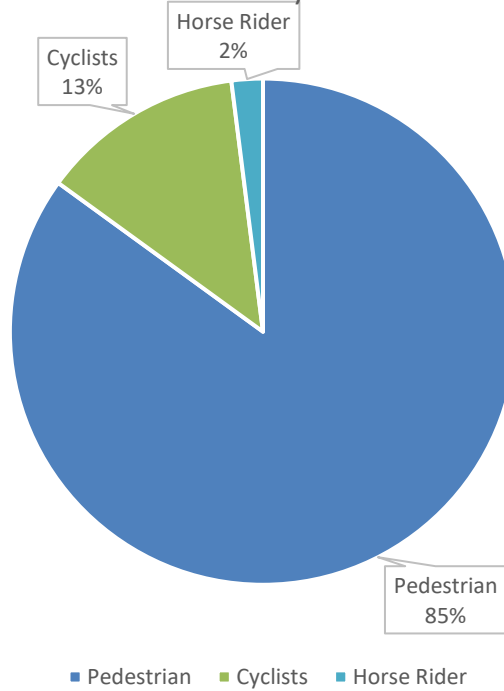


Figure 9: Distribution of Trips in Pilot Project Zone by User Type (April '23 - Nov '24)

Distribution of Trips in Pilot Project Zone Staging Area (April '23 - Nov '24)

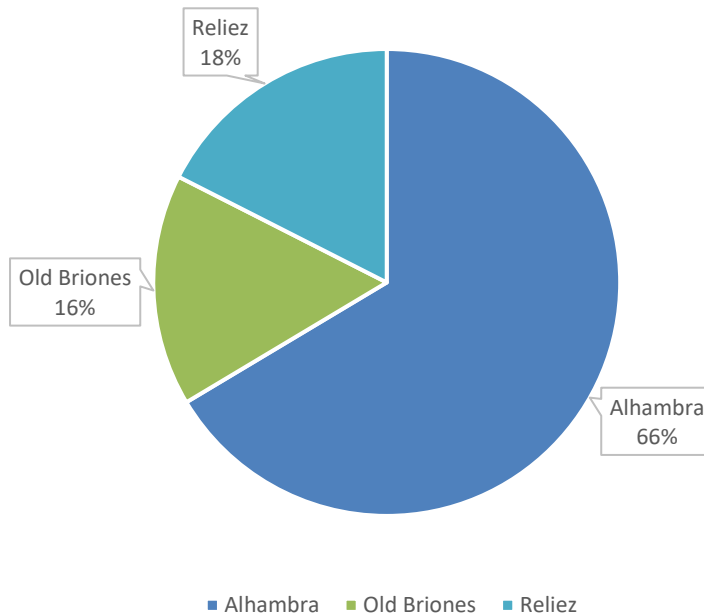


Figure 10: Distribution of Trips in Pilot Project Zone Staging Area (April '23 - Nov '24)