

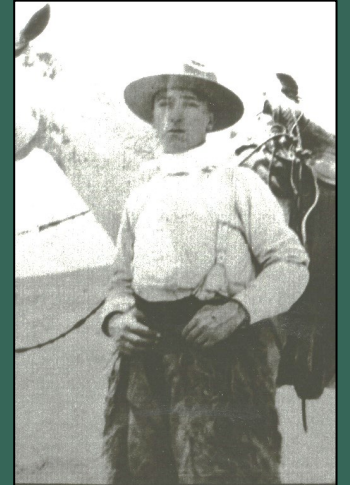
# OVERVIEW OF THE CULTURAL RESOURCES UNIT

**NATURAL AND CULTURAL RESOURCES COMMITTEE**

**FEBRUARY 25, 2025**



Brian Holt, Division Lead, Planning, Trails, Cultural Resources, GIS  
Annamarie Guerrero, Principal Planner, Cultural Resources Unit  
Alvin Rosa-Figueroa, Cultural Resources Coordinator



# CULTURAL SERVICES COORDINATOR



- 2013 Master Plan “high priority issue”:
  - “Creating conservation and management standards for cultural and historic resources”
- Position established in 2013
  - Previously held by Dr. Beverly Ortiz
  - Reorganized position from Operations to Acquisition Stewardship and Development > Planning and GIS Department

# CULTURAL RESOURCES UNIT

## 2013 Master Plan



- **CRMI:** The District will manage, conserve, and when practical restore parkland cultural and historic resources and sites; to preserve the heritage of the people who occupied this land before the District was established; and continue to encourage the cultural traditions associated with the land today.
- **CRM2:** The District may acquire Cultural and Historic resources sites when they are within lands that meet parkland acquisition criteria and will maintain an active archive of its institutional history and the history of its parklands and trails.
- **CRM3:** The District will maintain a current map and written inventory of all cultural features and sites found on parkland, and will preserve and protect these cultural features and sites “in situ” in accordance with Board policy. The District will evaluate significant cultural and historic sites to determine if they should be nominated for State Historic Landmark status or for the National Register of Historic Places.



# CULTURAL RESOURCES UNIT

## 2013 Master Plan



- **CRM4:** The District will determine the level of public access to cultural and historic resources using procedures and practices adopted by the Board of Directors. The District will employ generally accepted best management practices to minimize the impact of public use and access on these resources, and to appropriately interpret the significance of these resources on a regional scale.
- **CRM5:** the District will notify Native Americans and other culturally associated peoples in a timely manner of plans which may affect site and landscapes significant to their culture and will include them in discussions regarding the preservation and land use planning of culturally significant sites and landscapes.
- **CRM6:** The District will accommodate requests by Native Americans, ranching or farming communities and other groups to help maintain and use cultural sites and to play an active role in their preservation and interpretation.

# CULTURAL RESOURCES UNIT

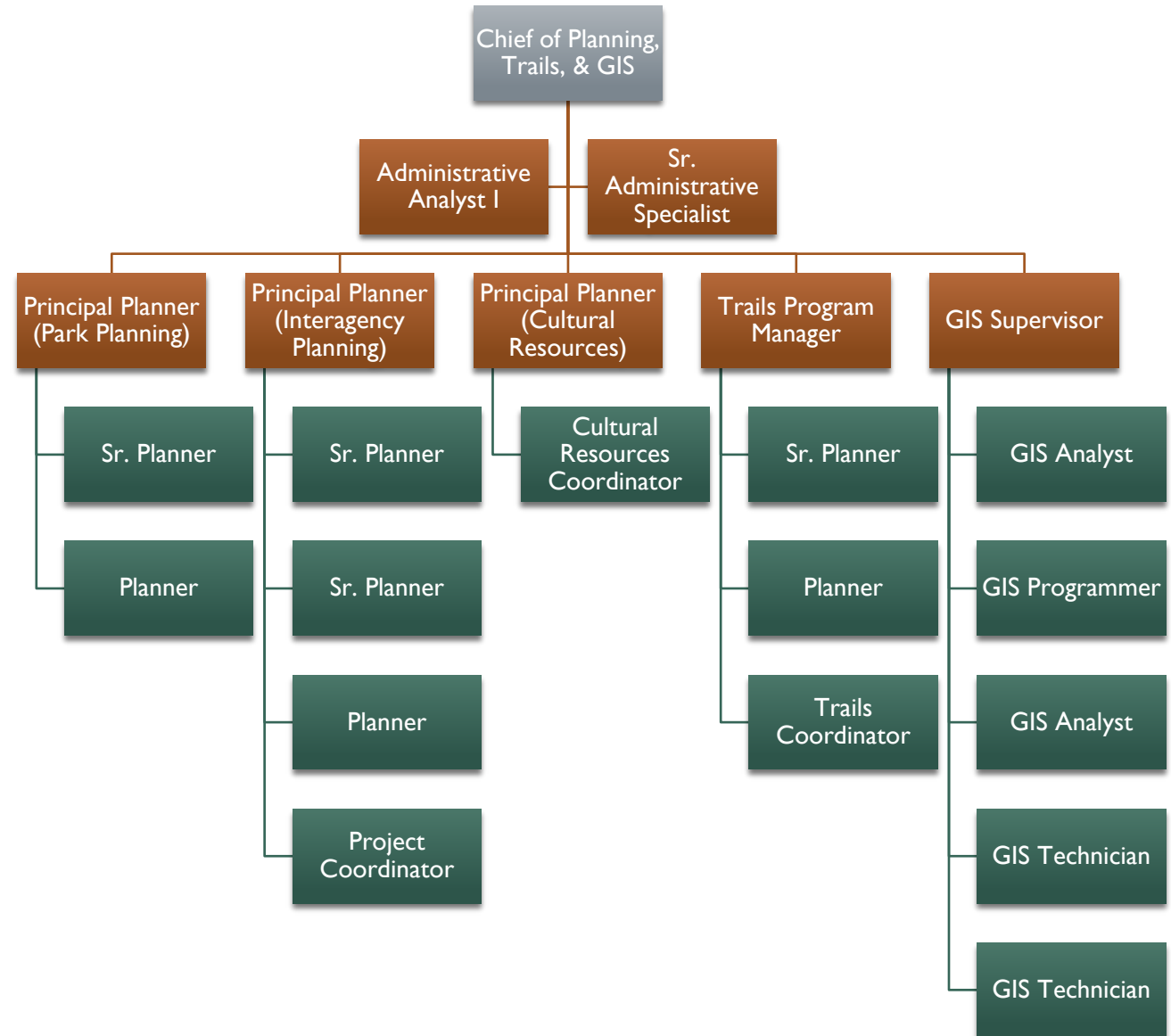
## The District Plan



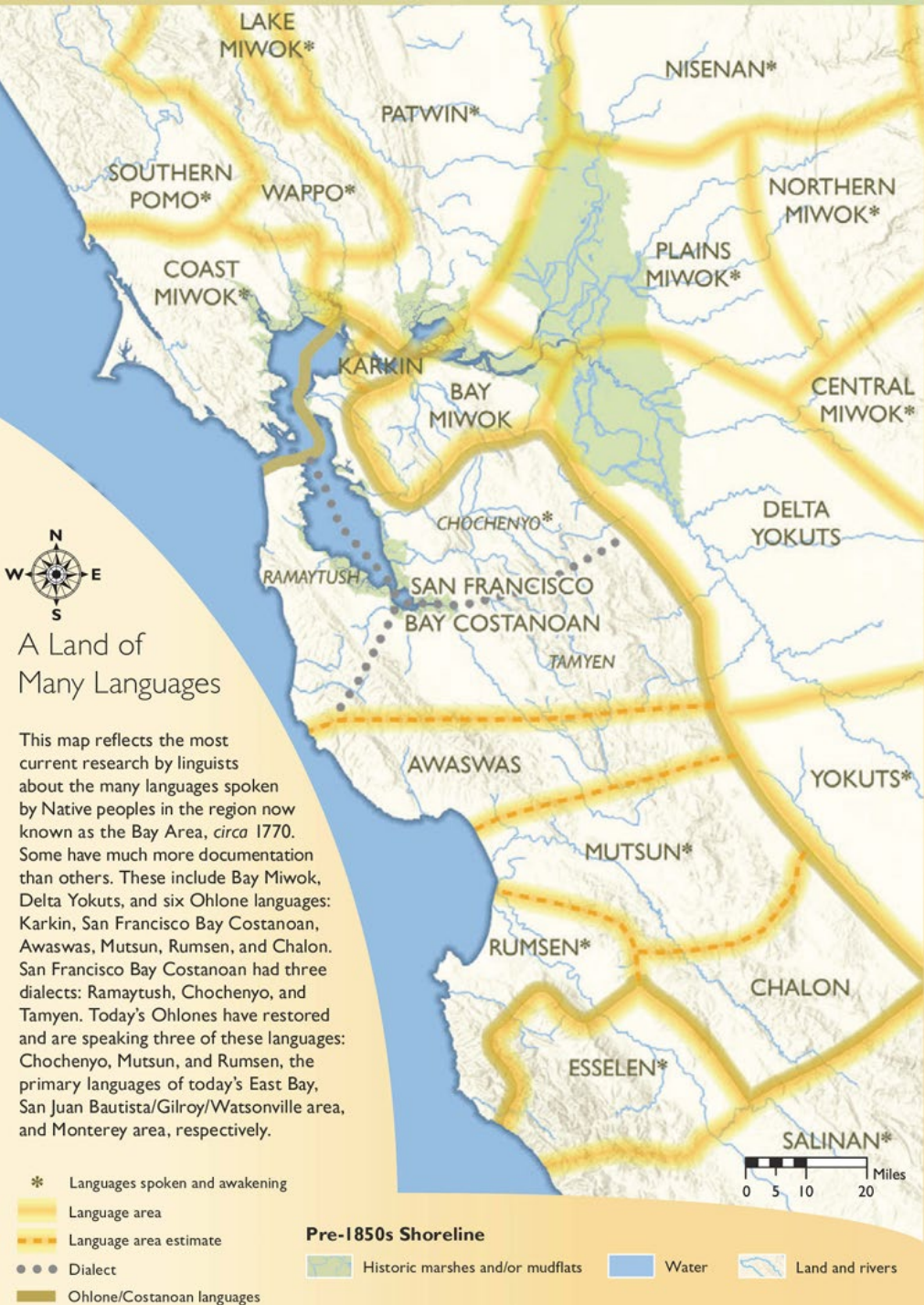
- Tribal Engagement
- Updating Cultural Resources Management Policies / framework

# CULTURAL RESOURCES UNIT

- Unit Within Planning, Trails, and GIS Department
- Principal Planner – Cultural Resources Unit Lead
  - Cultural Resources Coordinator



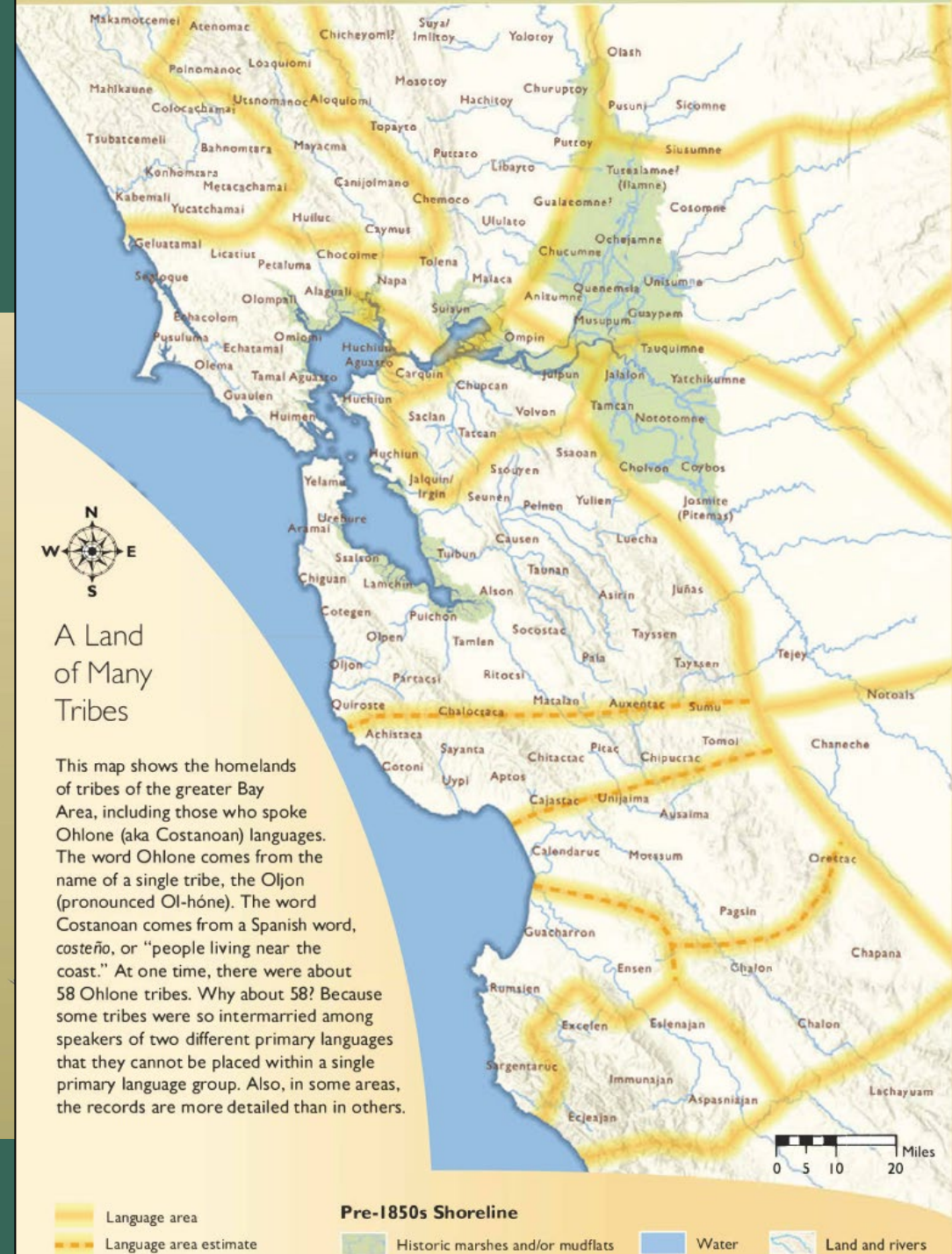




# Native Peoples of the East Bay

## PAST TO PRESENT

East Bay  
Regional Park District  
Healthy Parks Healthy People



# CULTURAL RESOURCES UNIT

## Resources

### Websites

Native American Heritage Commission: <https://nahc.ca.gov/>  
Society for California Archaeology: <https://www.scahome.org/>  
Register of Professional Archaeologist: <https://rpanet.org/>  
Society for Historical Archaeology: <https://sha.org/>  
Society for American Archaeology: <https://saa.org/>  
California Office of Historic Preservation: <https://ohp.parks.ca.gov/>  
California Register of Historical Resources: [https://ohp.parks.ca.gov/?page\\_id=21238](https://ohp.parks.ca.gov/?page_id=21238)  
National Register of Historic Places:  
<https://www.nps.gov/subjects/nationalregister/index.htm>  
Café Ohlone: <https://www.makamham.com/cafeohlone>  
Confederated Villages of Lisjan Nation: <https://villagesoflisjan.org/>  
Muwekma Tribe of the SF Bay Area: <https://www.muwekma.org/>

### Publications

- California Prehistory: Colonization, culture, and complexity (Jones and Klar 2010)
- Narratives of Persistence Indigenous Negotiations of Colonialism in Alta and Baja California (Panich 202)
- Archaeologies of Indigenous Presence (Schneider and Panich 2023)
- California Archaeology (Moratto 1984)
- We Are the Land: A History of Native California (Akins and Bauer 2021)
- From Rancho To Reservoir: History and Archaeology of the Los Vaqueros Watershed, California (Ziesing 1997)



# CULTURAL RESOURCES UNIT

## What does the Cultural Resources Unit Do?

### Identify potential resources

- Buildings, structures, sites, objects, artifacts
- Older than 45 years old

### Recommend treatments

- How to avoid / minimize / mitigate impacts

### Consultation

- Tribes
- Descendant communities



Lake Temescal Beach House

# CULTURAL RESOURCES UNIT

## Departmental Support / Crossover

### Department Support

- Planning
- Stewardship
- Design and Construction
- Operations
- Interpretation & Recreation
- Archives
- Fire Department
- Public Safety



Ferry Point Pier Removal, Cross-Departmental Coordination



# CULTURAL RESOURCES UNIT

## Program Support

- Routine Maintenance Projects
- Fuels Work
- Grants
  - Land Water Conservation Fund Grants
  - FEMA grants
  - Coastal Conservancy Grants



ca. 1935 photo of WPA workers clearing the land within Tilden Park (Park District Archives)



Overview of one example of ca. 1930 stonework (headwall) in Tilden resulting from Works Progress Administration/Civilian Conservation Corps work in Tilden. This type of stone culvert has been identified for Routine Maintenance (culvert) repairs and during Fuels work in Tilden.



# CULTURAL RESOURCES UNIT

## Program Support

### External Access Review

- Research permits
- Easement Requests
- Temporary Parks Access Permits
- Long term access requests via Land Department



Pipeline access (easement)



Student researchers



# CULTURAL RESOURCES UNIT

## Tribal Consultation

- Legally required consultation
  - Assembly Bill 52 (CEQA)
  - Section 106 (Federal)
- Non-regulatory projects
- Tribal access to park land
  - Resource gathering
  - Ceremony/Ancstral land use
  - Free Parking Passes
- Interpretation and Recreation
  - (Programs/Events)



Tribal and archaeological monitoring at Vasco

# CULTURAL RESOURCES UNIT

## Indigenous Resources Work Plan

- Big Break
- Vasco
- Brushy Peak

### Challenges

- Uncontrolled access
  - Vandalism
  - Looting
  - Increase erosion/damage
  - Unofficial trails
- Impacts of Climate Change
  - Coastal Erosion
  - Increased Wave Action
  - Droughts
  - Wildfire
  - Wind erosion

### Opportunities

- Increased tribal consultation/engagement/involvement
- Protection from Climate Change
  - Mutually beneficial projects
- Bringing back original land practices
- Overall better land management
- Preserve Sacred Sites

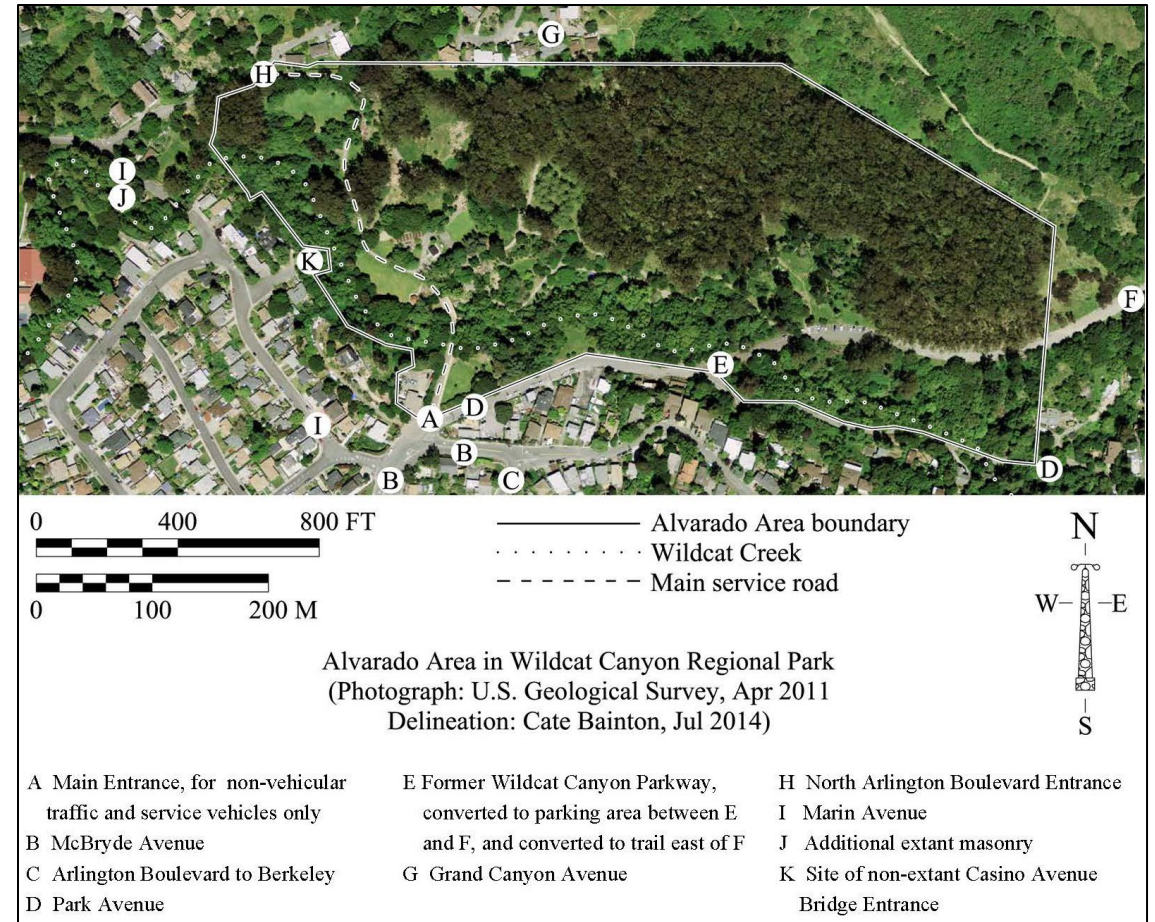




# CULTURAL RESOURCES UNIT

## “Historics” Work Plan

- Historic-age Buildings/Structures throughout each Ward
- Evaluations
- Maintenance / Treatment / Management Plans – assist Park Operations staff with treating historic buildings/structures (prevents further decay)
- Developing Historical Contexts throughout each Ward
  - Agricultural history
  - Logging
  - Conversion to Park lands / green space
  - Mining themes
  - CCC/WPA work



Historic American Building Survey – boundary of National Register District for Alvarado Park

# CULTURAL RESOURCES UNIT

Thank You