



# BOREL AGRICULTURAL PARK: PLANNING SERVICES CONTRACT

July 16, 2024 | Board Presentation

Presented by Drake Hebert – Senior Planner





# RECOMMENDATION

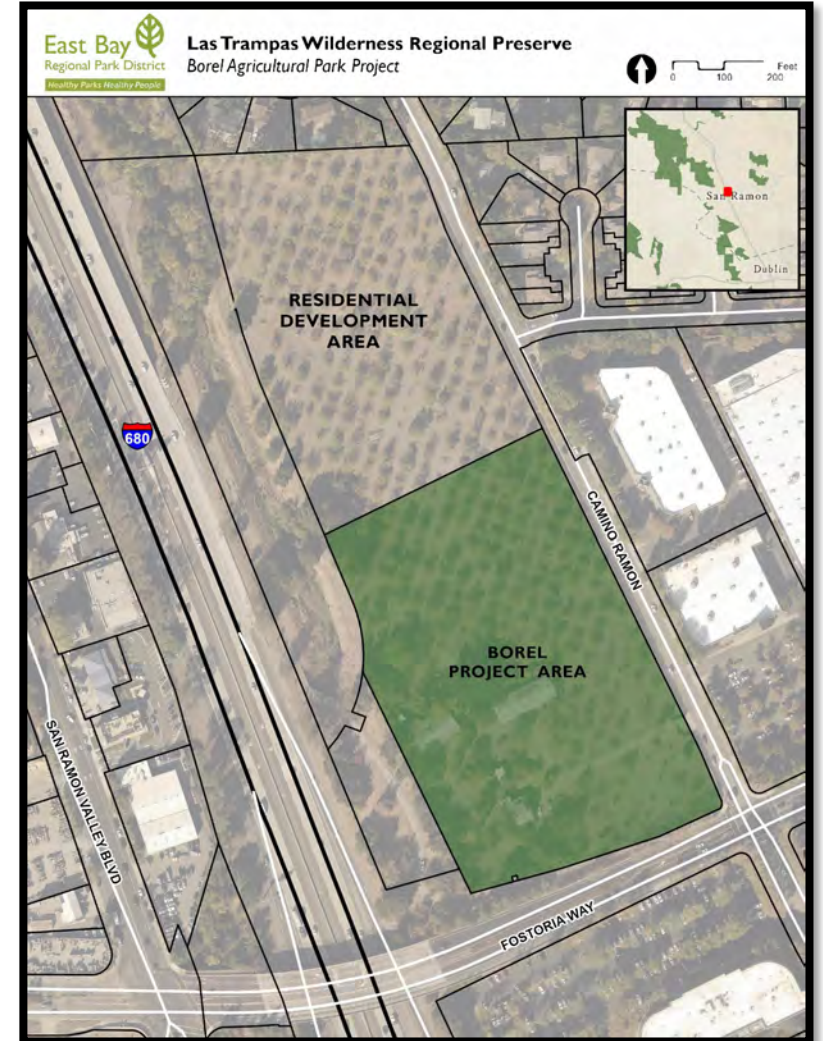
Award a \$565,000  
Consultant Contract to  
Placeworks, Inc. and  
Appropriate \$615,000 for  
the Borel Agricultural  
Park Project: Las Trampas  
Wilderness Regional  
Preserve





# BOREL PROPERTY BACKGROUND

- 17 Acre property with one of the East Bay's last remaining Walnut Orchards
- Property bequeathed to the Park District in 2008 by Armond Borel on the condition it be developed into an Agricultural Park
- A Settlement Agreement obligated the sale of the northern 7 acres of the property to housing developers.





# EXISTING CONDITIONS

- Buildings
  - Borel Residence
  - Car Barn
  - Walnut Barn
  - San Ramon Train Station
- Walnut Orchard
- Farm Equipment and Artifacts





# RFP FOR PLANNING SUPPORT

- Feasibility Studies
- Technical Reports
- Community Engagement
- Schematic Design Options
- CEQA Documentation





# REQUEST FOR PROPOSALS

- 4 firms submitted proposals
- 2 Interviewed by staff
- Placeworks Inc. chosen as most qualified firm.
  - Contract Not to Exceed \$565,000





## RECOMMENDATION

Award a \$565,000  
Consultant Contract to  
Placeworks, Inc. and  
Appropriate \$615,000 for  
the Borel Agricultural  
Park Project: Las Trampas  
Wilderness Regional  
Preserve





A photograph of a rural scene. On the left, a large, leafy green tree stands next to a building with corrugated metal siding. In the center, a vintage tractor is parked on a gravel path. The background is filled with more trees and a blue sky with white clouds. A semi-transparent dark grey rectangular box is overlaid across the middle of the image, containing the text "THANK YOU" in white capital letters.

THANK YOU

