

# 30x30 CALIFORNIA

Board of Directors Meeting  
November 15, 2022

Dr. Ana M. Alvarez, Deputy General Manager  
[aalvarez@ebparks.org](mailto:aalvarez@ebparks.org)

# Global Movement

Global conservation movement to protect 30% of the Earth's lands and waters by 2030

- 72 countries = survival of species
- Urgency to "keep up" with environmental challenges due to the loss of the natural world and its life supporting systems
- Movement against time to protect natural areas and natural resources



Vasco Caves  
Regional Preserve

# Federal Action

- President Biden signed Executive Order 14008 on January 27, 2021 addressing the climate and extinction crisis
- Calls on the protection of 30% of the U.S. lands and waters by 2030
- Brings together multiple policy issues areas including public health, food supplies, biodiversity and equity.
- Conserving & Restoring America the Beautiful Principles for Locally Led Effort:
  1. Collaboration & Inclusive Approach
  2. For the Benefit of All People (equity)
  3. Locally Led and Designed Conservation Efforts
  4. Honor Tribal Sovereignty and Support Tribal Nations
  5. Job Creation & Support Healthy Communities
  6. Support Voluntary Stewardship Efforts of Private Landowners and Fishers
  7. Use of Science as a Guide
  8. Develop Strategies for Flexible and Adaptive Approaches





# East Bay Regional Park District Partnership



Discussion on Climate Change  
with Vice President Kamala Harris  
October 2022

In October 2020, Governor Newsom issued the Nature-Based Solutions Executive Order N-8220, advancing biodiversity conservation as an administration priority and elevating the role of nature in the fight against climate change. As part of this Executive Order, California committed to the goal of conserving 30% of our lands and coastal waters by 2030 (30x30).

Bay Point Regional Shoreline

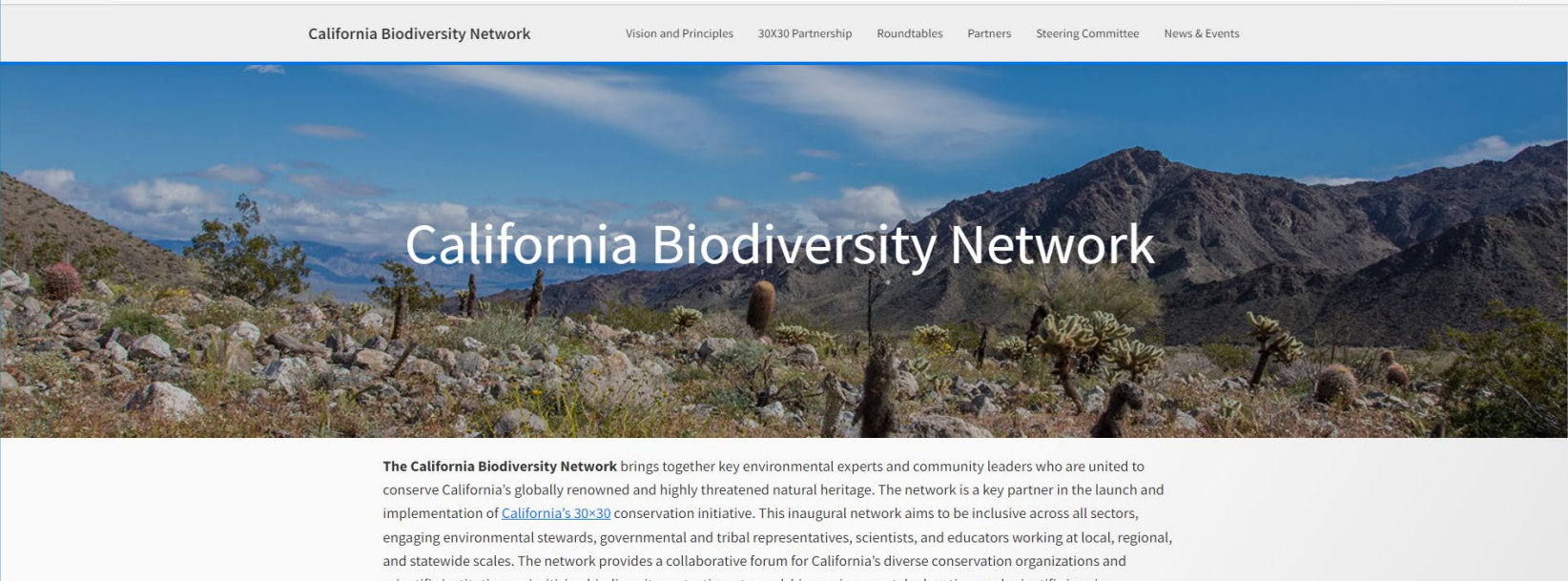
**30x30**  
CALIFORNIA

East Bay  
Regional Park District





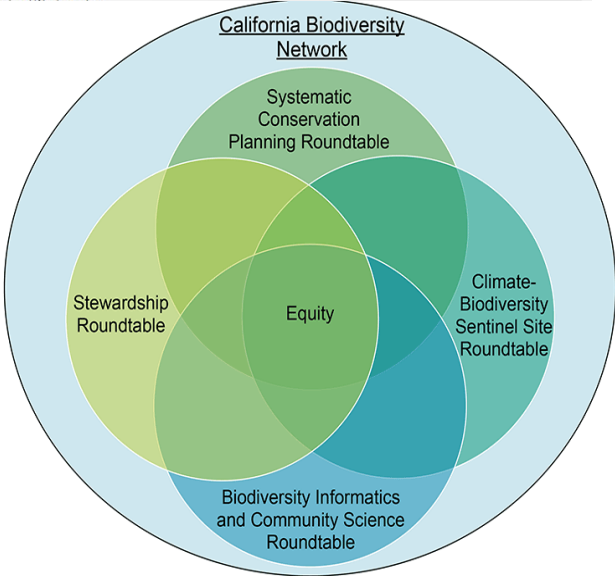
# East Bay Regional Park District Partnership 2021-2022



**Berkeley Rausser**  
College of Natural Resources



California Department of  
**Fish and Wildlife**



- CNRA Public meetings and workshops
- California Biodiversity Network partnership
- Development of 30x30 Pathways Appendix D



# 30x30 Equity Forum on Research Gaps



Dr. Ana M. Alvarez,  
CBN Steering Committee |  
[East Bay Regional Park District](#)



Jonathan Jarvis,  
CBN Steering Committee |  
University of California Berkeley  
[Institute for Parks, People and Biodiversity](#)



Effie Turnbull Sanders,  
University of Southern California |  
[California Coastal Commission](#)



50 organizations contributed and participated in the forum

Thursday February 17, 2022, at 10:00 a.m. – 11:30 a.m.

**Hosted By:** [California Biodiversity Network](#) Steering Committee in  
Partnership with [Point Blue Conservation Science](#)





# Thematic Focus Areas

## Open Forum

*general discussion on other topical areas as defined by the participants*

## Life Expectancy

*mental and physical health impacts from limited or no access to parks and open space that results in diminished life expectancy*

## Loss of Land & Control

*restitution from historical practices of displacement, redlining and forced removal*

## Green Gentrification & Displacement

*displacement from park development and ecological restoration of open spaces*





# 30x30 Conservation Framework

- I. Protect and restore biodiversity
- II. Improve equitable access to nature for all and reflect the needs and interests of local communities
- III. Mitigate and build resilience to climate change through climate-smart land management



Garin/Dry Creek Pioneer  
Regional Parks

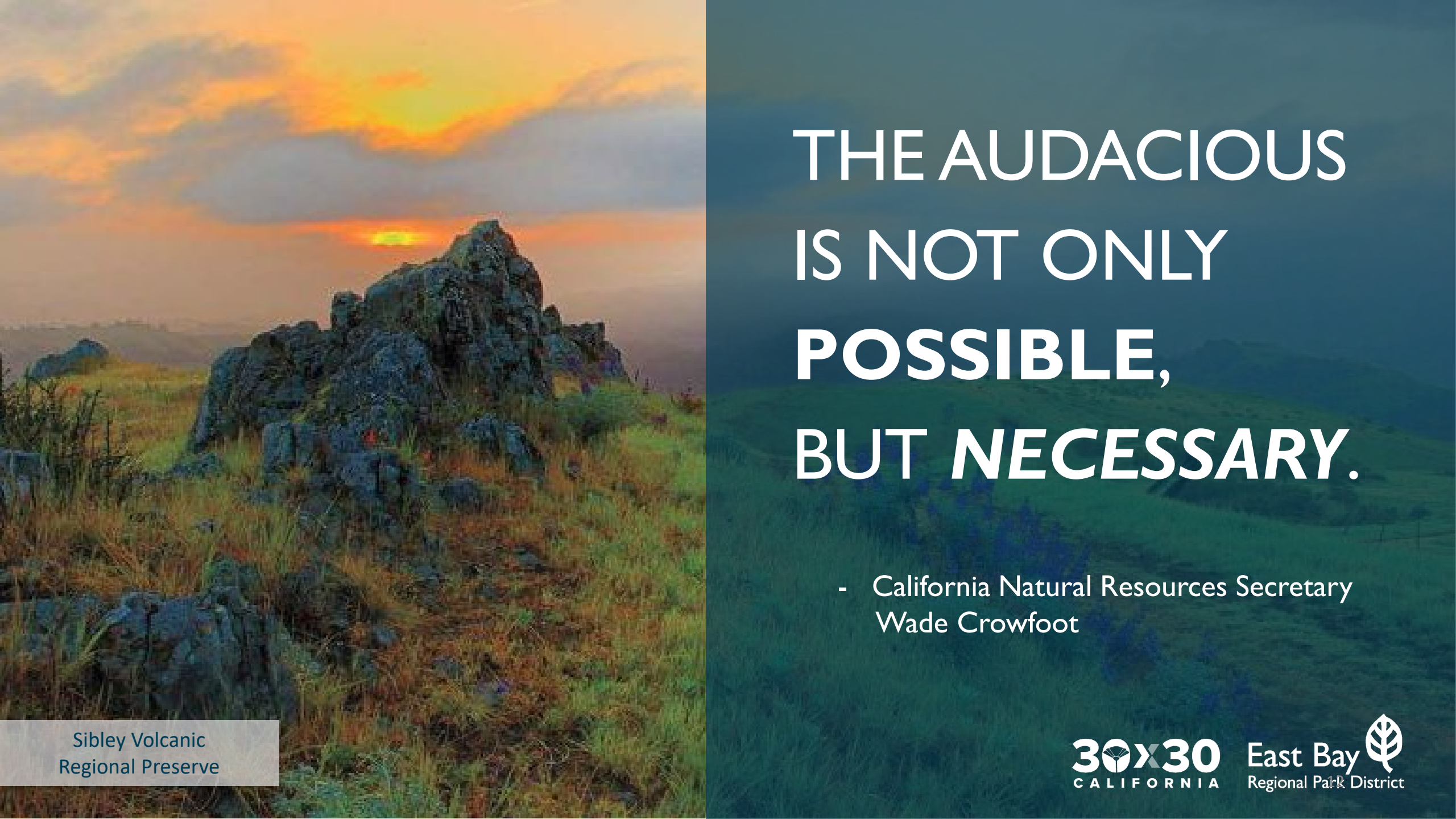
# Pathways to 30x30

1. Accelerate Regionally Led Conservation
2. Execute Strategic Land Acquisitions
3. Increase Voluntary Conservation Easements
4. Enhance Conservation of Existing Public Lands and Coastal Waters
5. Institutionalize Advance Mitigation
6. Expand and Accelerate Environmental Restoration and Stewardship
7. Strengthen Coordination Among Governments
8. Align Investments to Maximize Conservation Benefits
9. Advance and Promote Complementary Conservation Measures
10. Evaluate Conservation Outcomes and Adaptively Manage



# East Bay Regional Park District Partnership





# THE AUDACIOUS IS NOT ONLY **POSSIBLE,** BUT *NECESSARY.*

- California Natural Resources Secretary  
Wade Crowfoot

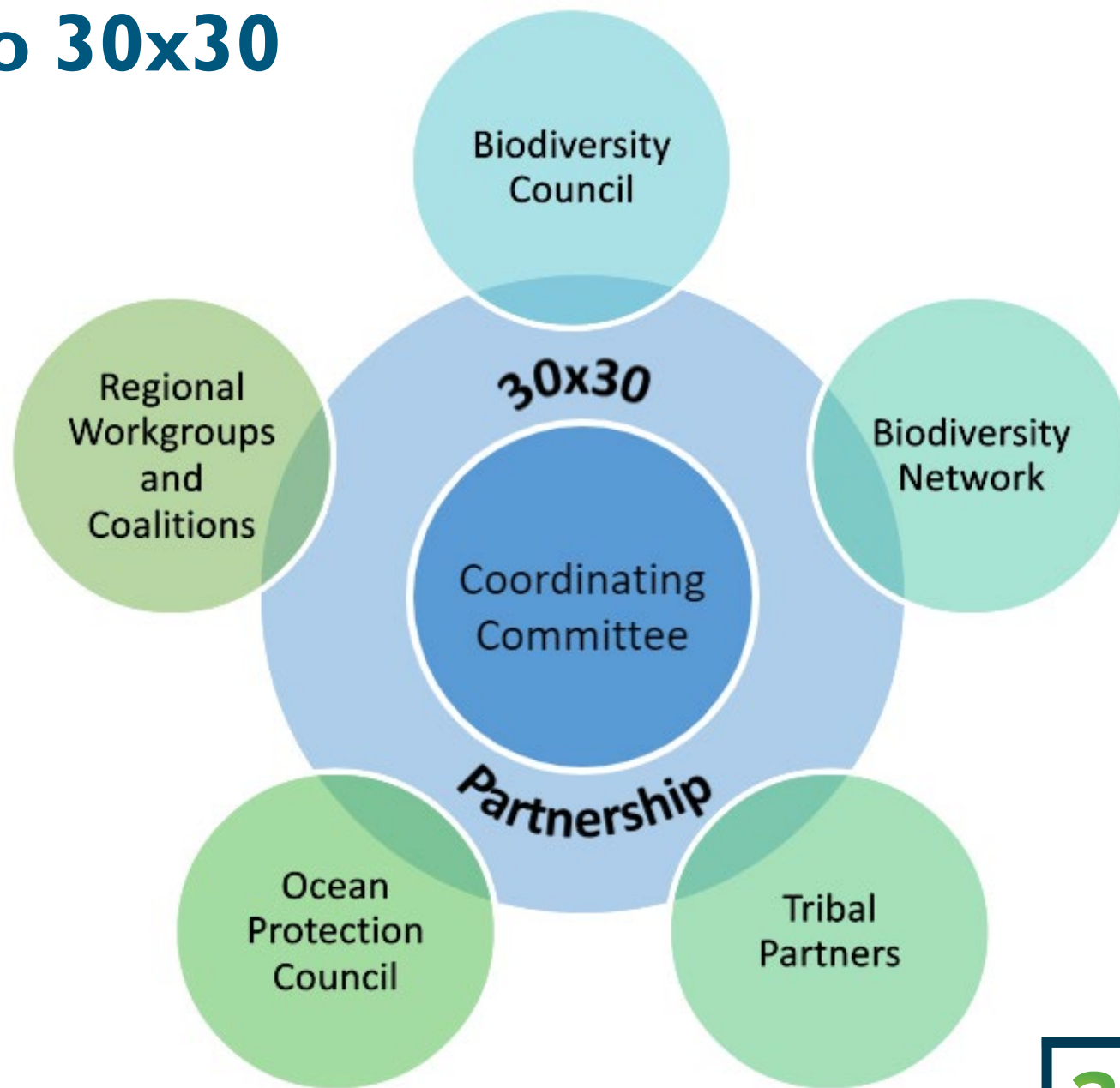
Sibley Volcanic  
Regional Preserve

**30x30**  
CALIFORNIA

East Bay  
Regional Park District 



# Pathways to 30x30





## 30x30 CONSERVATION AREAS

---

“Land and coastal water areas that are **durably** protected and managed to sustain functional ecosystems, both intact and restored, and the diversity of life that they support.”

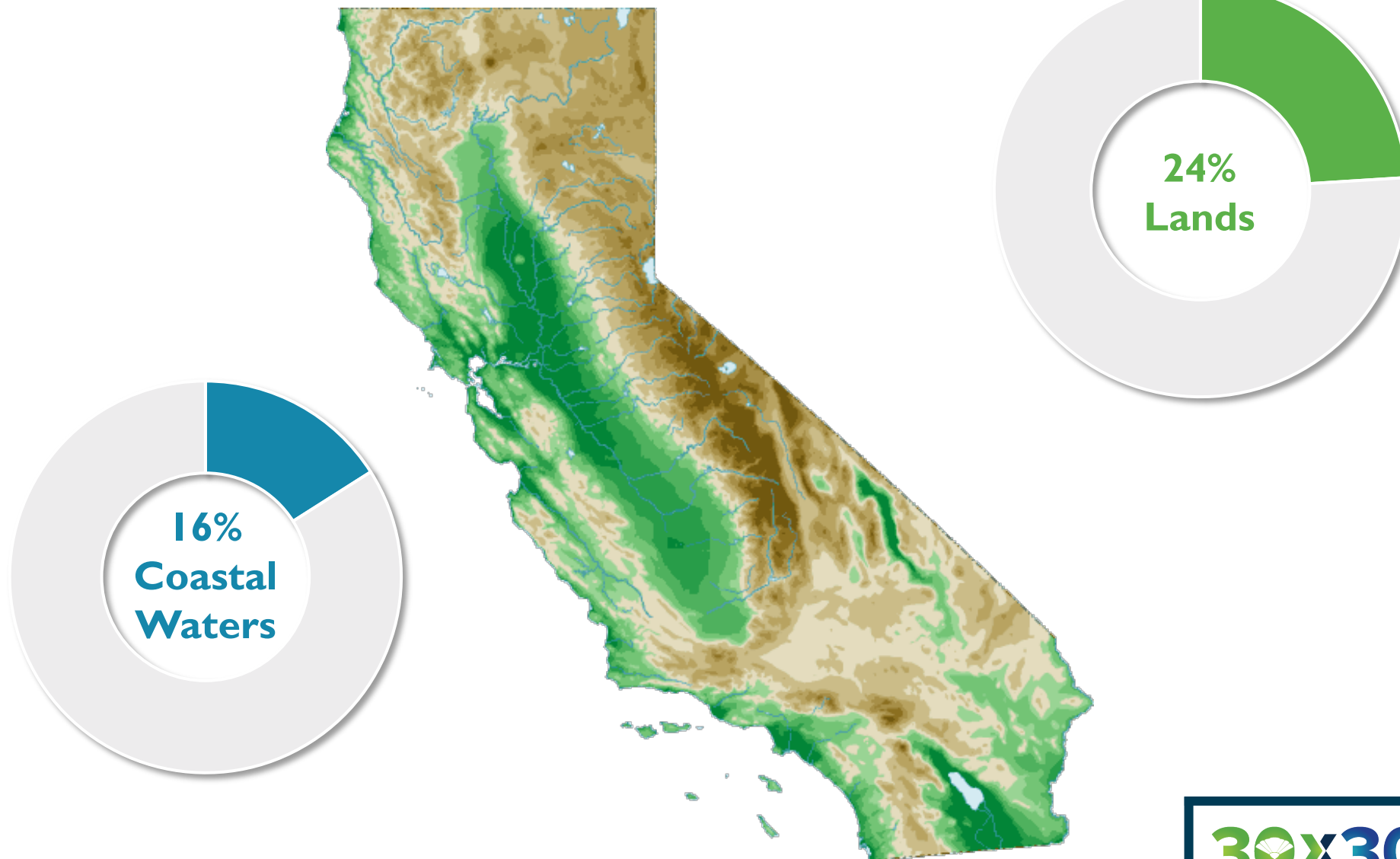
Dublin Hills Regional  
Open Space Preserve

**30x30**  
CALIFORNIA

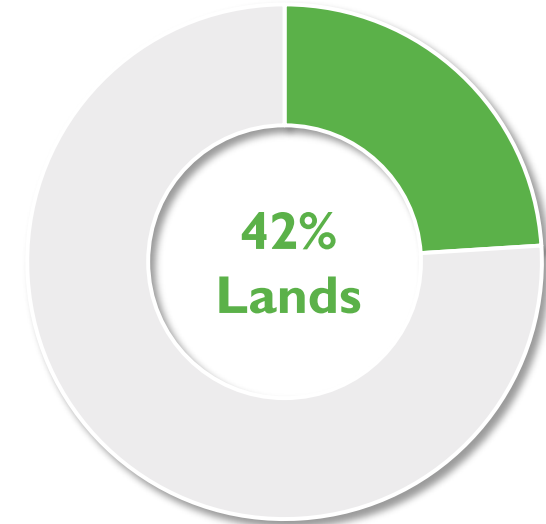
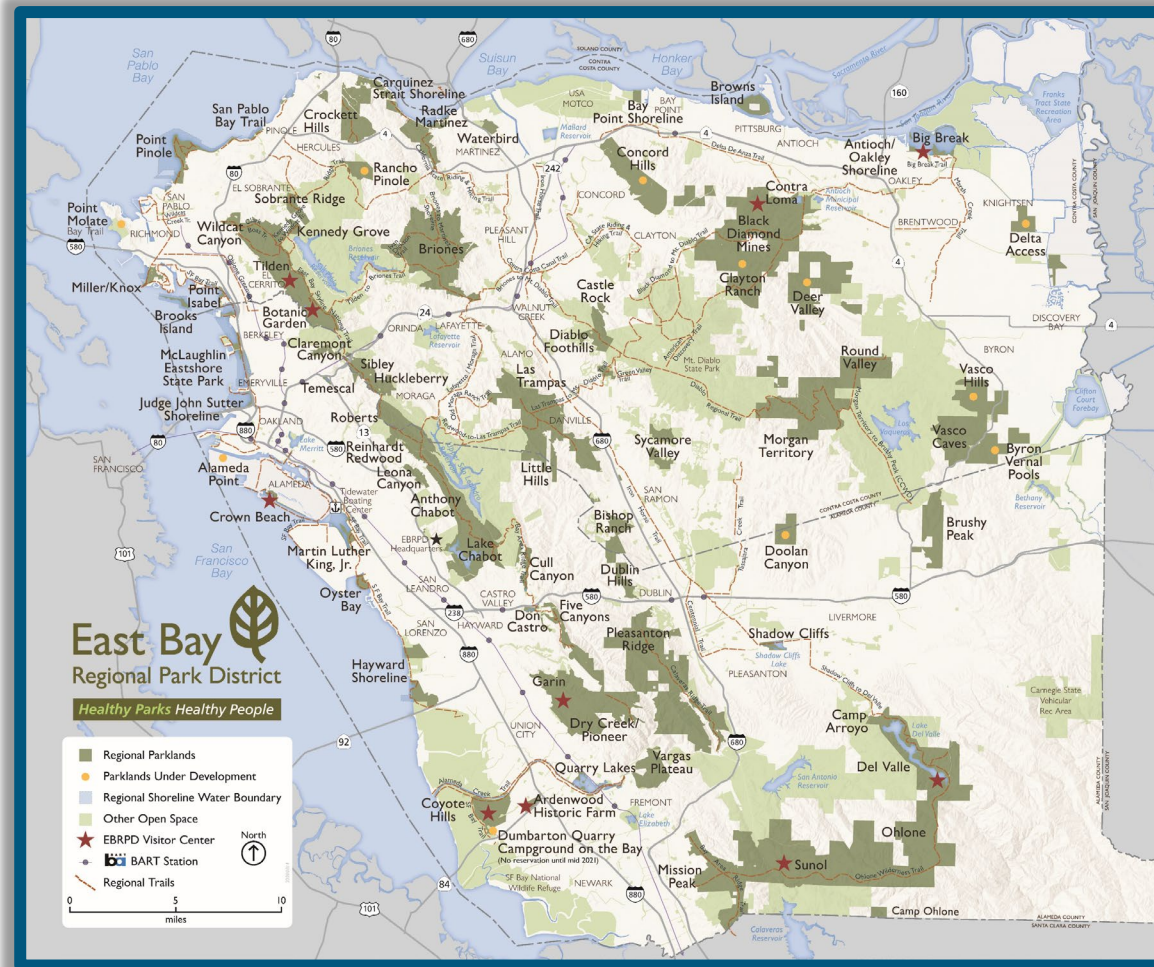
East Bay  
Regional Park District 



# Statewide Progress



# East Bay Regional Park District Lands





# East Bay Regional Park District Partnership



Secretary Crowfoot's 30x30  
Regional Convening  
April 2022





# East Bay Regional Park District Partnership



California Natural Resources Agency  
30x30 Kickoff Event  
September 2022



# East Bay Regional Park District Partnership



California Natural Resources Agency  
30x30 Kickoff Event  
September 2022



# East Bay Regional Park District Partnership



California Natural Resources Agency  
30x30 Kickoff Event  
September 2022





# Funding Opportunities

- **Ocean Protection Council ~\$230 million**
- **State Coastal Conservancy ~ \$700 million**
  - Habitat Restoration and Protection
  - Acquisition
  - Nature-based Solution for Coastal Resilience
  - Wildfire Resilience
- **Wildlife Conservation Board ~\$245 million**
  - Rangeland, Grazing and Grassland Protection
  - Forest Conservation
  - Oak Woodlands Conservation
  - California Desert Conservation
  - Climate Adaptation and Resiliency
- **Department of Fish and Wildlife**
  - Wetland Restoration ~54 million
  - Wildlife Corridors ~ \$42 million
  - Natural Community Conservation Planning and Acquisition ~\$36 million
  - Regional Conservation Investment Strategies ~ \$5 million

# 30x30 Leadership Working Group

- Cross-divisional working group with the participation of GM Office, ASD, Operations and FMS
- Integrate CA 30x30 framework and principles across divisions
- Identify inclusion pathways to tap into the creativity and talent of all Park District employees to advance 30x30 goals



Vargas Plateau  
Regional Park



# East Bay Regional Park District Partnership



East Bay Regional Park District  
30x30 Staff Lunch & Learn  
October 2022

Hosted over 85  
Park District  
staff for an  
interactive  
30x30 event on  
Oct. 26



# East Bay Regional Park District Partnership



East Bay Regional Park District  
30x30 Staff Lunch & Learn  
October 2022



# Next Steps to Go Further & Faster

- Contribute to serve on CRNA's 30x30 Partnership Planning Committee
- Focus on "Telling Our Story"
- Climate Smart Mini Grant applications open January 9, 2023
- Enhance capacity to tap into state and federal funding opportunities
- Continue expanding regional and state partnerships
- Implement projects that do no further harm or pose unintended consequences to historically marginalized communities.



Round Valley  
Regional Preserve



# Thank You